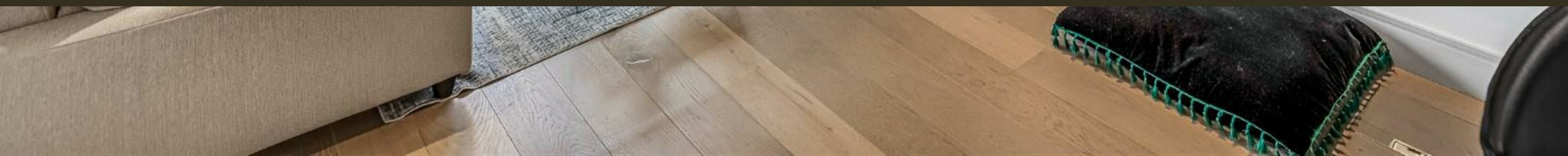




Park Street, London  
SW6

GARTON JONES.COM



Park Street, London  
, SW6

GARTON JONES.COM

11 Park Street  
Chelsea Creek  
London  
SW6 2FS

Sales +44 (0) 20 7824 7090  
paul@gartonjones.com  
www.gartonjones.com

£620 Per Week

STUNNING Manhattan apartment 416sqft (38.7sqm) which is available to rent on the 3rd floor in Doulton House SW6. The apartment offers a stylish & bright open plan living space overlooking the communal gardens, modern kitchen with integrated appliances, sliding door providing access and privacy for the bedroom area, guest bathroom. Chelsea Creek is situated in one of London's most elegant dockside developments, which combines luxurious central London living whilst overlooking tranquil waterways, tree lined avenues and landscape gardens. Residents benefit from 24 Hour Concierge, Spa and fitness suite with Swimming pool and. King's Road and Chelsea Harbour are easily accessible and Imperial Wharf Station is just a few minutes' walk.

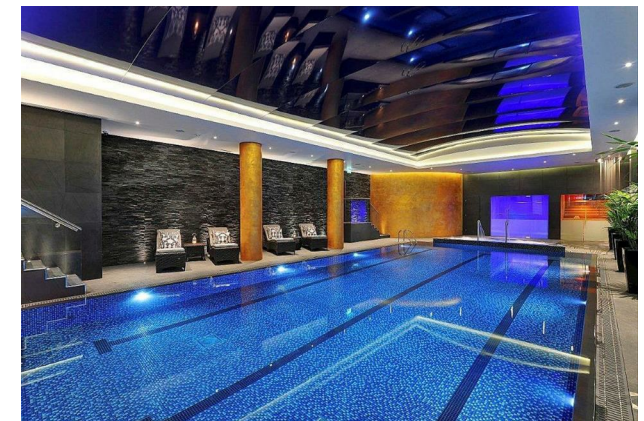
Please note furniture may differ to that shown in the current photos.

5 Weeks Security Deposit  
12 Month Tenancy  
Council Tax — London Borough of  
Hammersmith & Fulham — Band D

EPC (B) 82

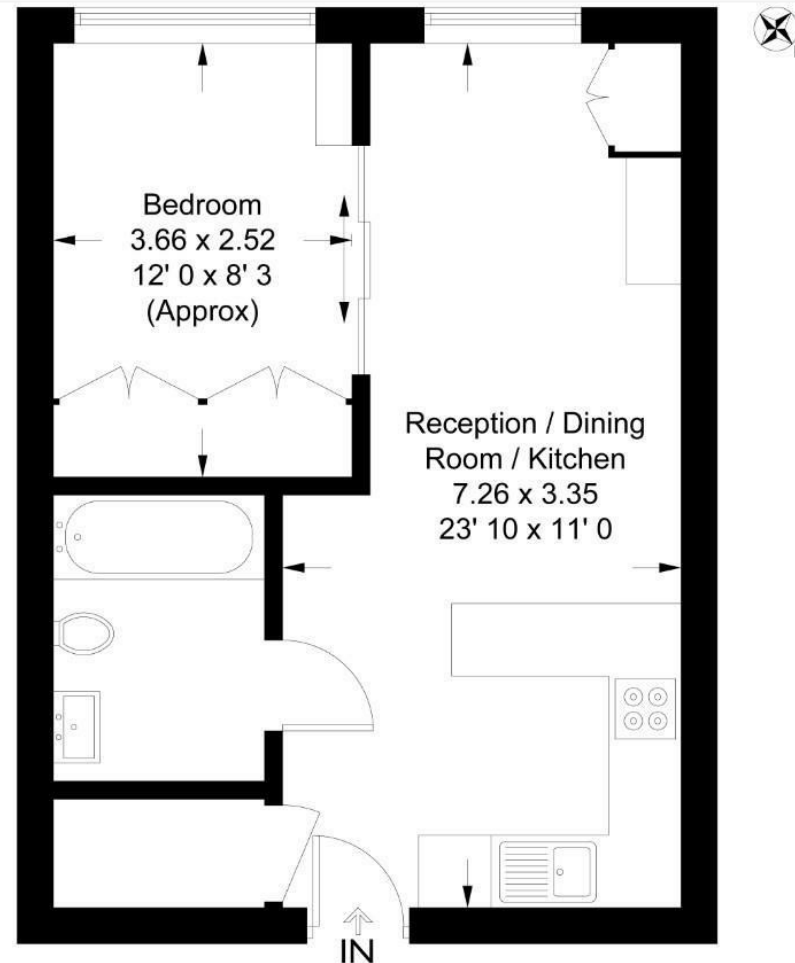
EPC certificate available on request.

- Manhattan Apartment
- 416sqft (38.7sqm)
- Furnished
- Open Plan Living Space
- Luxury Bathroom
- Modern Kitchen with Integrated Appliances
- Residents Spa — Swimming Pool & Gymnasium
- Walking Distance To Imperial Wharf Overground Station
- Available 9/5/2025
- EPC (B) 82



**Doulton House**GARTON JONES  
LONDON

Approximate Gross Internal Area = 416 sq ft / 38.7 sq m

**Third Floor**

This plan is not to scale and must be used as layout guidance only. All measurements and areas are approximate and should not be relied upon to provide accurate information. This plan must not be relied upon when making property valuations, design considerations or any other such relevant decisions. We accept no responsibility or liability (whether in contract, tort or otherwise) in relation to any loss whatsoever arising from or in connection with any use of this plan or the adequacy, accuracy or completeness of it or any information within it.





