



Goldhurst House, Hammersmith
W6

GARTON JONES.COM

Goldhurst House, Hammersmith , W6

GARTON JONES.COM

11 Park Street
Chelsea Creek
London
SW6 2FS

Sales +44 (0) 20 7824 7090
paul@gartonjones.com
www.gartonjones.com

£2,250 Per Week

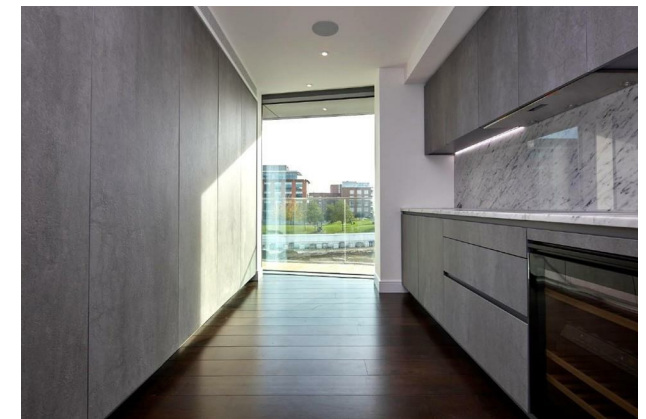
ONLINE VIDEO AVAILABLE - A sensational furnished Three-bedroom apartment circa 2200sqft (200sqm) which offers a south facing Wrap around balcony with River views, located within an award-winning development at Fulham Reach. The luxurious accommodation comprises of a generous 29ft (9m) x 25ft (7.7m) open plan lounge with access to the wrap around river facing balcony, kitchen area with built in Miele appliances. There are three stunning generous bedrooms all benefitting from their own ensuites, fitted wardrobes and the master has its own dressing area, guest cloakroom and an abundance of storage. At Fulham reach you will have access to the exclusive Tamesis Club which is a private residents' club featuring a swimming pool, sauna, steam room, treatment room, wine cellar, snooker room, screening room, virtual golf room and Wi-Fi enabled residents' lounge as well as a 24-hour concierge. Onsite you will also have access to shops, bars and restaurants including Tesco Express, Bread Lab Bakery, The Blue Boat Bar and Restaurant & Brasserie Blanc. Excellent transport links — Hammersmith Underground Station is conveniently located only around 4-minute walk from Fulham Reach, offering four London underground lines connecting you to every corner of the city.

12 Month Tenancy
6 Weeks Deposit
Council Tax — London Borough Of Hammersmith & Fulham — Band H

EPC — B (88)

EPC certificate available on request.

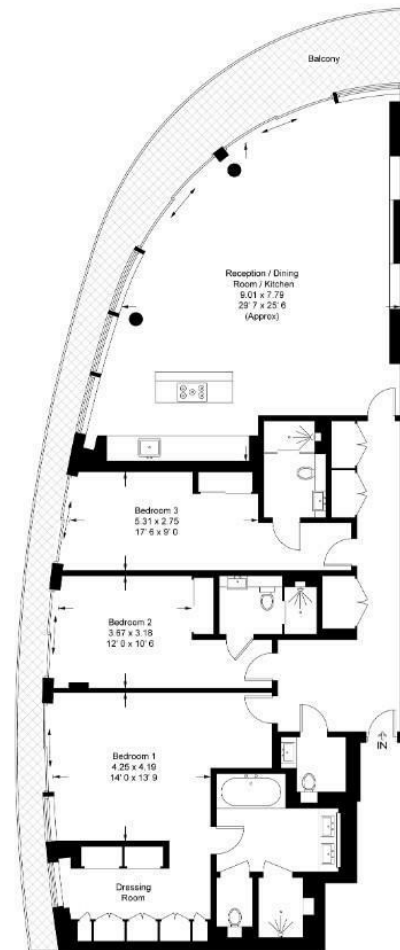
- Three Bedroom Apartment
- Three Ensuites
- Master Bedroom With Dressing Area
- 2nd Floor With Lift
- South Facing Wrap Around Balcony With River Views
- Circa 2200sqft (200sqm)
- Luxury Apartment
- Modern Kitchen Area With Built In Miele Appliances
- First Class Residents Onsite Facilities
- Swimming pool, Gym, Sauna, Spa, Cinema, Snooker Room, Wine Cellar, Virtual Golf & 24-Hour Concierge



Goldhurst House

Approximate Gross Internal Area = 2019 sq ft / 187.6 sq m

Balcony = 345 sq ft / 32.1 sq m

GARTON JONES
LONDON

This plan is not to scale and must be used as layout guidance only. All measurements and areas are approximate and should not be relied upon to provide accurate information. This plan must not be relied upon when making property valuations, design considerations or any other such relevant decisions. We accept no responsibility or liability (whether in contract, tort or otherwise) in relation to any loss whatsoever arising from or in connection with any use of this plan or the adequacy, accuracy or completeness of it or any information within it.



