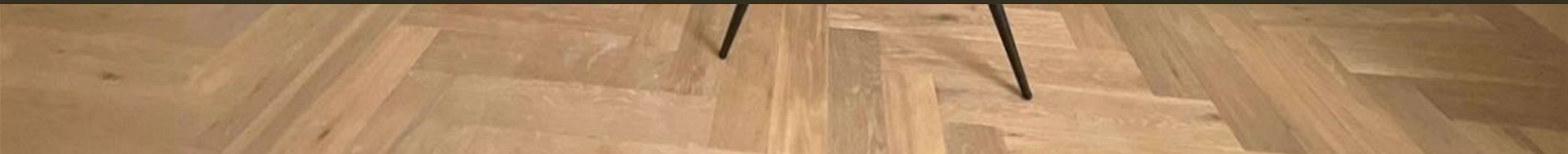




Kings Tower, Chelsea Creek  
London SW6

GARTONJONES.COM



# Kings Tower, Chelsea Creek London, SW6

GARTON JONES.COM

11 Park Street  
Chelsea Creek  
London  
SW6 2FS

Sales +44 (0) 20 7824 7090  
paul@gartonjones.com  
www.gartonjones.com

## £680 Per Week

Stunning One bedroom apartment located in this final landmark building here at Chelsea Creek the Kings Tower which offers high quality accommodation with enviable high-class facilities. The 8th Floor apartment will offer fantastic northwest views and offers 626sqft/58.1sqm of elegant accommodation comprising of a spacious lounge and balcony, double bedroom with built in wardrobe, bathroom, and ample storage space. The Kings tower residence will have access to the Halcyon Club which will offer a 31st floor sky lounge and terrace with enviable views towards the city, residents cinema, business lounge & private meeting rooms, 24-hour concierge and a fitness centre offering an indoor pool, sauna & steam room as well as a gymnasium.

Please note furniture may differ to that shown in the current photos.

5 Weeks Security Deposit  
12 Month Tenancy  
Council Tax — London Borough Of  
Hammersmith & Fulham — Band F

EPC B(81)

EPC certificate available on request.

- • Stunning Apartment
- One Bedroom
- 626sqft (58.1sqm)
- Furnished
- 8th Floor With Great Views
- Balcony
- Residents Sky Roof Terrace & Lounge At The Halcyon Club, Two Residents Cinema's & Business Lounge
- Fitness Centre, Indoor Pool, Sauna & Steam Room, Gymnasium
- Available 8th July 2025
- EPC - B (86)

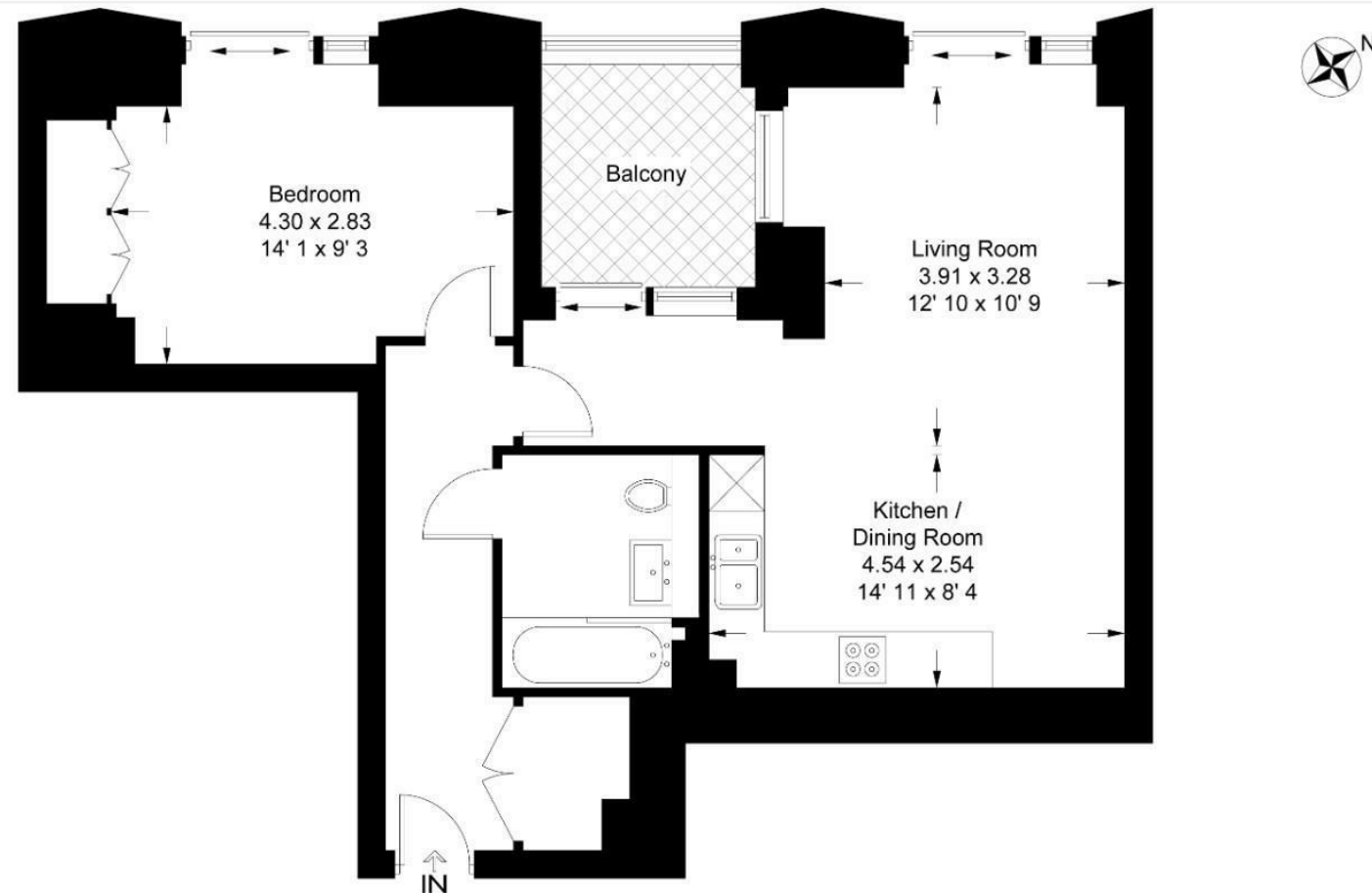


## Kings Tower

Approximate Gross Internal Area = 626 sq ft / 58.1 sq m

Balcony = 65 sq ft / 6 sq m

GARTON JONES  
LONDON



This plan is not to scale and must be used as layout guidance only. All measurements and areas are approximate and should not be relied upon to provide accurate information. This plan must not be relied upon when making property valuations, design considerations or any other such relevant decisions. We accept no responsibility or liability (whether in contract, tort or otherwise) in relation to any loss whatsoever arising from or in connection with any use of this plan or the adequacy, accuracy or completeness of it or any information within it.





