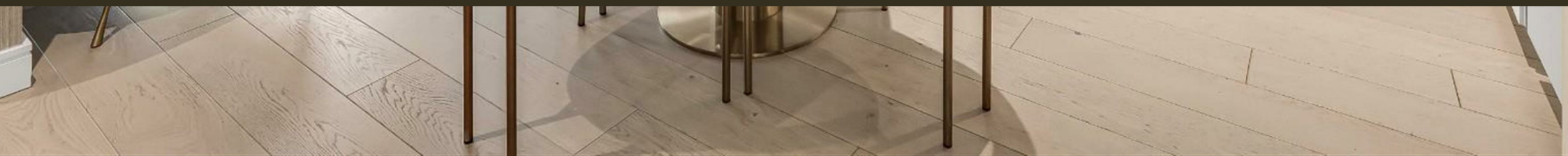




Fairview House, Chelsea Creek
London SW6

GARTON JONES.COM



Fairview House, Chelsea Creek London, SW6

GARTON JONES.COM

11 Park Street
Chelsea Creek
London
SW6 2FS

Sales +44 (0) 20 7824 7090
paul@gartonjones.com
www.gartonjones.com

£625 Per Week

ONLINE VIDEO available for this stylish one-bedroom furnished apartment situated on the 2nd floor with lift and offering 568sqft (52.9sqm) of accommodation, the apartment comprises one double bedroom with built-in storage, bathroom and an open-plan reception room with a fully integrated modern kitchen, dining space and a balcony. Residents have the benefit of exclusive membership of the private fitness suite, spa and swimming pool. The building itself offers excellent security with all properties having a video entry phone system & 24-hour concierge. Chelsea Creek is home to luxurious riverside apartments that bring a characteristically European style of waterside living to Central London. A stunning location with tree-lined avenues and meandering waterways offer a refreshingly unique urban lifestyle. Just moments from your doorstep you will find the local bars, restaurants and cafes of Imperial Wharf and shop endlessly on the nearby King's Road, Sloane Street or Westfield.

** Please note furniture may differ to that shown in the current photos **

5 Weeks Security Deposit
12-Month Contract
Council Tax — London Borough of Hammersmith & Fulham — Band E

EPC B (85)

- One Bedroom
- Furnished
- Well Presented Stylish Apartment
- 568Sqft — 52.9Sqm
- 2nd Floor With Balcony
- 24 Hour Concierge
- Highly Sought After Modern Development
- Fitness Suite With Gym & Swimming Pool
- Close To Imperial Wharf Overground Station
- EPC B (85)

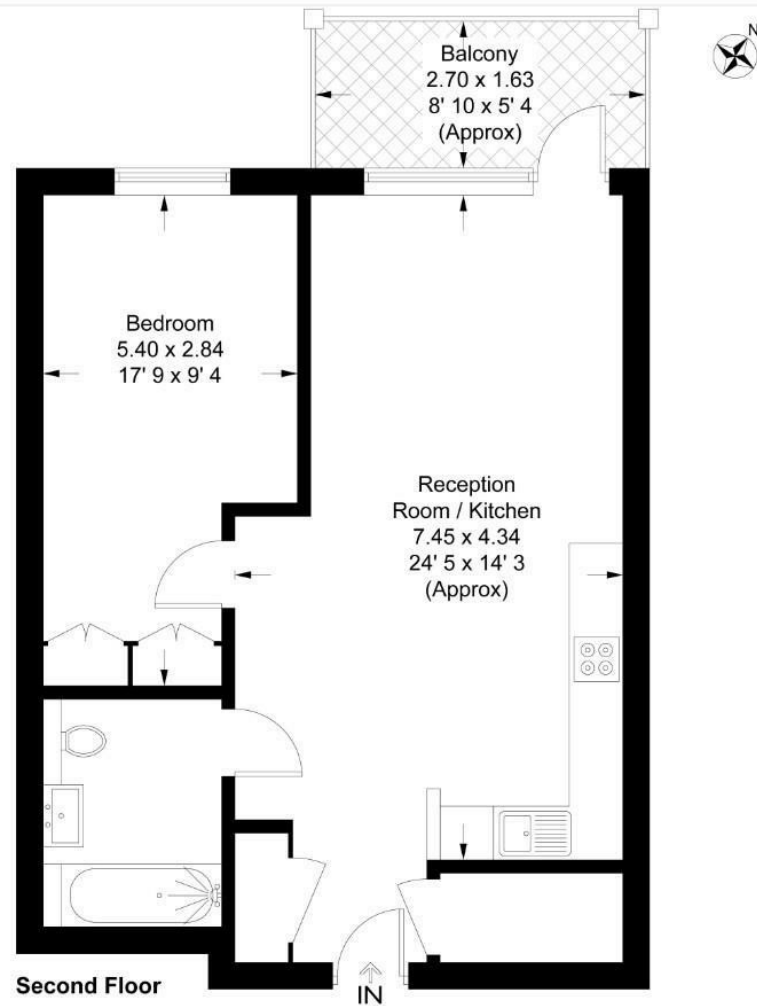


EPC certificate available on request.

Fairview House

Approximate Gross Internal Area = 595 sq ft / 55.3 sq m
Balcony = 47 sq ft / 4.4 sq m

GARTON JONES
LONDON



This plan is not to scale and must be used as layout guidance only. All measurements and areas are approximate and should not be relied upon to provide accurate information. This plan must not be relied upon when making property valuations, design considerations or any other such relevant decisions. We accept no responsibility or liability (whether in contract, tort or otherwise) in relation to any loss whatsoever arising from or in connection with any use of this plan or the adequacy, accuracy or completeness of it or any information within it.



