



Westwood Building, Chelsea Creek
London SW6

GARTON JONES.COM

Westwood Building, Chelsea Creek London, SW6

GARTON JONES.COM

11 Park Street
Chelsea Creek
London
SW6 2FS

Sales +44 (0) 20 7824 7090
paul@gartonjones.com
www.gartonjones.com

£923 Per Week

ONLINE VIDEO AVAILABLE - A stunning brand new two-bedroom apartment 884sqft (80sqm) located on the 3rd floor with pretty canal views and furnished to an exceptional modern style, whilst situated within the Westwood Building which forms part of this highly desirable development in Fulham. The apartment offers a stylish & bright open plan living space, modern kitchen with integrated high specs appliances. Underfloor heating throughout and retro light setting. A wall to ceiling glass doors lead to a large private balcony. The master bedroom benefits from an ensuite and built in fitted wardrobes, the second bedroom is currently configured as an office, guest bathroom. Amazing private balcony overlooking the canal & communal space. Chelsea Creek is situated in one of London's most elegant dockside developments, which combines luxurious central London living whilst overlooking tranquil waterways, tree lined avenues and landscape gardens. Residents benefit from 24 Hour Concierge, Spa and fitness suite with Swimming pool. King's Road and Chelsea Harbour are easily accessible and Imperial Wharf Station is just a few minutes' walk.

Please note furniture may differ to that shown in the current photos.

5 Weeks Security Deposit
12 Month Tenancy
Council Tax — London Borough Of Hammersmith & Fulham — Band G
EPC - B (84)

- Brand New Two Bedroom Apartment
- Desirable Dockside Development In SW6
- 884sqft (80sqm)
- Balcony
- 3rd Floor With Lift
- Furnished
- Spacious Open Plan Living
- Premium Residents facilities — Residents Swimming pool, Gymnasium
- Available 2nd May 2025
- EPC - B (84)



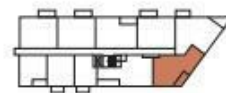
EPC certificate available on request.

G1-208
2 BEDROOM APARTMENT

SECOND, THIRD, FOURTH, FIFTH AND SIXTH FLOORS
APARTMENTS 988, 998, 1008, 1018 & 1028



G1 - SECOND FLOOR



ELEVATION
SOUTHEAST



TOTAL INTERNAL AREA	80.29 SQ M	864 SQ FT
LIVING/ DINING	3.78M X 7.46M	12' 5" X 24' 6"
KITCHEN	3.09M X 2.92M	10' 2" X 9' 7"
MASTER BEDROOM	3.71M X 3.35M	12' 2" X 11' 0"
BEDROOM 2	3.19M X 3.50M	10' 2" X 11' 6"
BALCONY	6.09 SQ M	66 SQ FT

