



Majesty House, Islington  
London WC1X

GARTONJONES.COM

# Majesty House, Islington London, WC1X

GARTON JONES.COM

11 Park Street  
Chelsea Creek  
London  
SW6 2FS

Sales +44 (0) 20 7824 7090  
paul@gartonjones.com  
www.gartonjones.com

## £1,200 Per Week

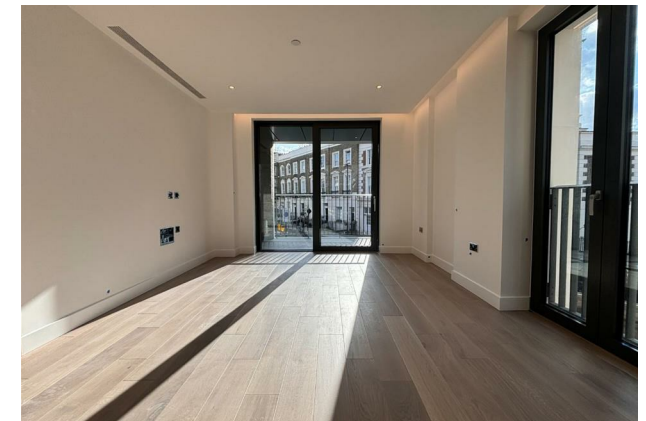
A brand new two-bedroom apartment located at the Postmark development WC1. This property comprises a large bright open plan kitchen and living room leading to a large private balcony with great views, two double bedrooms with fitted wardrobes (master en-suite), a large family sized bathroom and ample storage. Fantastic luxury facilities include a 24-hour VIP concierge service, private living room, cinema, rooftop terrace and bar, atrium garden, gym, sauna, treatment room, luxury swimming pool, spa. The location offers Kings Cross Thameslink Station, Russell Square Station & Farringdon Station all within half a mile away.

**\*\*Please note the furniture may differ or not be included to that shown in the current photos\*\***

6 Weeks Security Deposit  
12 Month Tenancy  
Council Tax — Camden- Band TBC

EPC — TBC

- Two Bedroom
- 861sqft (80sqm)
- 1st Floor
- Furnished
- Brand New
- Highly Desirable Postmark Development
- Premium Residents Facilities — Including 24-Hour VIP Concierge Service, Private Living Room, Cinema, Rooftop Terrace And Bar, Atrium Garden, Gym, Sauna, Treatment Room, Luxury Swimming Pool & Spa.
- Kings Cross Thameslink Station, Russell Square Station & Farringdon Station All Within Half A Mile Away
- Available 1st December 2024
- EPC - TBC



EPC certificate available on request.

GARTON JONES.COM





