



Compass House, Chelsea Creek
Fulham SW6

GARTON JONES.COM



Compass House, Chelsea Creek Fulham, SW6

GARTON JONES.COM

11 Park Street
Chelsea Creek
London
SW6 2FS

Sales +44 (0) 20 7824 7090
paul@gartonjones.com
www.gartonjones.com

£2,250,000 Leasehold

An opportunity to purchase this unique 3-bedroom SUB PENTHOUSE located within the highly desirable Berkeley Home's built development at Chelsea Creek SW6. This spacious contemporary interior designed apartment which has recently been redecorated offers an abundance of space 1475sqft (137sqm) and consists of a master bedroom with balcony, excellent built-in storage, luxury bathroom, further two double bedrooms and a guest bathroom, utility room, spacious open plan reception room with access to a wraparound balcony with far reaching views, fully fitted kitchen / breakfast room with integrated appliances. The development offers a resident's gym & spa, 24-hour concierge & communal landscaped gardens. Chelsea Creek is located a short distance from the amenities of the Kings Road, and moments from Imperial Wharf over ground station which is one stop from both West Brompton station (district line) and Clapham Junction.

- Sub Penthouse — 7Th Floor
- Three Bedrooms
- Unique Layout
- 1475sqft / 137sqm
- Two Balconies
- Spacious Reception Room
- Kitchen / Breakfast Room
- 24 Hour Concierge
- Residents Gym & Spa
- EPC B (81)



Please note that the furniture may differ to that shown in the current photos

Lease - 999 years from 2010
Service Charge - £10932pa
Ground Rent - £550pa

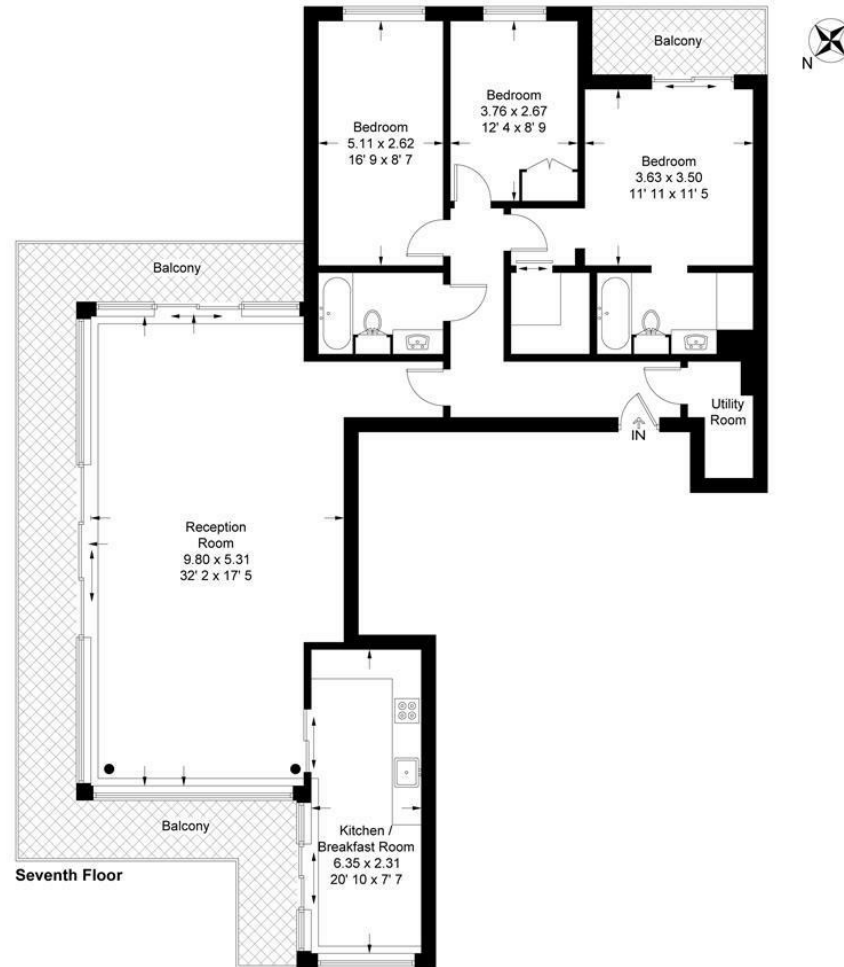
Council Tax — London Borough Of Hammersmith & Fulham — Band H
EPC B (81)

EPC certificate available on request.

Compass House

Approximate Gross Internal Area = 1475 sq ft / 137 sq m

GARTON JONES
LONDON



This plan is not to scale and must be used as layout guidance only. All measurements and areas are approximate and should not be relied upon to provide accurate information. This plan must not be relied upon when making property valuations, design considerations or any other such relevant decisions. We accept no responsibility or liability (whether in contract, tort or otherwise) in relation to any loss whatsoever arising from or in connection with any use of this plan or the adequacy, accuracy or completeness of it or any information within it.



