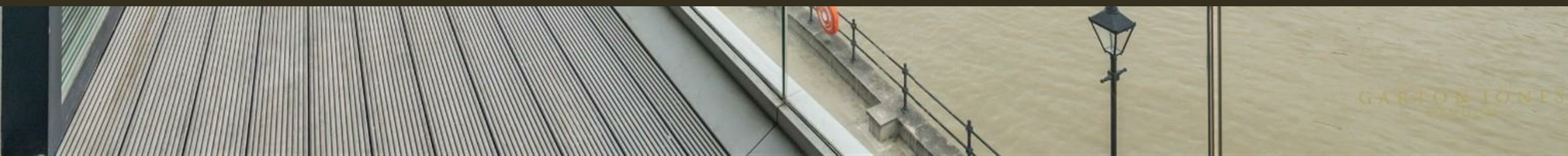




Riverwalk, Central Avenue  
Fulham SW6

GARTON JONES.COM



# Riverwalk, Central Avenue Fulham, SW6

GARTON JONES.COM

11 Park Street  
Chelsea Creek  
London  
SW6 2FS

Sales +44 (0) 20 7824 7090  
paul@gartonjones.com  
www.gartonjones.com

## £1,153 Per Week

This is not your typical apartment ! This is a truly sensational two-bedroom duplex apartment 1217sqft (113sqm) which has been meticulously refurbished to the highest standard and configured like a house with its own entrance and benefitting from uninterrupted river views. The property comprises of a patio to the front of the property overlooking the communal grounds, internally you will find a guest cloakroom, amazing 21'4 (6.5sqm) x 14'4(4.37sqm) lounge with access to a balcony and river views, modern kitchen with integrated appliances and breakfast bar. On the lower floor you will find two double bedrooms also with balcony access, ensuite to the master bedroom and a further family bathroom. Fulham Riverside is a highly sought after riverside development set over 8 acres and is arranged around beautifully landscaped private gardens, transport links nearby include 0.6m to Parsons Green Tube — 0.6m to Imperial Wharf Overground Station, locally you will find local supermarkets, popular bars, shops and restaurants of the Kings Road and Sloane Square.

**\*\*Please note that the furniture may differ to that shown in the current photos\*\***

Available from the 7th September 2024  
12 Month Contract  
5 weeks security deposit  
Council Tax London Borough Of Hammersmith & Fulham  
— Band G  
EPC B (81)

- Stunning Two Bedroom Duplex Apartment
- Meticulously refurbished to the highest standard throughout
- Own Entrance
- Uninterrupted River Views
- Furnished With High Quality Furniture
- Modern Riverside Development
- 24 Hour Concierge
- Residents Gym
- 0.6m to Parsons Green Tube & Imperial Wharf Overground Station



EPC certificate available on request.

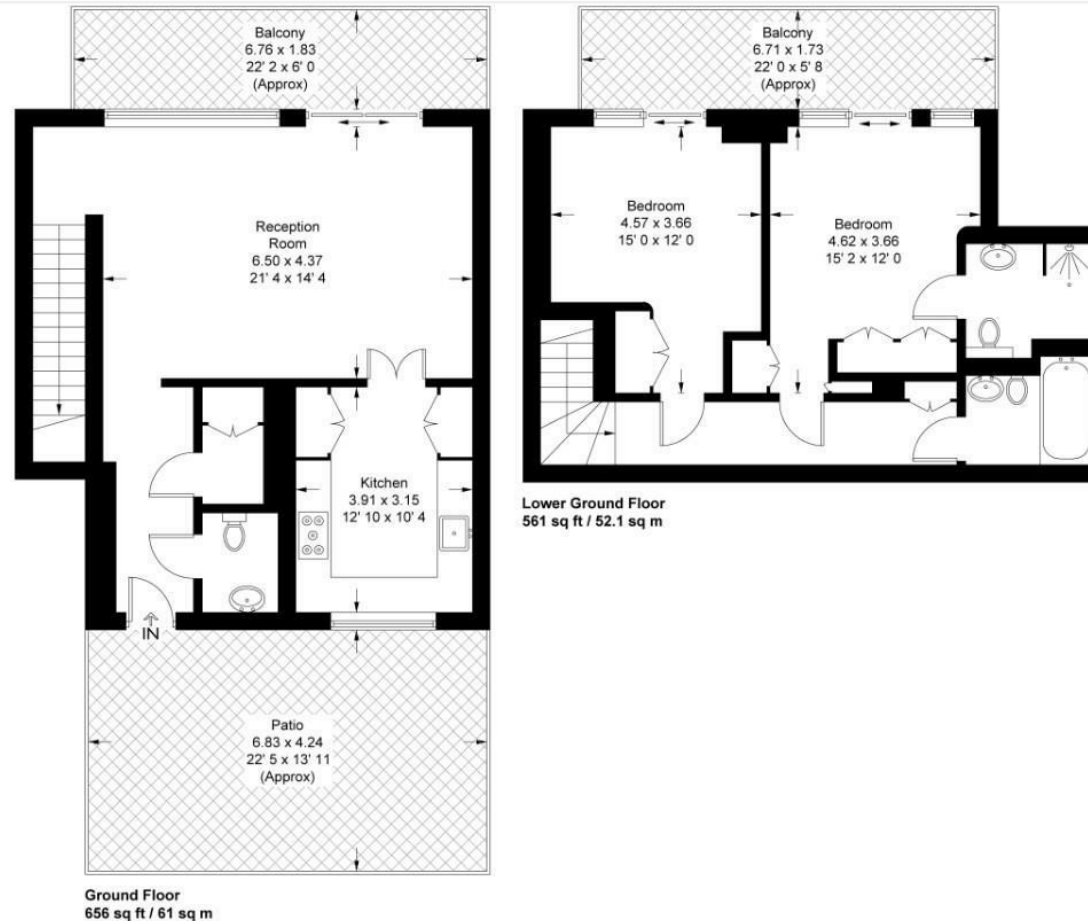
## Riverwalk

Approximate Gross Internal Area = 1217 sq ft / 113.1 sq m

Patio = 312 sq ft / 29 sq m

Balcony = 258 sq ft / 24 sq m

GARTON JONES  
LONDON



This plan is not to scale and must be used as layout guidance only. All measurements and areas are approximate and should not be relied upon to provide accurate information. This plan must not be relied upon when making property valuations, design considerations or any other such relevant decisions. We accept no responsibility or liability (whether in contract, tort or otherwise) in relation to any loss whatsoever arising from or in connection with any use of this plan or the adequacy, accuracy or completeness of it or any information within it.





