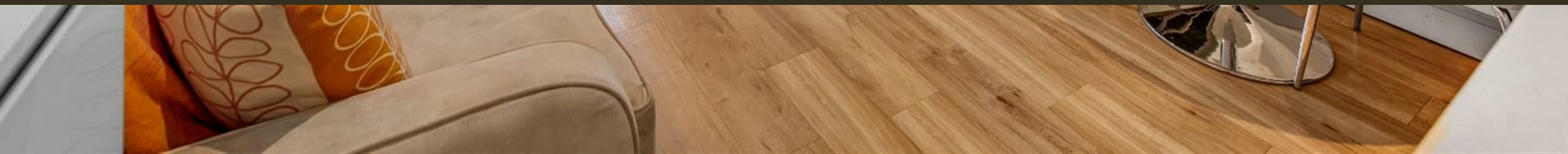




Compass House, Chelsea Creek
London SW6

GARTON JONES.COM



Compass House, Chelsea Creek London, SW6

GARTON JONES.COM

11 Park Street
Chelsea Creek
London
SW6 2FS

Sales +44 (0) 20 7824 7090
paul@gartonjones.com
www.gartonjones.com

£425 Per Week

A stylish furnished studio apartment, 286sq.ft (26.6sq.m) located on the 3rd floor of Compass House which forms part of the highly desirable dockside development Chelsea Creek. The modern studio offers well-presented accommodation living area, kitchen with integrated appliances and luxury bathroom. Onsite there is a 24-Hour Concierge, exclusive use of The Spa, health and fitness suite with an indoor swimming pool, sauna, steam room, gymnasium, and treatment room. The stylish King's Road and Chelsea Harbour, with its many restaurants, bars and boutiques are easily accessible and Imperial Wharf Station is just a few minutes' walk.

5 Weeks Security Deposit

Please note furniture may differ to that shown in the current photo

5 Weeks Security Deposit

12 Month Tenancy

Council Tax — London Borough of
Hammersmith & Fulham — Band D

EPC B(84)

EPC certificate available on request.

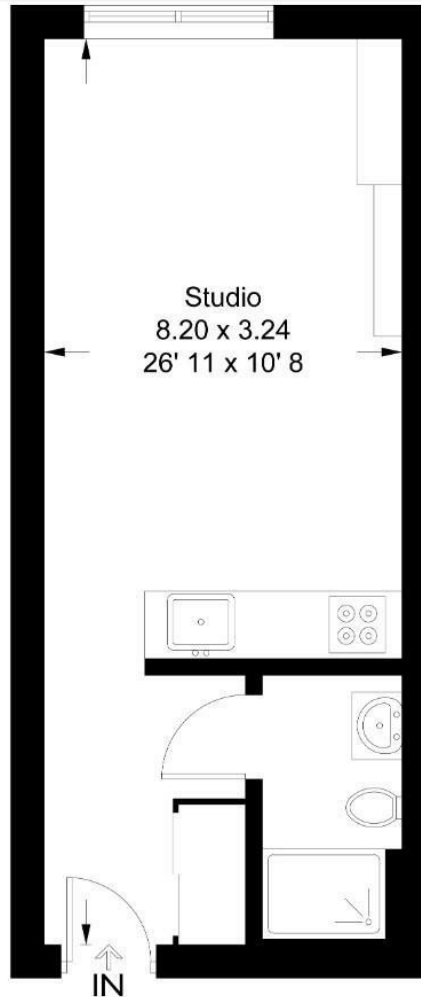
- Stylish Studio Apartment
- Furnished
- Well Maintained Throughout
- 286sqft (26.6sqm)
- Modern Kitchen
- Balcony
- 3rd Floor
- Fitness Centre, Indoor Pool, Sauna & Steam Room, Gymnasium
- 24 Hour Concierge
- EPC B(84)



Compass House

Approximate Gross Internal Area = 286 sq ft / 26.6 sq m

GARTON JONES
LONDON



This plan is not to scale and must be used as layout guidance only. All measurements and areas are approximate and should not be relied upon to provide accurate information. This plan must not be relied upon when making property valuations, design considerations or any other such relevant decisions. We accept no responsibility or liability (whether in contract, tort or otherwise) in relation to any loss whatsoever arising from or in connection with any use of this plan or the adequacy, accuracy or completeness of it or any information within it.



