



Merino Gardens, London Dock
E1W

GARTON JONES.COM



Merino Gardens, London Dock , E1W

GARTON JONES.COM

11 Park Street
Chelsea Creek
London
SW6 2FS

Sales +44 (0) 20 7824 7090
paul@gartonjones.com
www.gartonjones.com

£950 Per Week

AVAILABLE FROM THE 26th SEPTEMBER - A stylish furnished Two-bedroom apartment located on the 2nd floor of this building which forms part of the London Dock development by St George which is nestled in the heart of Wapping. The stunning apartment offers 794sqft (73sqm) of accommodation comprising of entrance hall, open plan modern living with access to a balcony, master bedroom with ensuite and built in wardrobe area, further second bedroom and a family bathroom. London Dock is a highly impressive modern development located 0.5 of a mil from Tower Hill tube and moments from iconic landmarks of Tower Bridge, the Tower of London, St Katherines Docks. Residents have luxury amenities such as a private screening room, spa, gym, squash court, virtual golf and 24-hour concierge.

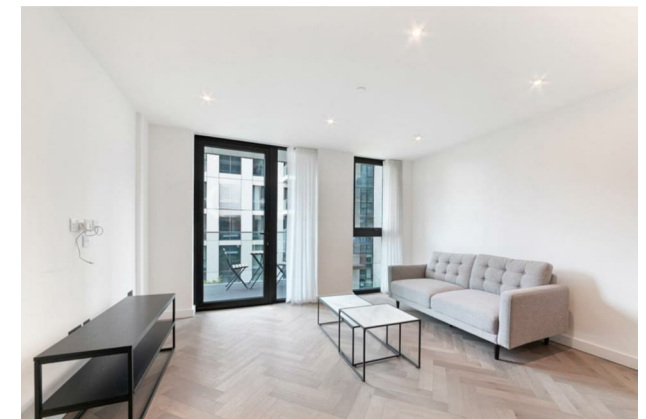
Please note the furniture may differ or not be included to that shown in the current photos.

5 Weeks Security Deposit
12 Month Tenancy
Council Tax — Tower Hamlets, Band TBC

EPC — B (83)

EPC certificate available on request.

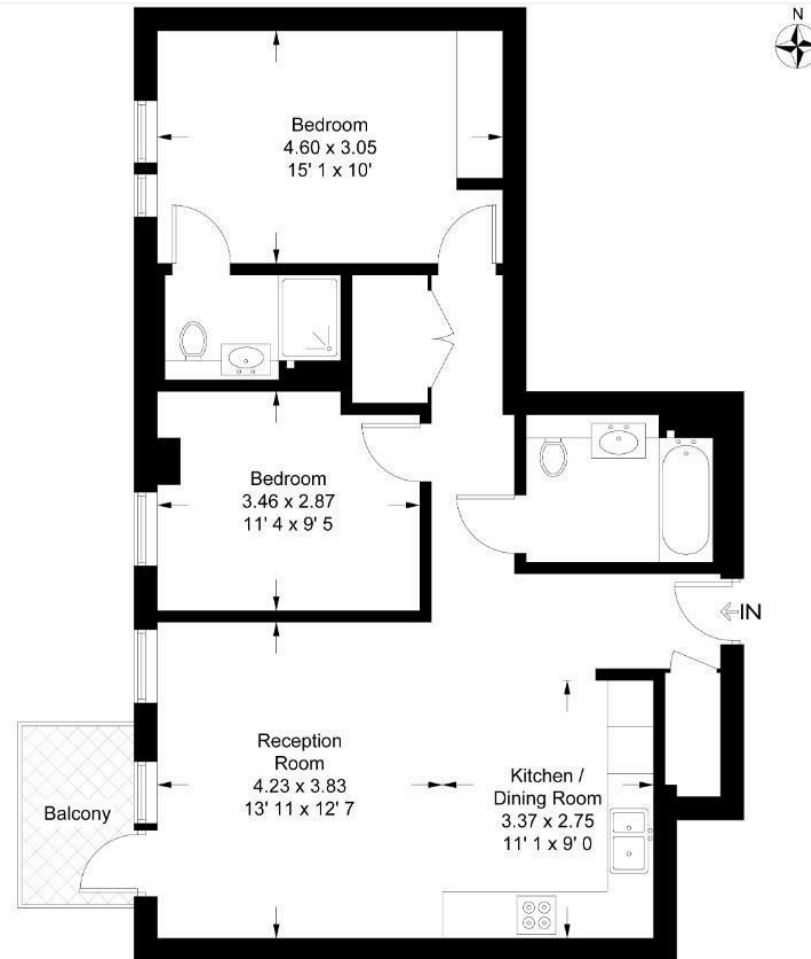
- Two Bedroom Apartment
- 2nd Floor
- 794sqft (73sqm)
- Furnished
- Highly Desirable Berkeley Homes Development
- 24 Hour Concierge
- Premium Residents facilities — Including Gym, Spa, Virtual Golf, Cinema and Residents Lounge
- 0.5m to Tower Hill Station
- Short Walk Into The City
- EPC — B (83)



Merino Gardens

Approximate Gross Internal Area = 794 sq ft / 73.8 sq m
 Balcony = 37 sq ft / 3.4 sq m

GARTON JONES
 LONDON



Second Floor

This plan is not to scale and must be used as layout guidance only. All measurements and areas are approximate and should not be relied upon to provide accurate information. This plan must not be relied upon when making property valuations, design considerations or any other such relevant decisions. We accept no responsibility or liability (whether in contract, tort or otherwise) in relation to any loss whatsoever arising from or in connection with any use of this plan or the adequacy, accuracy or completeness of it or any information within it.



