



Chelsea Creek Tower, Chelsea Creek  
Fulham SW6

GARTON JONES.COM



# Chelsea Creek Tower, Chelsea Creek Fulham, SW6

GARTON JONES.COM

11 Park Street  
Chelsea Creek  
London  
SW6 2FS

Sales +44 (0) 20 7824 7090  
paul@gartonjones.com  
www.gartonjones.com

## £750,000 Leasehold

An opportunity to purchase this delightful one bedroom apartment which is on the 7th floor of the Chelsea Creek Tower which remains one of the most sought-after buildings here at Chelsea Creek. The highly impressive accommodation offers 773sqft (71.8sqm) with an open plan lounge with media unit & modern kitchen area which benefits from Miele integrated appliances, East Facing balcony, double bedroom with built in wardrobes and bathroom. The development offers a resident's gym & spa, 24-hour concierge & communal landscaped gardens. Chelsea Creek is located a short distance from the amenities of the Kings Road, and moments from Imperial Wharf over ground station which is one stop from both West Brompton station (district line) and Clapham Junction.

- Highly Sought After Building Here At Chelsea Creek
- One Double Bedroom
- 773sqft (71.8sqm)
- 7th Floor
- Open Plan Lounge and Kitchen
- TV Media Unit
- Integrated Miele Appliances
- Onsite Facilities — Gym , Swimming Pool & 24-Hour Concierge
- East Facing Balcony
- EPC B (84)



\*\* Photos staged for marketing purposes \*\*

Lease 999 from 2010  
Service Charge - £9,170.00  
Ground Rent - £500.00

Council Tax — London Borough Of  
Hammersmith & Fulham — Band F  
EPC B (84)

EPC certificate available on request.

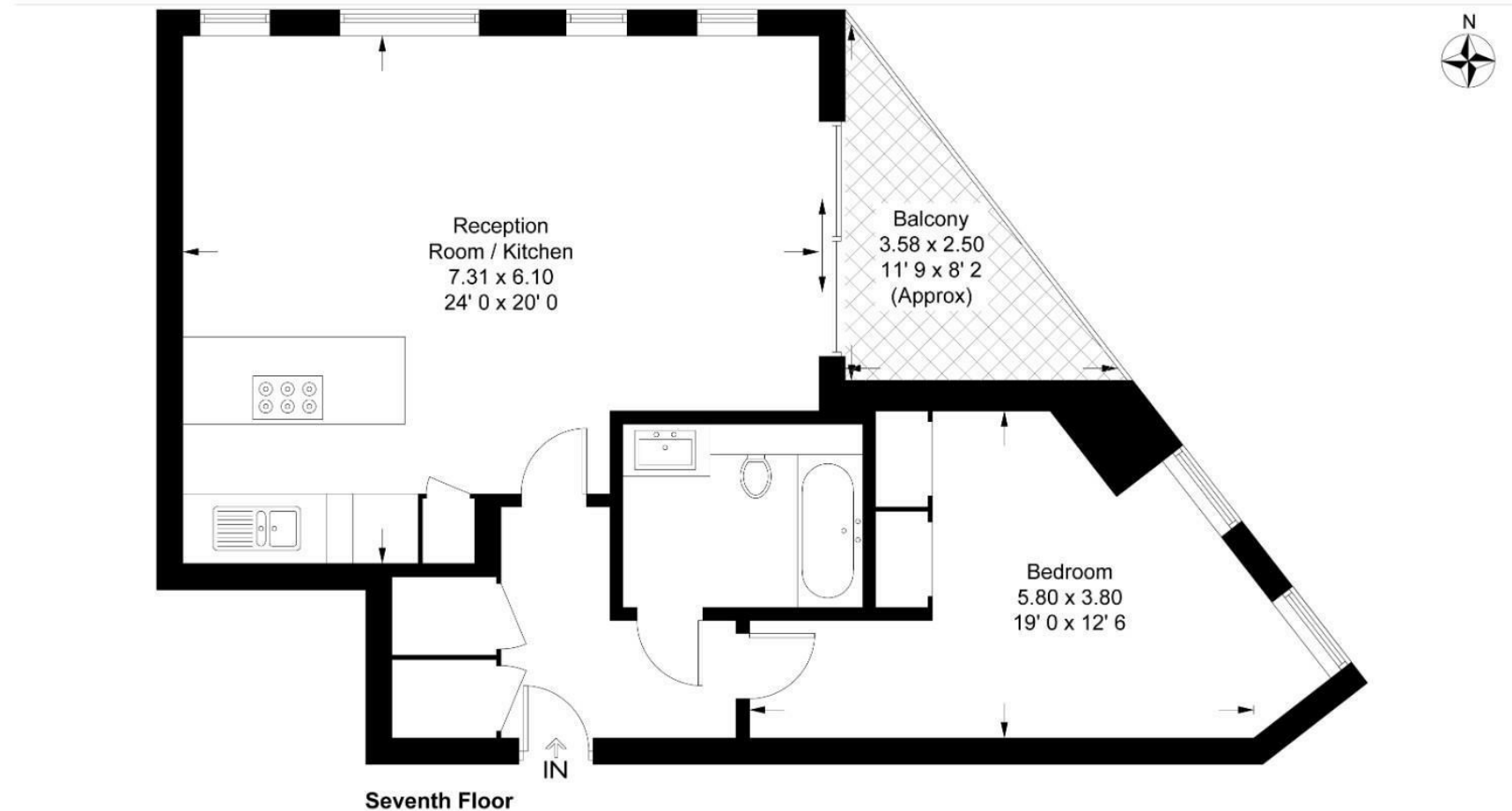


## Chelsea Creek Tower

Approximate Gross Internal Area = 773 sq ft / 71.8 sq m

Balcony = 48 sq ft / 4.5 sq m

GARTON JONES  
LONDON



This plan is not to scale and must be used as layout guidance only. All measurements and areas are approximate and should not be relied upon to provide accurate information. This plan must not be relied upon when making property valuations, design considerations or any other such relevant decisions. We accept no responsibility or liability (whether in contract, tort or otherwise) in relation to any loss whatsoever arising from or in connection with any use of this plan or the adequacy, accuracy or completeness of it or any information within it.



