



Kings Tower, Chelsea Creek
London SW6

GARTON JONES.COM



Kings Tower, Chelsea Creek London, SW6

GARTON JONES.COM

11 Park Street
Chelsea Creek
London
SW6 2FS

Sales +44 (0) 20 7824 7090
paul@gartonjones.com
www.gartonjones.com

£950 Per Week

Unfurnished stunning two-bedroom apartment located within the Chelsea Creek The Kings Tower which offers high quality accommodation with enviable high-class facilities. The Stylish apartment is offering South West views and offers 907sqft/84.2sqm of elegant accommodation comprising of a spacious lounge and access to the balcony, two bedrooms both benefitting from built in wardrobes and the master also has access to an ensuite, family bathroom, ample storage space in the entrance hall. The Kings tower residence will have access to the Halcyon Club which will offer a 31st floor sky lounge and terrace with enviable views towards the city, residents cinema, business lounge & private meeting rooms, 24-hour concierge and a fitness centre offering an indoor pool, sauna & steam room as well as a gymnasium.

Please note that the furniture may differ to that shown in the current photos

5 Weeks Security Deposit - £4750
12 Month Tenancy
Council Tax — Hammersmith & Fulham — Band
TBC

EPC B (86)

EPC certificate available on request.

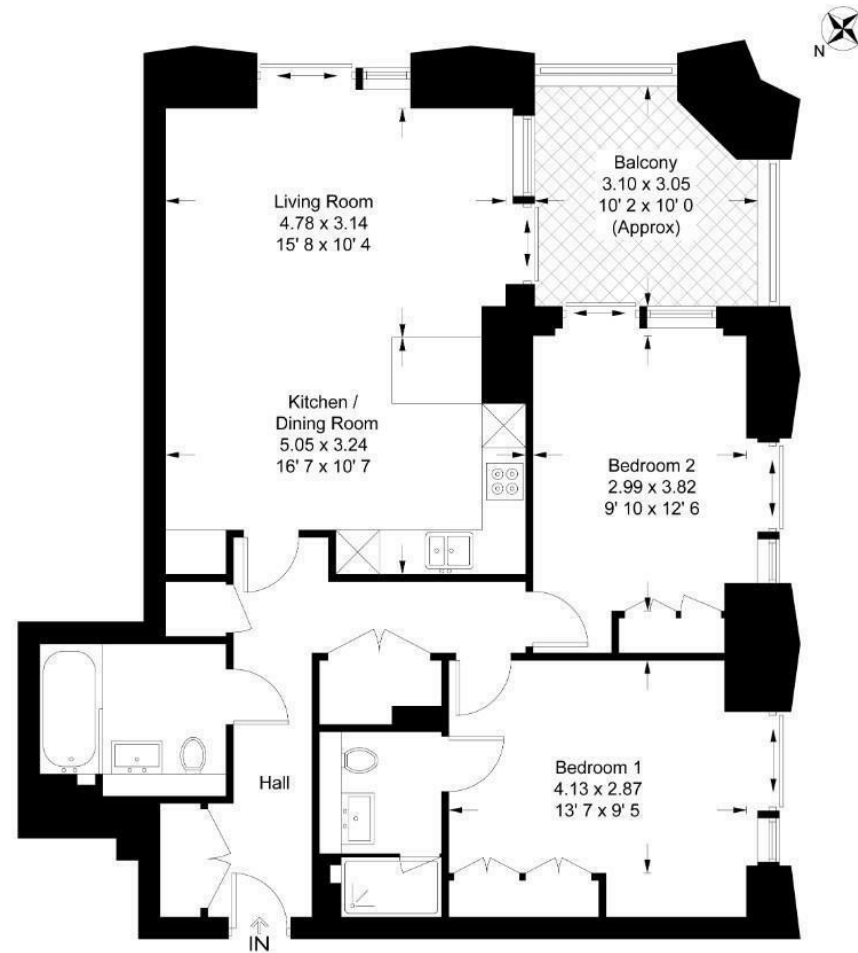
- Two Bedrooms
- Brand New Apartment
- 907sqft (84.2sqm)
- Unfurnished
- Great Views
- Balcony
- Residents Sky Roof Terrace & Lounge At The Halcyon Club, Residents Cinema's & Business Lounge
- 24 Hour Concierge
- Available To View
- EPC B (86)



Kings Tower

Approximate Gross Internal Area = 907 sq ft / 84.2 sq m
 Balcony = 108 sq ft / 10 sq m

GARTON JONES
 LONDON



This plan is not to scale and must be used as layout guidance only. All measurements and areas are approximate and should not be relied upon to provide accurate information. This plan must not be relied upon when making property valuations, design considerations or any other such relevant decisions. We accept no responsibility or liability (whether in contract, tort or otherwise) in relation to any loss whatsoever arising from or in connection with any use of this plan or the adequacy, accuracy or completeness of it or any information within it.



