



Meadows House, Chelsea Creek  
London SW6

GARTONJONES.COM



# Meadows House, Chelsea Creek London, SW6

GARTON JONES.COM

11 Park Street  
Chelsea Creek  
London  
SW6 2FS

Lettings:  
+44 (0) 20 7824 7090  
paul@gartonjones.com  
www.gartonjones.com

## £650 Per Week

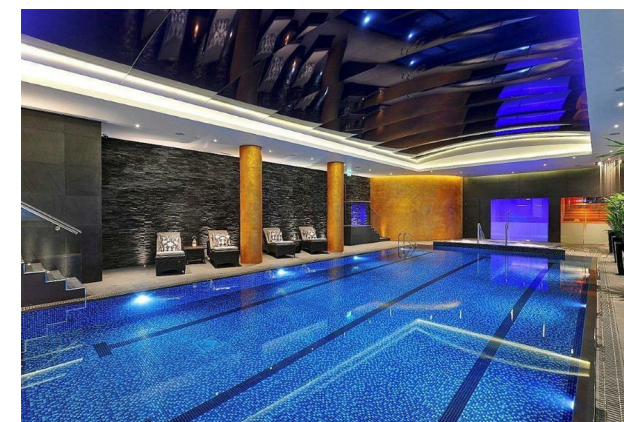
A beautifully presented 5th floor Manhattan style one-bedroom apartment 465sqft (43sqm) available to rent in Chelsea Creek. This stunning apartment is offered furnished and has been completed to a high standard. The property comprises an open plan kitchen with built-in appliances and marble worktops, a bright reception room leading into the bedroom with built-in wardrobes. There is a balcony overlooking the development and a quality bathroom with bathtub and overhead shower. The apartment benefits from good storage throughout and has underfloor heating and comfort cooling. Meadows House is part of Chelsea Creek, a sought-after development moment away from Imperial Wharf overground station and Fulham Broadway underground is also a short walk away with a range of cafes & restaurants. Residents have the exclusive use of fantastic onsite facilities including gym, swimming pool, spa facilities & 24-hour concierge.

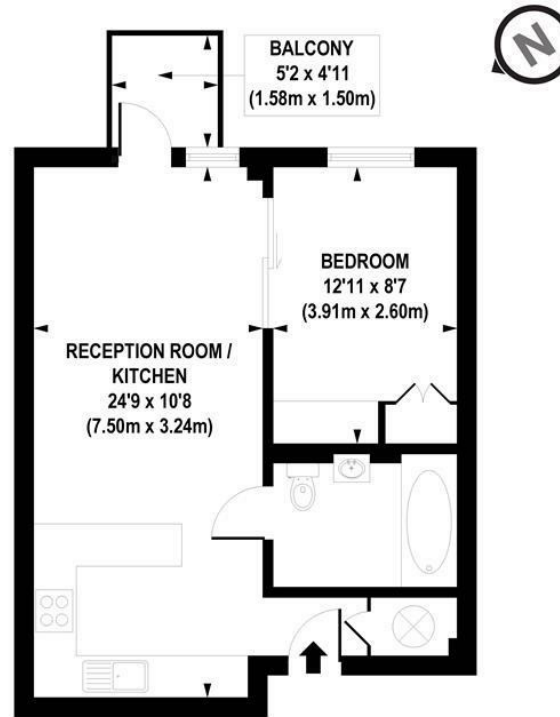
\*\* Please note furniture may differ to that shown in the current photos \*\*

5 Weeks Deposit  
12-Month Contract  
London Borough Of Hammersmith & Fulham Council  
— Band E

EPC — B (89)

- Manhattan Style Apartment
- 465sq.ft (43sq.m)
- 5th Floor — with lift
- Stylish Furniture
- Modern Development
- Balcony
- Swimming Pool & Spa
- 24 Hour Concierge
- Close to Imperial Wharf Station
- EPC — B (89)





APPROX. GROSS INTERNAL FLOOR AREA 465 sq. ft / 43.18 sq. m

Floorplan is for illustrative purposes only and is not to scale.  
Every attempt has been made to ensure the accuracy of the floorplan shown, however all measurements, fixtures, fittings and data shown are an approximate interpretation for illustrative purposes only.  
Liability for errors, omissions or mis-statement through negligence or otherwise is hereby excluded.

**CP CREATIVE**  
PROPERTY MARKETING

