



Trevor Place, Knightsbridge
London SW7

GARTONJONES.COM

Trevor Place, Knightsbridge London, SW7

GARTON JONES.COM

11 Park Street
Chelsea Creek
London
SW6 2FS

Sales +44 (0) 20 7824 7090
paul@gartonjones.com
www.gartonjones.com

£6,900 Per Week

RARELY AVAILABLE TO RENT - An Imposing & luxury 5-bedroom period house located within one of London's premier roads in the heart of Knightsbridge between Brompton Road and Hyde Park. which has been extended to offer 3204sqft (297sqm) of truly stunning accommodation. blending sympathetically with the original features which have been restored and incorporated into the design. The accommodation comprises of 4 bedrooms with en-suites as well as a further staff bedroom, 5 bathrooms, guest cloakroom, double reception room, media room, spacious open plan, kitchen/dining room, second kitchen, utility room, storeroom, private patio, comfort heating and cooling, video entry, alarm, CCTV. Knightsbridge is arguably London's premier residential area and is enhanced by many world class shops, hotels, and restaurants. The area is rich in historic and cultural landmarks, museums, galleries, and theatres. The location has excellent transport links, London Heathrow is approximately 15 miles (24 km) and London Paddington station is approximately 2.5 miles (4 km) and is also within walking distance of the wide-open spaces of Hyde Park, as well as Harrods and Harvey Nichols.

12 Month Tenancy
6 Week Deposit
Council Tax — Westminster Council Band H

EPC — D (67)

- Luxury 5 Bedroom Family Home
- Located Within One Of London's Premier Roads In The Heart Of Knightsbridge
- 4 Bedrooms With Ensuites
- 5 Bathrooms
- Double Reception Room
- Media Room
- Spacious Open Plan Kitchen / Dining
- Parking for 1 Car
- Close To Harrods, Harvey Nichols & Hyde Park
- EPC — D (67)



EPC certificate available on request.

Trevor Place

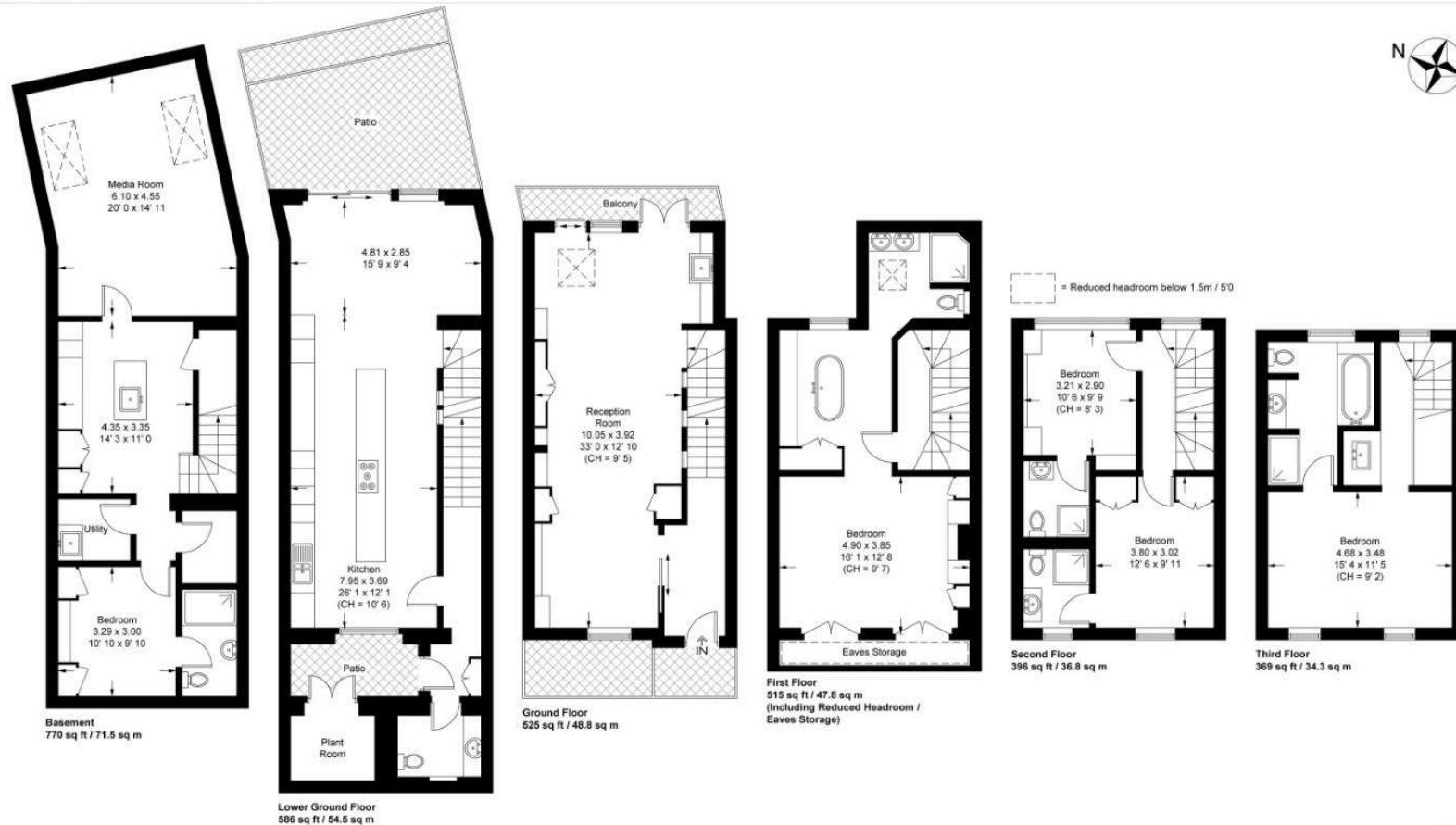
Approximate Gross Internal Area = 3133 sq ft / 291.1 sq m

(Excluding Reduced Headroom / Eaves Storage)

Reduced Headroom / Eaves Storage = 28 sq ft / 2.6 sq m

Plant Room = 43 sq ft / 4 sq m

Total = 3204 sq ft / 297.7 sq m



This plan is not to scale and must be used as layout guidance only. All measurements and areas are approximate and should not be relied upon to provide accurate information. This plan must not be relied upon when making property valuations, design considerations or any other such relevant decisions. We accept no responsibility or liability (whether in contract, tort or otherwise) in relation to any loss whatsoever arising from or in connection with any use of this plan or the adequacy, accuracy or completeness of it or any information within it.



