



Dockside House, Chelsea Creek  
London SW6

GARTON JONES.COM



# Dockside House, Chelsea Creek London, SW6

GARTON JONES.COM

11 Park Street  
Chelsea Creek  
London  
SW6 2FS

Sales +44 (0) 20 7824 7090  
paul@gartonjones.com  
www.gartonjones.com

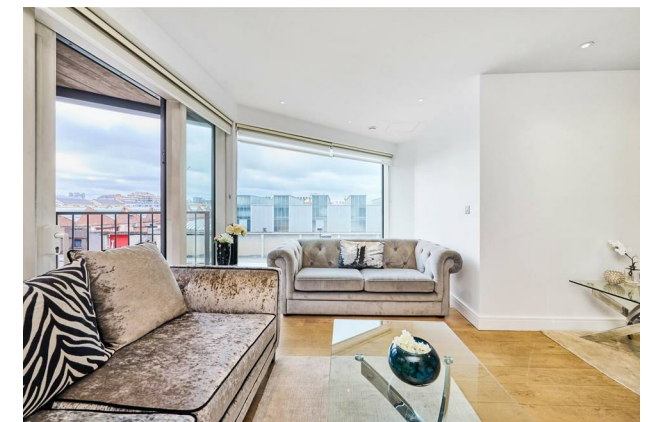
## £950,000 Leasehold

An opportunity to purchase this stylish two-bedroom apartment 656sqft (60.9sqm) situated on the second floor of Dockside House which forms part of the Chelsea Creek Development. The apartment is offered in good decorative order and offers a modern open plan living area, stylish kitchen area with access to a balcony, two bedrooms and a bathroom. The idyllic canal side development which was built by the renowned Berkeley St George offers On-site a resident's gym, swimming pool, spa and 24-hour concierge. Chelsea Creek is located nearby to Imperial Wharf Overground station and half a mile away you will find Fulham Broadway Underground station which offers District line services both offering excellent links around London as well as the famous Kings Road which offers a wide range of designer boutiques, top class restaurants, bars and quaint cafes.

Leasehold — 986 Remaining  
Service Charge — £4500PA  
Ground Rent — £320PA

Council Tax — London Borough Of  
Hammersmith & Fulham Band G  
EPC — B (87)

- Two Bedrooms
- Modern Apartment
- 656sqft (60.9sqm)
- Second Floor With Lift
- Balcony
- Desirable Dockside Development
- 24 Hour Concierge
- Residents Spa — Gymnasium , Swimming Pool & Sauna
- 0.1m To Imperial Wharf Station — 0.6m To Fulham Broadway
- EPC — B (87)

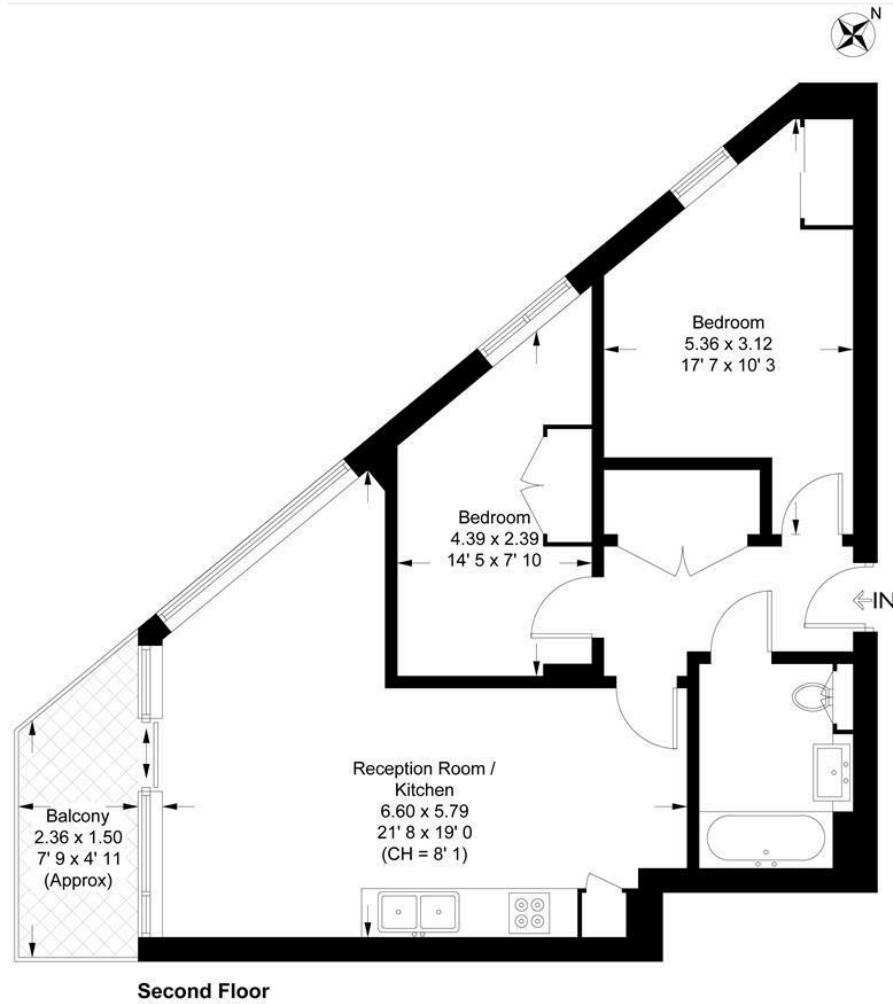


EPC certificate available on request.

**Dockside House**

Approximate Gross Internal Area = 656 sq ft / 60.9 sq m  
 Balcony = 56 sq ft / 5.2 sq m

GARTON JONES  
 LONDON



This plan is not to scale and must be used as layout guidance only. All measurements and areas are approximate and should not be relied upon to provide accurate information. This plan must not be relied upon when making property valuations, design considerations or any other such relevant decisions. We accept no responsibility or liability (whether in contract, tort or otherwise) in relation to any loss whatsoever arising from or in connection with any use of this plan or the adequacy, accuracy or completeness of it or any information within it.



