



Lockside House, Chelsea Creek  
London SW6

GARTON JONES.COM



# Lockside House, Chelsea Creek London, SW6

GARTON JONES.COM

11 Park Street  
Chelsea Creek  
London  
SW6 2FS

Sales +44 (0) 20 7824 7090  
paul@gartonjones.com  
www.gartonjones.com

## £850 Per Week

ONLINE VIDEO AVAILABLE for this beautifully presented two double bedroom, two bathroom (one en-suite) apartment to rent of approx. 886sq.ft (82.3sq.m), located in Lockside House in Chelsea Creek. This furnished apartment offers an open plan reception with access to a private terrace overlooking the communal gardens. There is a beautifully finished kitchen with a marble top breakfast bar and integrated appliances including an induction hob, dishwasher, oven, and fridge freezer. Additionally, there is a utility cupboard housing a washer dryer, good storage throughout, wood flooring, comfort cooling and under-floor heating. The development built by the renowned Berkeley St George benefits from an on-site gym, swimming pool, spa and 24 hour concierge. Chelsea Creek is located nearby to Imperial Wharf Overground station and Fulham Broadway Underground station both offering excellent links around London as well as the famous Kings Road which offers a wide range of designer boutiques, top class restaurants, bars and quaint cafes.

\*\*Please note that the furniture may differ to that shown in the current photos\*\*

Council tax — London Borough Of Hammersmith & Fulham — Band G  
12 Month Minimum Term

EPC - C (80)

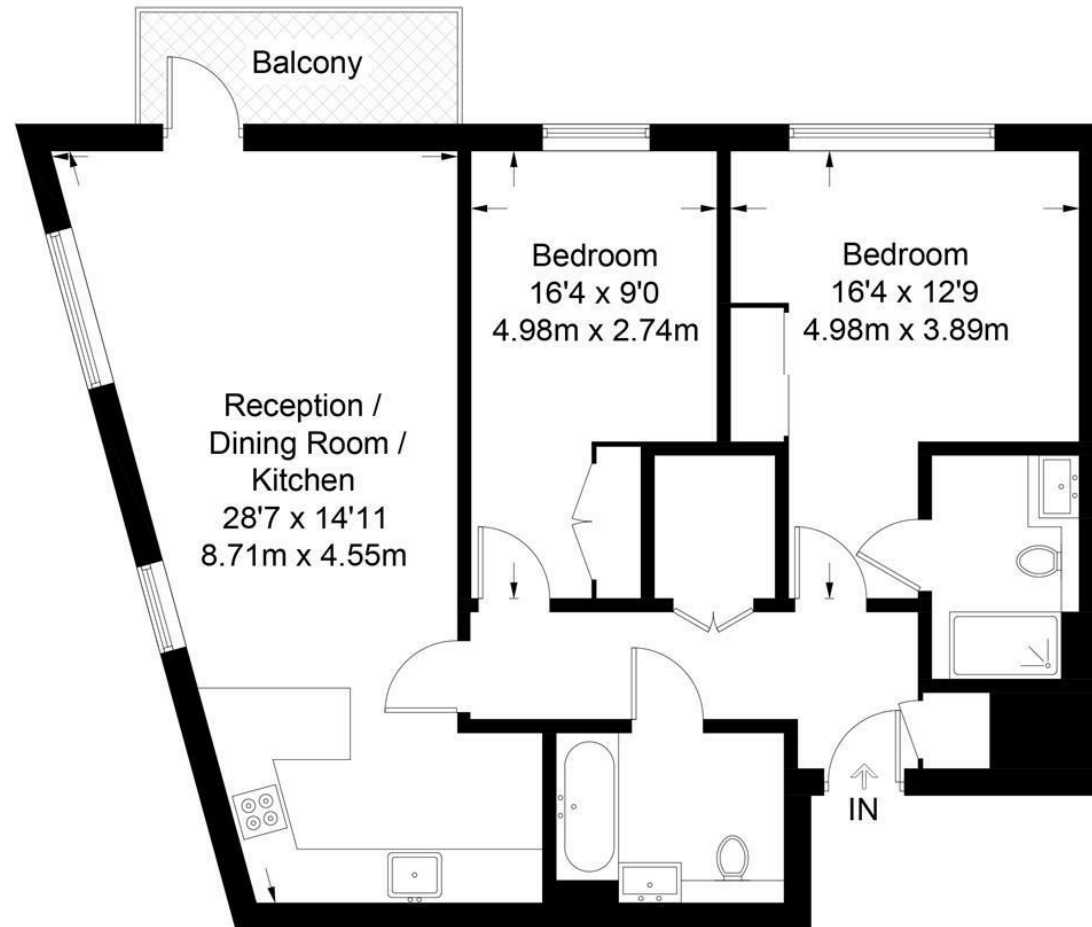
- 886 Sq.ft (82.3 Sq.m)
- 2 Double Bedrooms, 2 Luxury Bathrooms (1 En-Suite)
- Dual Aspect Open Plan Reception Room
- Kitchen with Miele Integrated Appliances
- Large Private Terrace
- Private Balcony
- 24 Hour Concierge
- Residents Gym with Spa Facilities & Indoor Swimming Pool
- Moments From Chelsea Harbour & Imperial Wharf Station
- EPC - C (80)



EPC certificate available on request.

## Lockside House

Approximate Gross Internal Area = 886 sq ft / 82.3 sq m



### Third Floor

Not to scale, for guidance only and must not be relied upon as a statement of fact.  
All measurements and areas are approximate only and have been prepared in accordance with the current edition of the RICS Code of Measuring Practice.



