



Westwood House, Fulham
London SW6

GARTON JONES.COM



Westwood House, Fulham London, SW6

£1,495,000 Leasehold

BUILD COMPLETE - BOOK YOUR SHOW HOME VISIT of this stunning brand new luxurious two-bedroom apartment, 957sqft (88.89sqm) situated on the 2nd Floor of this brand-new phase within the highly desirable Chelsea Creek development SW6. The bright and contemporary apartment benefits from a modern open plan living area with a stylish kitchen & integrated appliance's, Two Balconies both offering views of the restful canal waterways and tree-lined promenades. The two bedrooms both benefit from fitted wardrobes as well as the master offering an ensuite, there is also a guest bathroom and ample storage throughout. Chelsea Creek is located a short distance from the famous Kings Road the gardens of Chelsea Creek have been exquisitely landscaped to create space for calm contemplation, showcasing the priority for wellbeing and environmental quality that flows throughout Chelsea Creek. The Development boasts luxury wellness amenities and concierge services onsite, to cater to your every lifestyle need. With a 24-hour concierge service and an on-site team to take care of management and security, with exclusive access to residents for The Spa and Fitness centre - with swimming pool, sauna, steam room, treatment room and gymnasium or relax and unwind while watching the latest movie in the deluxe Cinema room or roof top terrace.

* Library photographs used of similar design and specification
*

Service Charges - Approx. £6.29 per sq.ft
Ground Rent - Peppercorn
Lease 999 years from 2010
Council Tax — Hammersmith & Fulham — Band F

EPC - B (84)

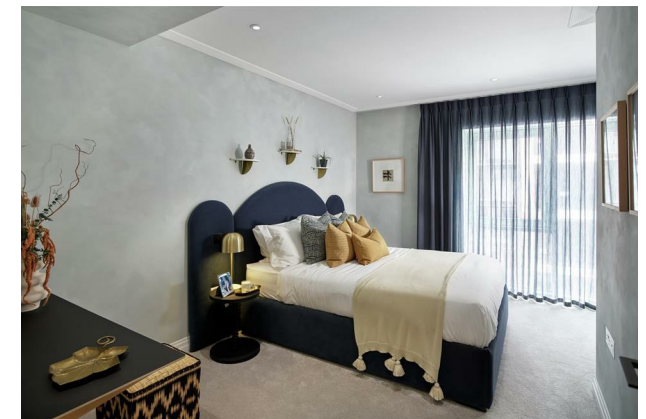
EPC certificate available on request.

GARTON JONES.COM

11 Park Street
Chelsea Creek
London
SW6 2FS

Sales +44 (0) 20 7824 7090
paul@gartonjones.com
www.gartonjones.com

- Located On The 2nd Floor (With Lift)
- Two Balconies Offering Views Of The Restful Canal Waterways & Tree-Lined Promenades
- Two Bedroom / Two Bathroom
- Stunning Brand New Apartment
- 957 Sq.ft (88.89 Sq.m)
- Open Plan Living
- Desirable Dockside Apartment
- Exclusive Access To The Spa With Swimming Pool, Sauna, Steam Room, Treatment Room & Gym
- Residents Lounge, Private Cinema & Roof Terrace, Located In The Imperial
- EPC Rating B (84)



GARTON JONES.COM



