



Rock Estates



Horsepond Place, Needham Market, IP6 8FS

Offers in excess of £290,000



Horsepond Place, Needham Market, IP6 8FS.

Rarely available detached, two bedroom home situated in the heart of Needham Market.

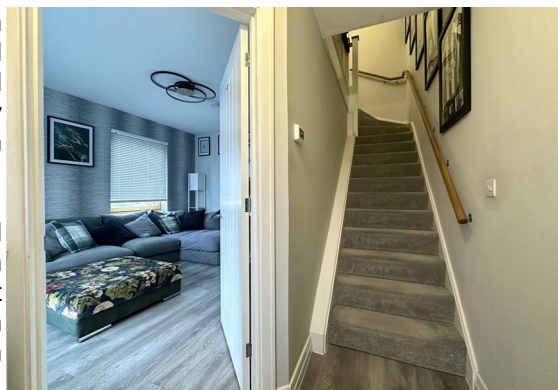
A well-presented modern home, benefiting from off-road parking, an EV charging point, and a south-west facing garden. Conveniently located within easy reach of local amenities, including a Co-op supermarket, playing fields, and Bosmere Primary School, with excellent access to the A14.

Upon entering, the reception hall provides access to the sitting room, which features dual-aspect windows and sliding pocket doors leading to the modern kitchen. The kitchen is well-equipped with a range of base and eye-level units, integrated appliances (fridge/freezer, dishwasher, oven, and electric hob with extractor). A utility cupboard offers space for a washing machine and additional storage, while a cloakroom completes the ground floor. Upstairs, the landing leads to two well-proportioned bedrooms. The main bedroom overlooks the rear garden and includes fitted wardrobes and a stylish en-suite. The second bedroom, positioned at the front, is serviced by a family bathroom featuring a bath with an overhead shower.

The front of the property boasts a block-paved driveway with parking for two cars and an electric vehicle charging point. The south-west facing rear garden is primarily laid to lawn, with a patio area ideal for entertaining or relaxing in the sun.

This delightful home offers a fantastic location, modern features, and excellent convenience—an ideal choice for professionals or those looking to downsize.

Viewings highly recommended.





Entrance Hall

Oak effect vinyl tile floor. Stairs to first floor. Door to:

Living Room

16'2" x 11'4" (4.94 x 3.47)

Dual aspect double glazed windows. Oak effect vinyl tile floor. Under floor heating. Sliding pocket doors open to:

Kitchen/Diner

12'8" x 11'3" (3.87 x 3.43)

Double glazed sliding doors to rear garden. Oak effect vinyl tile floor. Range of wall and floor mounted units. Integrated fridge/freezer. Integrated oven and electric hob with extractor hood over. Integrated dishwasher. Inset sink with mixer tap over. Spotlights. Under floor heating. Doors to:

Inner Hall

Door to under stairs cupboard. Door to:

Cloakroom

Oak effect vinyl flooring. Wall mounted hand wash basin with tiled splash back. Low level W.C.

Utility Cupboard

Space for washing machine. Worktop space. Wall mounted gas boiler.

Landing

Doors to:

Bedroom One

13'0" x 10'1" (3.97 x 3.09)

Double glazed window to rear. Built in wardrobe with sliding doors. Radiator. Door to:

Ensuite

Shower cubicle with dual shower controls including rainfall shower head. Low level W.C. Pedestal hand wash basin with tiled splash back. Electric shaver point. Chrome heated towel rail. Spotlights. Extractor fan.

Bedroom Two

15'1" x 8'5" (4.60 x 2.59)

Two double glazed windows. Radiator.

Bathroom

Double glazed window to side. Panelled bath with shower over. Chrome fixtures. Low level W.C. Pedestal hand wash basin with tiled splash back. Part tiled walls. Extractor fan. Wall mounted electric shaver point. Spotlights. Chrome heated towel rail.

Garden

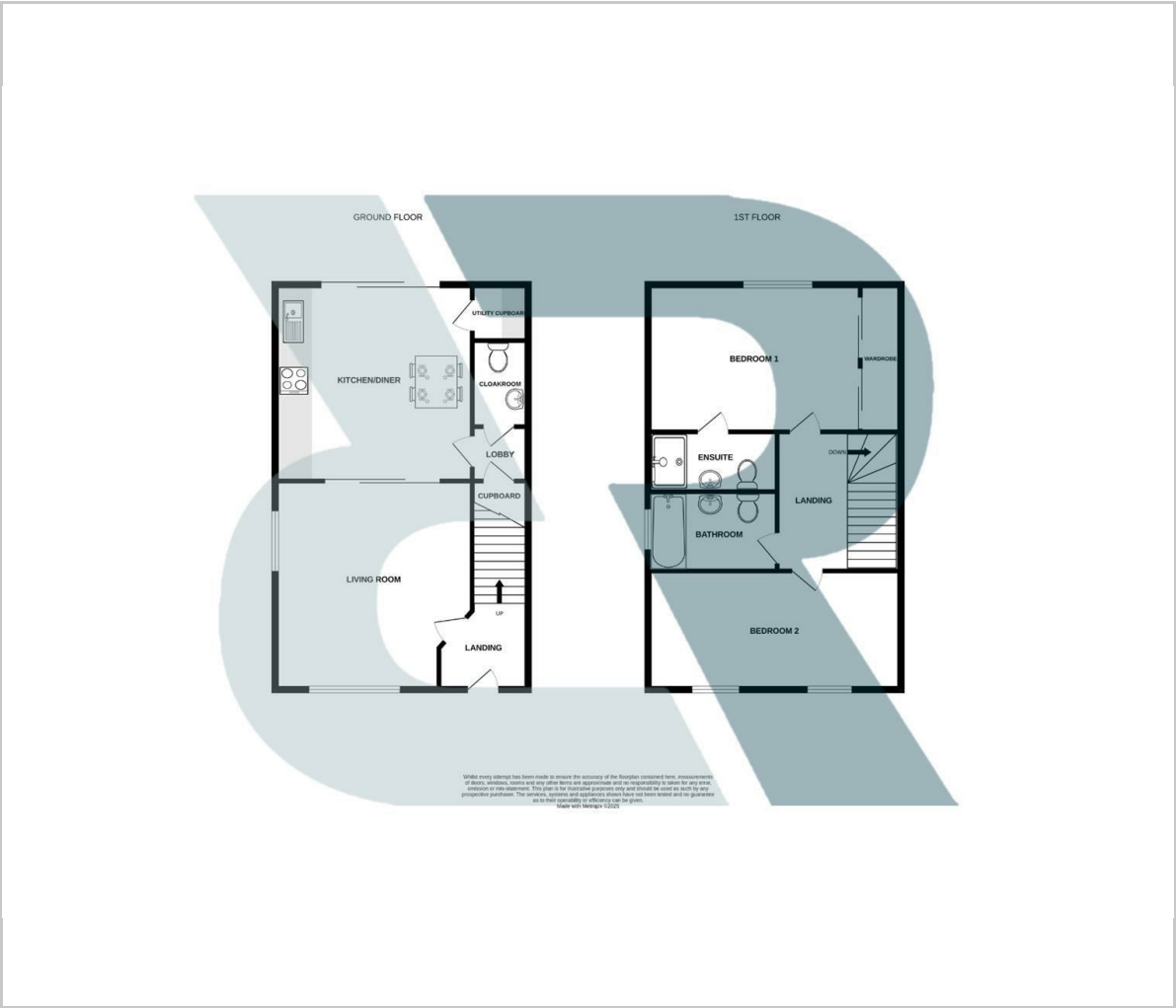
The rear garden is fully enclosed with wooden fencing with a gate to the side providing access to the driveway. The garden is predominantly laid to lawn and benefits from a paved patio area along with a wooden shed and outside tap and light.

Parking

Driveway to side of the property for 2 vehicles.



Floor Plan



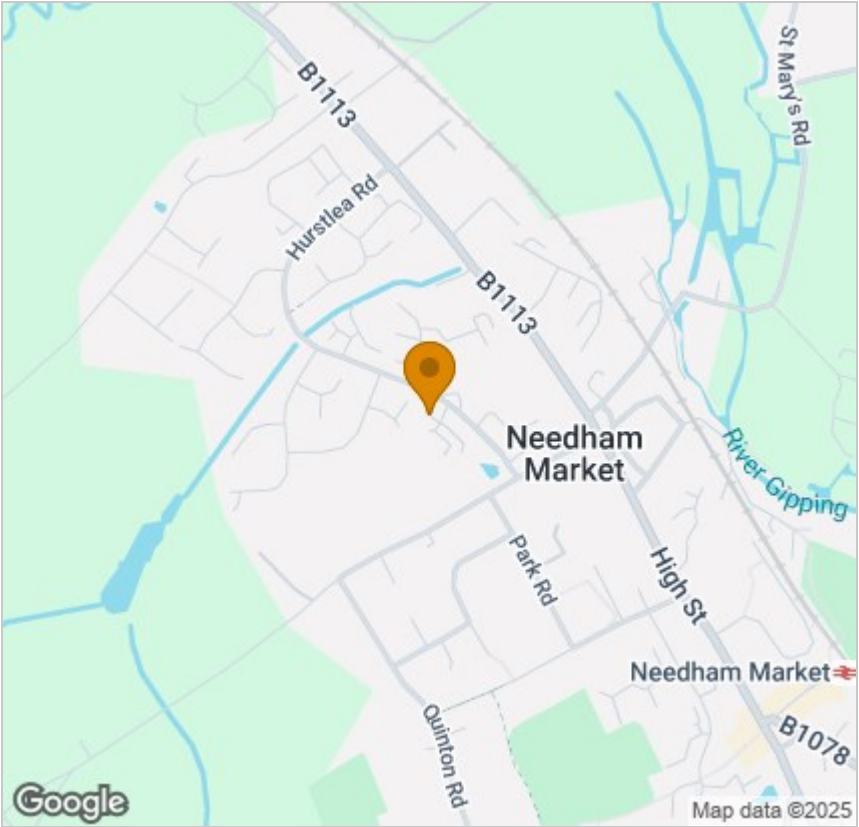
Viewing

Please contact our Rock Estates Office on 01449 723441 if you wish to arrange a viewing appointment for this property or require further information.

These particulars, whilst believed to be accurate are set out as a general outline only for guidance and do not constitute any part of an offer or contract. Intending purchasers should not rely on them as statements of representation of fact, but must satisfy themselves by inspection or otherwise as to their accuracy. No person in this firms employment has the authority to make or give any representation or warranty in respect of the property.

Rock Estates Suffolk Ltd, Unit 3 Chesters, Coddham Road,, Needham Market, Suffolk, IP6 8NU
Tel: 01449 723441 Email: info@estatesrock.co.uk www.rrea.co.uk

Area Map



Energy Efficiency Graph

