



Rock Estates



1 Blyth Mews Stowmarket Road, Ipswich, IP6 8RS £300,000

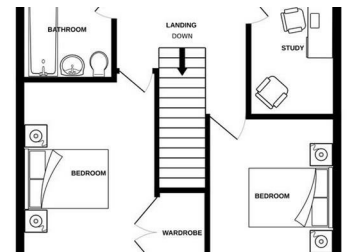
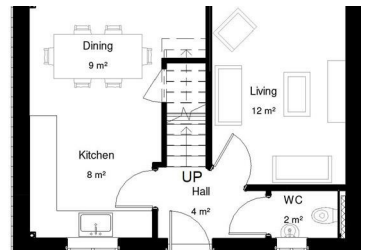


** COMING SOON – APRIL 2024 **

A unique opportunity to own one of these prestigious properties situated on a small development on the riverside in the Suffolk village of Badley. The Woodlands is an exclusive development of just five properties all with views across the River Gipping.

A collection of meticulously crafted, high specification properties designed by Stacey Marie Homes, including a detached four bedroom house, three bedroom chalet, detached three bedroom house, and a pair of semi-detached two bedroom houses all with unique riverside gardens.

Generously proportioned downstairs accommodation with a spacious kitchen/diner with dual aspect windows to the front and rear. A downstairs



- ** COMING SOON – APRIL 2024 **
- Underfloor Heating
- Off Road Parking For Two Vehicles
- First Floor Separate Study Ideal For Home Working
- Exclusive Secluded Development
- Two Double Bedroom Semi-Detached Home
- Large Corner Plot Overlooking The River Gipping
- Spacious Open Plan Kitchen/Diner
- Be The Envy Of Your Friends With This Ideal First Time Buy
- Downstairs Cloakroom