



Rock Estates



## Gipping Lodge Stowmarket Road, Ipswich, IP6 8RS £495,000

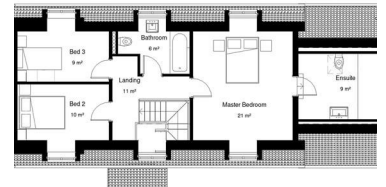
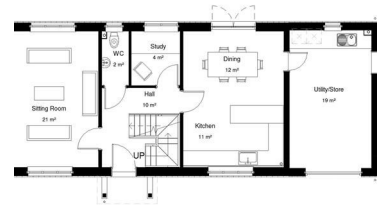


\*\* COMING SOON – APRIL 2024 \*\*

A unique opportunity to own one of these prestigious properties situated on a small development on the riverside in the Suffolk village of Badley. The Woodlands name yet to be officially registered is an exclusive development of just five properties all with views across the River Gipping.

A collection of meticulously crafted, high specification properties designed by Stacey Marie Homes, including a detached four bedroom house, three bedroom chalet bungalow, detached three bedroom house, and a pair of semi-detached two bedroom houses all with unique riverside gardens.

The downstairs living accommodation benefits from having under floor heating. This charming detached chalet provides multiple reception rooms



- \*\* COMING SOON – APRIL 2024 \*\*
- Three Generous Bedrooms
- Spacious Living Room With Feature Log burner
- Integral Single Garage With Utility Area
- Separate Study
- Prestigious Detached Chalet
- Underfloor Heating
- Range Cooker
- Impressive Ensuite To Principle Bedroom
- Open Plan Kitchen/Diner