



4 Bolbury Crescent, Swinton, M27 8AX

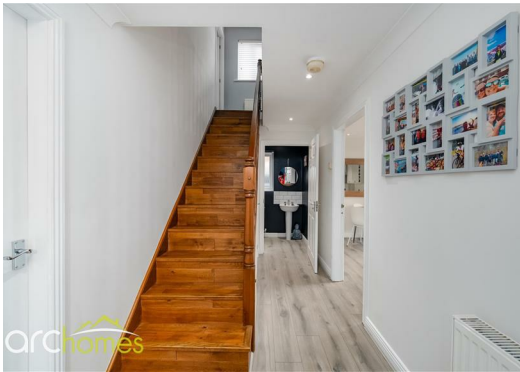
Offers over £350,000

ARC HOMES are delighted to offer FOR SALE this absolutely gorgeous three bedroom detached property positioned within the very sought after Agecroft Hall development in Swinton. This beautiful home is a true credit to the current owner boasting generous accommodation together with well designed rear gardens, parking and detached gymnasium / outbuilding. Ideal for a range of buyers, early viewing is highly advised to avoid missing out on this fabulous home. Entry is via a welcoming entrance hallway which provides access too a handy downstairs cloakroom and fantastic well proportioned sitting room. To the side is a beautiful modern kitchen dining room with French doors opening to the rear gardens. To the first floor are three excellent bedrooms and modern bathroom. The master bedroom benefits from a lovely en suite shower room. Outside, double gates to the side provide off road parking, with enough parking for 2 vehicles. The enclosed rear gardens are low maintenance, well presented and lead to the fantastic outbuilding which is currently being utilised as a gymnasium by the current owners, this also benefits from a newly installed heat pump providing heat and air conditioning.



Energy Efficiency Rating		
	Current	Potential
Very energy efficient - lower running costs		
(92 plus) A		
(81-91) B		
(69-80) C		
(55-68) D		
(39-54) E		
(21-38) F		
(1-20) G		
Not energy efficient - higher running costs		
England & Wales		EU Directive 2002/91/EC

Environmental Impact (CO ₂) Rating		
	Current	Potential
Very environmentally friendly - lower CO ₂ emissions		
(92 plus) A		
(81-91) B		
(69-80) C		
(55-68) D		
(39-54) E		
(21-38) F		
(1-20) G		
Not environmentally friendly - higher CO ₂ emissions		
England & Wales		EU Directive 2002/91/EC



30 Bolton Old Road, Atherton, M46 9DL

T. 01942 363599
info@arc-homes.net

