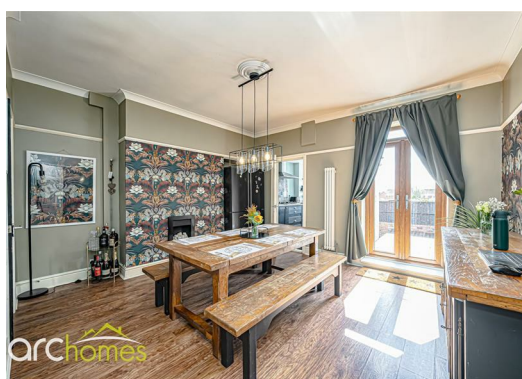




## 1 Sycamore Road, Atherton, M46 9DZ

Offers over £190,000

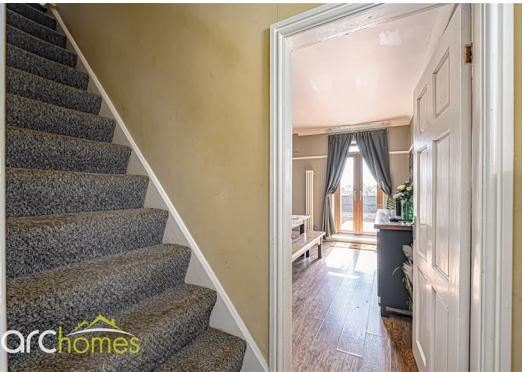
ARC HOMES are delighted to offer FOR SALE this gorgeous larger than average three double bedroom end terraced positioned within a sought after location and backing onto playing fields. This beautiful home offers generous accommodation over three floors and is positioned within close proximity of Atherton Train Station and sought after schools. Ideal for a range of buyers, early viewing is highly advised. Entry is via an entrance vestibule which leads into a well proportioned sitting room. A fantastic separate dining room has French doors which open into the rear gardens. A lovely modern refitted kitchen complete with appliances completes the ground floor. To the first floor are two excellent double bedrooms and a modern shower room. Stairs rise to the second floor to a very generous master bedroom which boasts an en suite shower room. Outside, both front and rear gardens are enclosed and low maintenance. The encased rear gardens back onto playing fields providing a good degree of privacy.





Energy Efficiency Rating		
	Current	Potential
Very energy efficient - lower running costs		
(92 plus) <b>A</b>		
(81-91) <b>B</b>		
(69-80) <b>C</b>		
(55-68) <b>D</b>		
(39-54) <b>E</b>		
(21-38) <b>F</b>		
(1-20) <b>G</b>		
Not energy efficient - higher running costs		
England & Wales		EU Directive 2002/91/EC 

Environmental Impact (CO <sub>2</sub> ) Rating		
	Current	Potential
Very environmentally friendly - lower CO2 emissions		
(92 plus) <b>A</b>		
(81-91) <b>B</b>		
(69-80) <b>C</b>		
(55-68) <b>D</b>		
(39-54) <b>E</b>		
(21-38) <b>F</b>		
(1-20) <b>G</b>		
Not environmentally friendly - higher CO2 emissions		
England & Wales		EU Directive 2002/91/EC 



30 Bolton Old Road, Atherton, M46 9DL

T. 01942 363599  
info@arc-homes.net

