



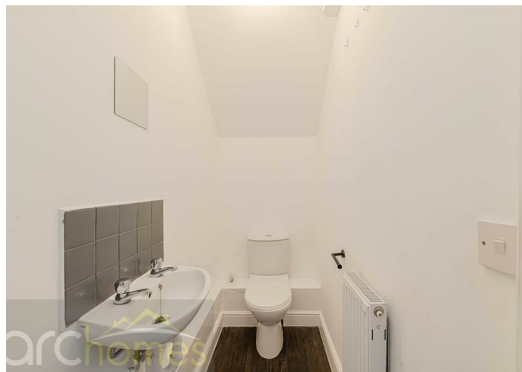
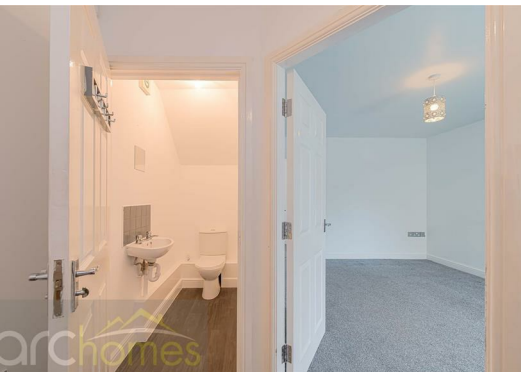
15 Kings Park, WN7 1UE Offers in excess of £245,000

ARC HOMES are delighted to offer FOR SALE this beautiful four bedroom town house positioned on Kings Park, a lovely modern development bordering Ather-Leigh and Howe Bridge. This fantastic home offers very generous accommodation over three floors, is well presented throughout and boasts off road parking for two vehicles. Ideal for a range of buyers, early viewing is highly advised to avoid missing out. Entry is via an entrance hallway which provides access into the handy downstairs cloakroom and well proportioned sitting room. An inner hallway, with stairs rising to the first floor, opens into the fantastic open plan kitchen family room complete with modern units and a glazed rear elevation looking into the rear gardens. To the first floor are three generous bedrooms and a modern family bathroom. The impressive master suite is located on the second floor and benefits from a modern en suite room. Outside, the property is positioned at the head of Kings Park looking up the street towards "Green Hill". To the rear is a generous enclosed rear gardens which is well presented and low maintenance. Allocated parking for two vehicles completes the package on offer.



Energy Efficiency Rating		
	Current	Potential
Very energy efficient - lower running costs		
(92 plus) A		
(81-91) B		
(69-80) C		
(55-68) D		
(39-54) E		
(21-38) F		
(1-20) G		
Not energy efficient - higher running costs		
England & Wales	EU Directive 2002/91/EC	

Environmental Impact (CO ₂) Rating		
	Current	Potential
Very environmentally friendly - lower CO ₂ emissions		
(92 plus) A		
(81-91) B		
(69-80) C		
(55-68) D		
(39-54) E		
(21-38) F		
(1-20) G		
Not environmentally friendly - higher CO ₂ emissions		
England & Wales	EU Directive 2002/91/EC	



30 Bolton Old Road, Atherton, M46 9DL

T. 01942 363599
info@arc-homes.net

