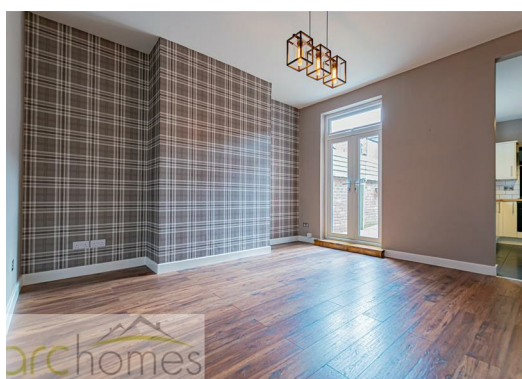




## 143 Gidlow Lane, Lancashire WN6 7EA

£875

ARC HOMES are delighted to offer TO LET this excellent and larger than average THREE BEDROOM mid terraced property situated within a popular location. This property is conveniently located within close proximity of Wigan Town Centre and its amenities offering well presented accommodation and available immediately. With two reception rooms, three generous bedrooms, modern kitchen and modern bathroom, early viewing is advised to avoid missing out.





Energy Efficiency Rating		
	Current	Potential
Very energy efficient - lower running costs		
(92 plus) <b>A</b>		
(81-91) <b>B</b>		
(69-80) <b>C</b>		
(55-68) <b>D</b>		
(39-54) <b>E</b>		
(21-38) <b>F</b>		
(1-20) <b>G</b>		
Not energy efficient - higher running costs		
England & Wales		EU Directive 2002/91/EC 

Environmental Impact (CO <sub>2</sub> ) Rating		
	Current	Potential
Very environmentally friendly - lower CO2 emissions		
(92 plus) <b>A</b>		
(81-91) <b>B</b>		
(69-80) <b>C</b>		
(55-68) <b>D</b>		
(39-54) <b>E</b>		
(21-38) <b>F</b>		
(1-20) <b>G</b>		
Not environmentally friendly - higher CO2 emissions		
England & Wales		EU Directive 2002/91/EC 



30 Bolton Old Road, Atherton, M46 9DL

T. 01942 363599  
info@arc-homes.net

