



**DM&Co.**  
— SALES & LETTINGS —

101 Kinton Green Road  
B92 7DT

Beautiful 4-Bedroom Family Home With Loads Of Character. Available July On An Unfurnished.



## DETAILS

This four bedroom detached home is offered on an unfurnished basis & is available now!

Upon entry is a welcoming hallway, downstairs W.C, two large reception rooms with feature fireplaces, spacious kitchen/ family room, pantry & utility room.

To the first floor is four good sized double bedrooms, master bedroom benefits from en suite & a modern fitted family bathroom.

Solihull Council - Tax Band G



## OUTSIDE

Sweeping driveway for at least three vehicles & a garage perfect for storage.

The large rear garden is mainly lawn & is a spectacular space to enjoy our British summer weather.

## VIEWINGS

At short notice with DM & Co. Homes on  
0121 775 0101 or by email  
[lettings@dmandcohomes.co.uk](mailto:lettings@dmandcohomes.co.uk)



## **OTHER SERVICES**

DM & Co are pleased to offer the following services:-

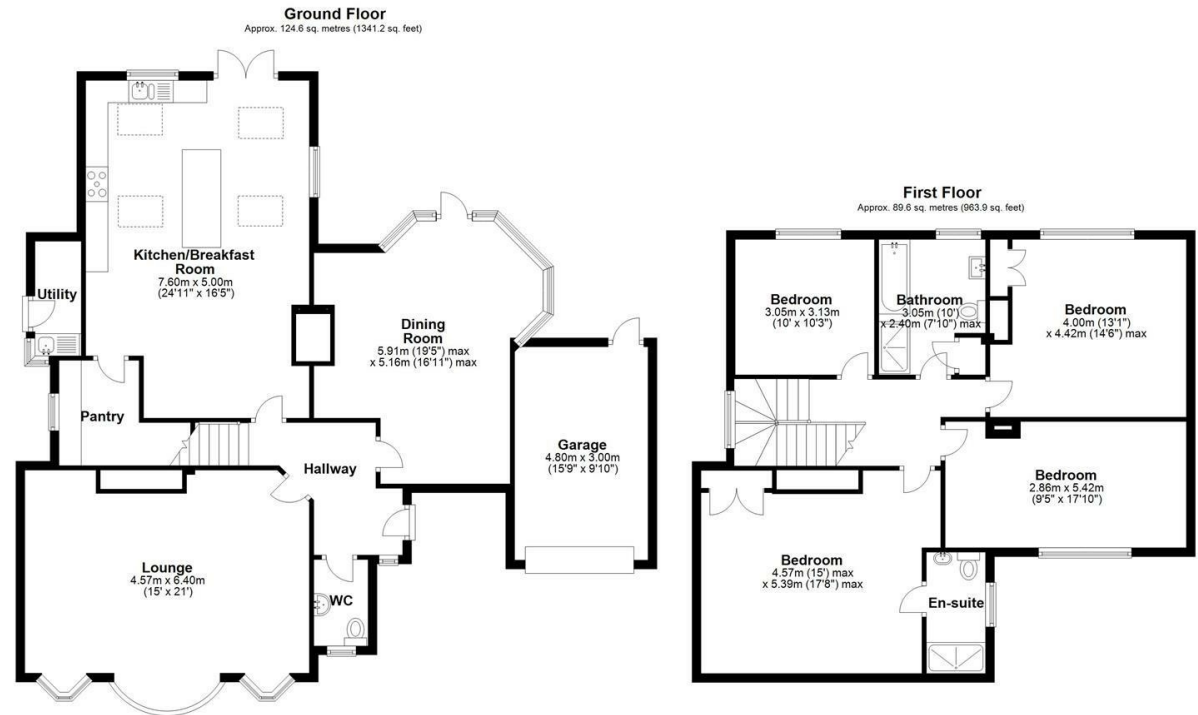
**Residential Lettings:** If you are considering letting your property, please contact the office on 0121 775 0101.

**Mortgage Services:** If you would like advice on the best mortgages available, please contact us on 0121 775 0101.

**Agents Note:** Whilst every care has been taken to prepare these sales particulars, they are for guidance purposes only. All measurements are approximate and are for general guidance purposes only and whilst every care has been taken to ensure their accuracy, they should not be relied upon and potential buyers are advised to recheck the measurements.

## FEATURES

- Four Bedroom Detached Home
- Two Reception Rooms
- Open Plan/Kitchen Diner
- 4 Double Bedrooms
- Large Rear Garden
- Walking Distance To Olton Train Station
- Offered Unfurnished
- Holding Deposit - £576.00
- Security Deposit - £2884.61
- Available Early July



Total area: approx. 214.2 sq. metres (2305.2 sq. feet)

This floor plan is for illustration purposes only, this is not intended to be a measured/scaled survey or comply with RICS guidelines. All measurements (including total floor area) openings, orientation and floor area and are approximate. No details are guaranteed, they cannot be relied upon for any purpose and do not form part of any agreement. A party must rely upon its own inspection(s). No responsibility is taken for any error, omission, or mis-statement.  
Plan produced using PlanUp.

## VIEWING

Book a viewing with Sole Agents DM & Co.  
Premium by phone or email:

📞 0121 775 0101

@ lettings@dmandcohomes.co.uk

Agents Note: Whilst every care has been taken to prepare these sales particulars, they are for guidance purposes only. All measurements are approximate and are for general guidance purposes only and whilst every care has been taken to ensure their accuracy, they should not be relied upon and potential buyers are advised to recheck the measurements

| Energy Efficiency Rating                    |  | Current                 | Potential |
|---|--|-------------------------|-----------|
| Very energy efficient - lower running costs |  |                         |           |
| (92 plus) A                                 |  |                         |           |
| (81-91) B                                   |  |                         |           |
| (69-80) C                                   |  |                         |           |
| (55-68) D                                   |  |                         |           |
| (39-54) E                                   |  |                         |           |
| (21-38) F                                   |  |                         |           |
| (1-20) G                                    |  |                         |           |
| Not energy efficient - higher running costs |  |                         |           |
|   |  | 58                      | 80        |
| England & Wales                             |  | EU Directive 2002/91/EC |           |

| Environmental Impact (CO <sub>2</sub> ) Rating                  |  | Current                 | Potential |
|---|--|-------------------------|-----------|
| Very environmentally friendly - lower CO <sub>2</sub> emissions |  |                         |           |
| (92 plus) A   |  |                         |           |
| (81-91) B   |  |                         |           |
| (69-80) C   |  |                         |           |
| (55-68) D   |  |                         |           |
| (39-54) E   |  |                         |           |
| (21-38) F   |  |                         |           |
| (1-20) G  |  |                         |           |
| Not environmentally friendly - higher CO <sub>2</sub> emissions |  |                         |           |
| England & Wales   |  | EU Directive 2002/91/EC |           |