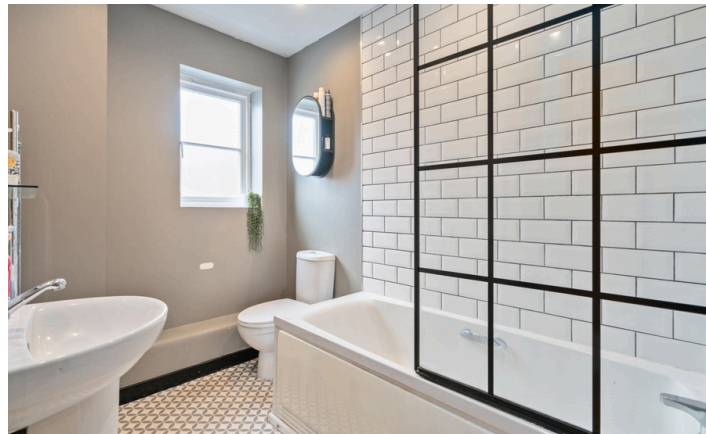


Need a Mortgage in principle to make offers? Call us now for quick assistance!
0121 775 0101



Do you need to sell? Start your journey now! Call us we can help.
01564 777 314



Willams James Drive

Offers in excess of £170,000

This one bedroom Coach House has been completely refurbished and is beautifully presented throughout. Ideally located just off the High Street in the heart of Henley-In-Arden village. Being just a few minutes walk from local amenities, this property is perfect for first time buyers, downsizers or investors.

FEATURES

- Stunning One Bedroom Coach House
- Open Plan Living/Dining/Kitchen
- Double Bedroom
- Modern Bathroom
- Countryside Views
- Secure Gated Parking for one car
- Outside Storage
- High Street location
- Close to Transport links and Train Station
- On the doorstep for all local amenities



SCAN FOR MORE INFO

SIZE - 574 Sq Ft
TENURE - Leasehold
COUNCIL TAX - Stratford Upon Avon District Council B
BROADBAND - Upload 20 Mbps
 Download 80 Mbps
MOBILE - EE, Three, O2, Vodafone
EPC - C
PARKING - Secure gated parking with one allocated space
FLOODRISK - Medium
SERVICES - Mains
COVENANTS - N/A

Are you an investor interested in expanding your portfolio?

Call 01564 777 314 to provide your investment criteria for alerts.

Sneak Peeks

Every week, we unveil "Sneak Peeks," a feature showcasing exclusive properties before they hit Rightmove and other platforms.

The Landlord Club

Join our Landlord Club for weekly updates on legislation, market trends, and our Letting Director's 'Investment Pick of the Week' for optimal ROI.

HTSPMD

Tune into 'How's The Solihull Property Market Dom' weekly for a quick, insightful snapshot of the market.

The Mortgage Update

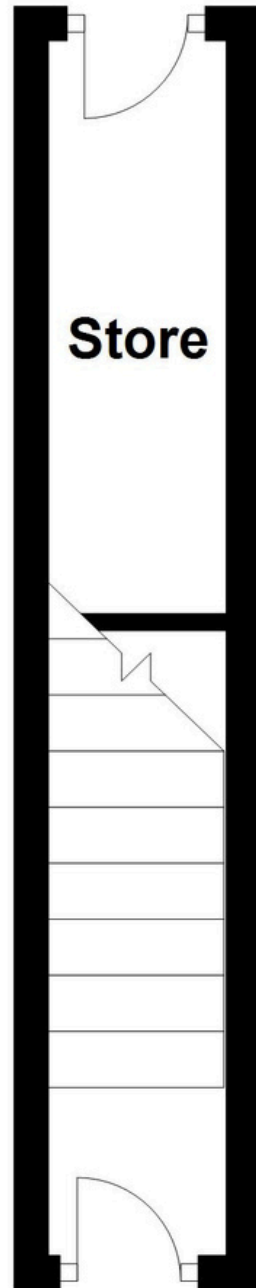
Get weekly insights and the best deals with our Mortgage Update, your shortcut to navigating the complex mortgage landscape confidently.



SCAN TO VIEW OUR WEEKLY FILMS & SUBSCRIBE

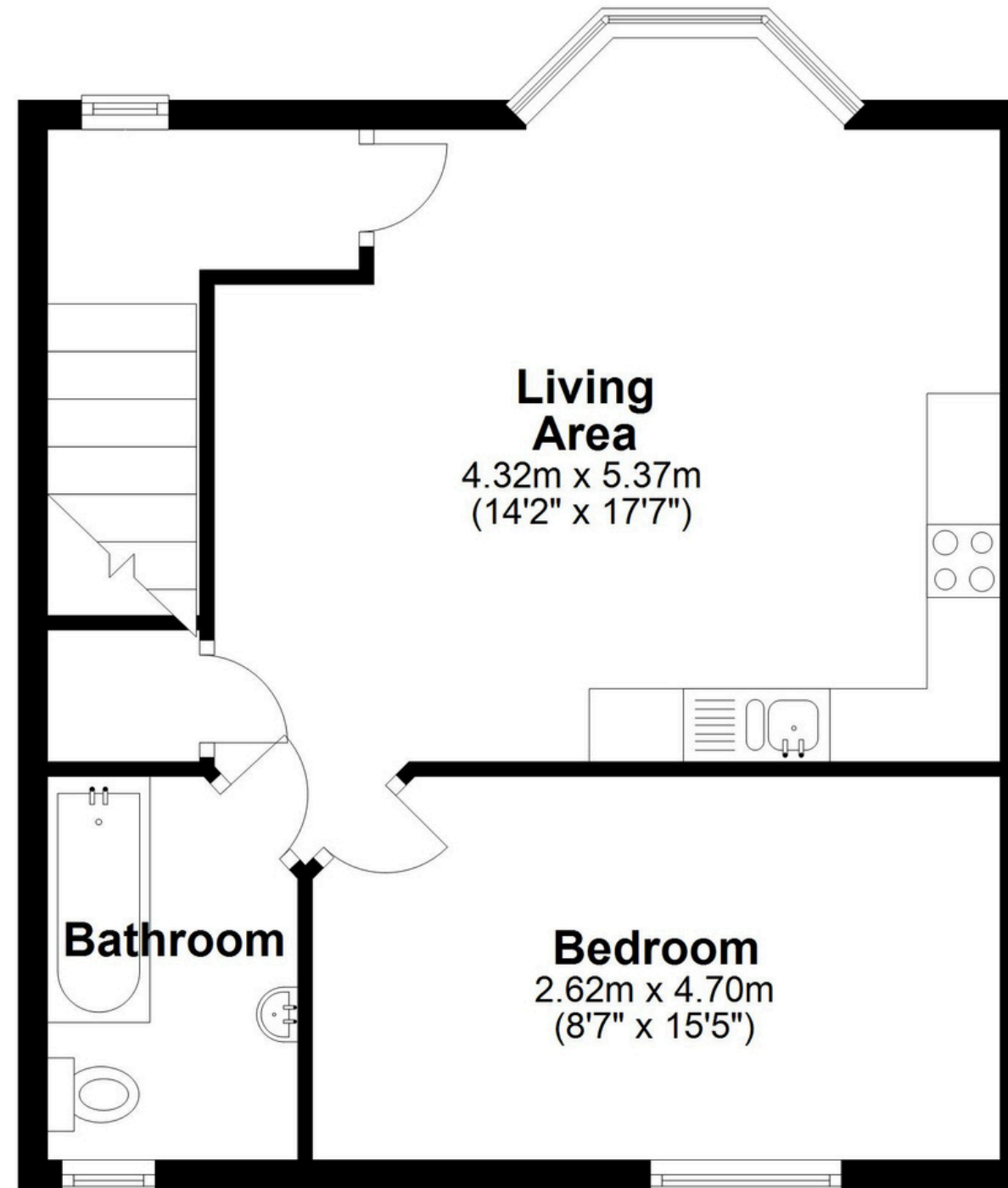
Ground Floor

Approx. 7.3 sq. metres (78.1 sq. feet)



First Floor

Approx. 46.1 sq. metres (496.6 sq. feet)



Total area: approx. 53.4 sq. metres (574.7 sq. feet)

This floor plan is for illustration purposes only, this is not intended to be a measured/scaled survey or comply with RICS guidelines. All measurements (including total floor area) openings, orientation and floor area are approximate. No details are guaranteed, they cannot be relied upon for any purpose and do not form part of any agreement. A party must rely upon its own inspection(s). No responsibility is taken for any error, omission, or mis-statement.

Plan produced using PlanUp.