

Need a Mortgage in principle to make offers? Call us now for quick assistance!
0121 775 0101



Do you need to sell? Start your journey now! Call us we can help.
01564 777 314



SCAN FOR MORE INFO
SIZE - 1043 Sq Ft
TENURE - Freehold
COUNCIL TAX - Stratford Upon Avon District Council - E
BROADBAND - Upload Max 220 Mbps
Download Max 1000 Mbps
MOBILE - EE Three O2 Vodafone
EPC - D
PARKING - Garage and Driveway Parking
FLOODRISK - Very Low
SERVICES - Mains
COVENANTS - N/A

Mayfield Drive, Henley in Arden

Purchase Price of £450,000

A detached two bedroom bungalow, in need of updating which is conveniently located at the end of a cul-de-sac, behind the historic Henley-in-Arden High Street, perfect for those who wish to be just a short stroll away from all the amenities on offer, including the train station and sought after local schools.

FEATURES

- Detached Two Bedroom Bungalow
- Large Living Room/Diner
- Breakfast Kitchen
- Easily Maintained Southern Aspect Garden
- Garage and Driveway
- Sought After Location
- Short Walk to Henley in Arden
- No Upward Chain

Are you an investor interested in expanding your portfolio?

Call 01564 777 314 to provide your investment criteria for alerts.



Sneak Peeks

Every week, we unveil "Sneak Peeks," a feature showcasing exclusive properties before they hit Rightmove and other platforms.

HTSPMD

Tune into 'How's The Solihull Property Market Dom' weekly for a quick, insightful snapshot of the market.

The Landlord Club

Join our Landlord Club for weekly updates on legislation, market trends, and our Letting Director's 'Investment Pick of the Week' for optimal ROI.

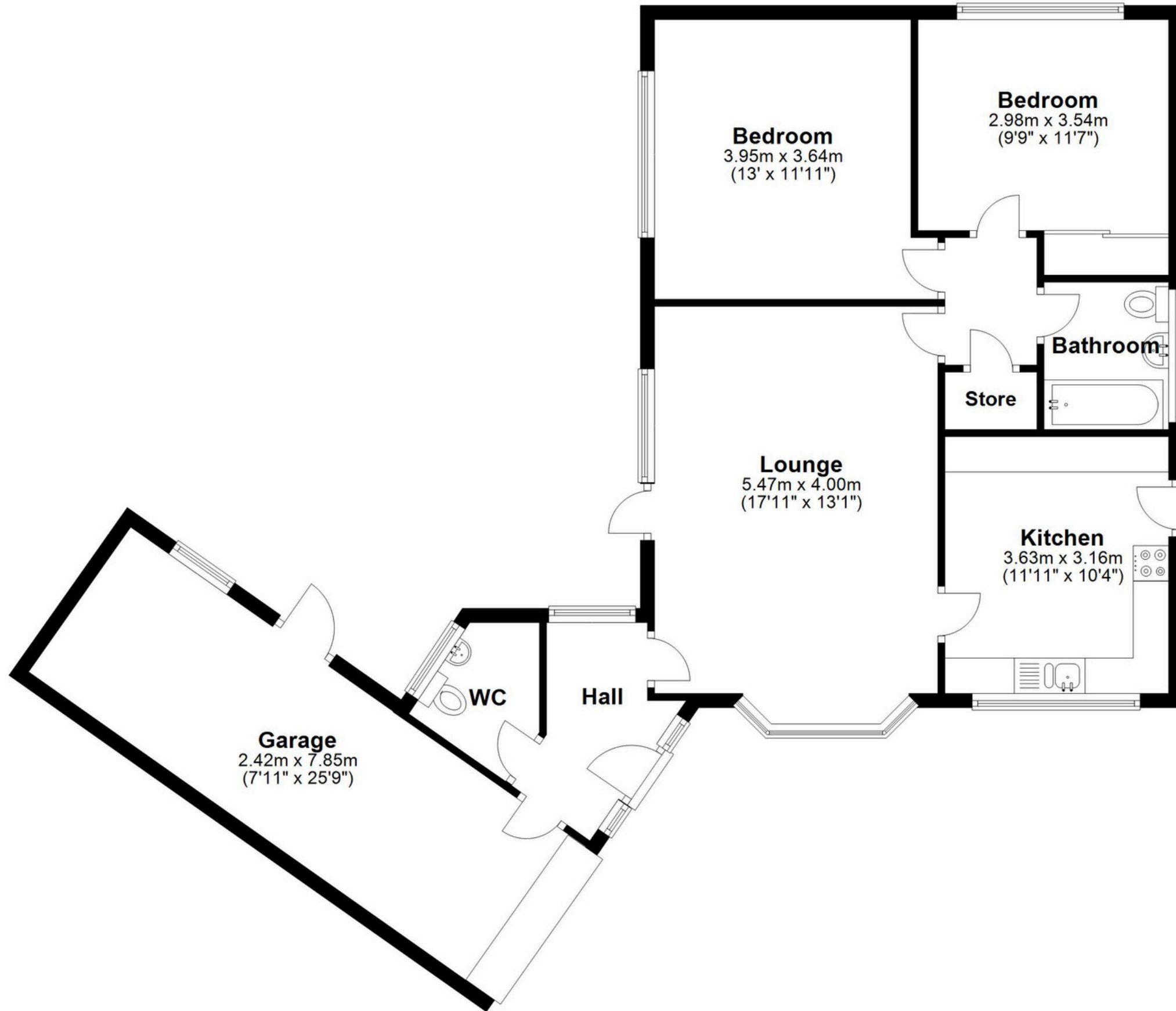
The Mortgage Update

Get weekly insights and the best deals with our Mortgage Update, your shortcut to navigating the complex mortgage landscape confidently.

SCAN TO VIEW OUR WEEKLY FILMS & SUBSCRIBE

Floor Plan

Approx. 96.9 sq. metres (1043.5 sq. feet)



Total area: approx. 96.9 sq. metres (1043.5 sq. feet)

This floor plan is for illustration purposes only, this is not intended to be a measured/scaled survey or comply with RICS guidelines. All measurements (including total floor area) openings, orientation and floor area are approximate. No details are guaranteed, they cannot be relied upon for any purpose and do not form part of any agreement. A party must rely upon its own inspection(s). No responsibility is taken for any error, omission, or mis-statement.

Plan produced using PlanUp.