

Need a Mortgage in principle to make offers? Call us now for quick assistance!  
0121 775 0101



Do you need to sell? Start your journey now! Call us we can help.  
01564 777 314



## Warwick Road, Knowle

Guide Price of £550,000

**SCAN FOR MORE INFO**  
**SIZE** - 1102 Sq Ft  
**TENURE** - Freehold  
**COUNCIL TAX** - Solihull MBC - E  
**BROADBAND** - Upload Max 1000 Mbps  
 Download Max 1000 Mbps  
**MOBILE** - EE Three O2 Vodafone  
**EPC** - E  
**PARKING** - Driveway Parking  
**FLOODRISK** - Very Low  
**SERVICES** - Mains  
**COVENANTS** - N/A

A cottage-style three-bedroom end terrace house with picturesque views of Copt Heath Golf Course's 17th hole. This beautifully presented home is perfectly located within walking distance to local amenities and within the Arden Academy catchment. Featuring a tranquil garden and private driveway, this is a must-see property.

### FEATURES

- Cottage Style Three Bedroom End Terrace House
- Coty Living Room
- Open Plan Kitchen/Diner with Patio Doors
- Second Bedroom with Balcony
- Main Bathroom with Roll Top Bath
- Private Driveway for At Least Two Cars
- Private Garden with Sumer House
- Walking Distance to Local Amenities
- Within Arden Academy Catchment
- No Upward Chain

Are you an investor interested in expanding your portfolio?

Call 01564 777 314 to provide your investment criteria for alerts.

### Sneak Peeks

Every week, we unveil "Sneak Peeks," a feature showcasing exclusive properties before they hit Rightmove and other platforms.

### HTSPMD

Tune into 'How's The Solihull Property Market Dom' weekly for a quick, insightful snapshot of the market.

### The Landlord Club

Join our Landlord Club for weekly updates on legislation, market trends, and our Letting Director's 'Investment Pick of the Week' for optimal ROI.

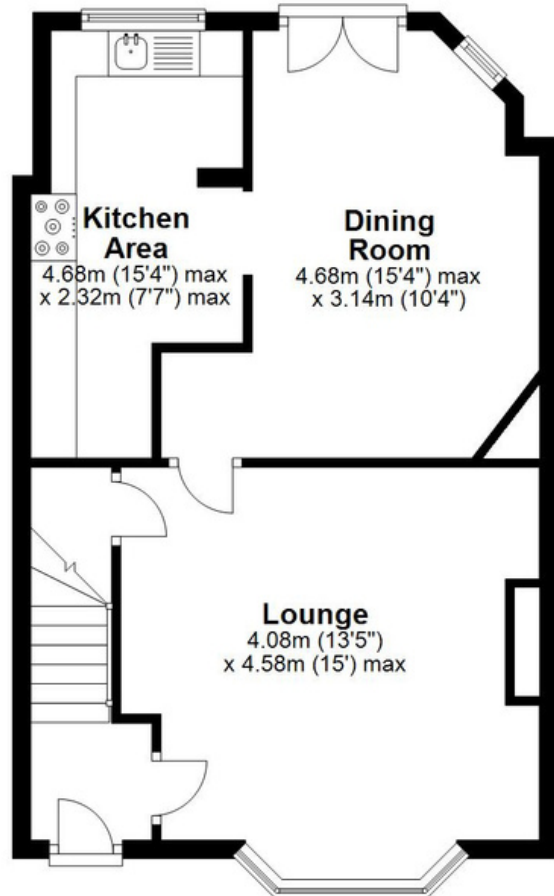
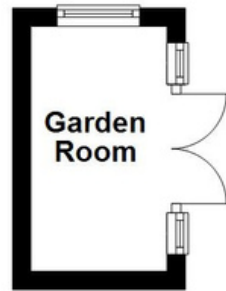
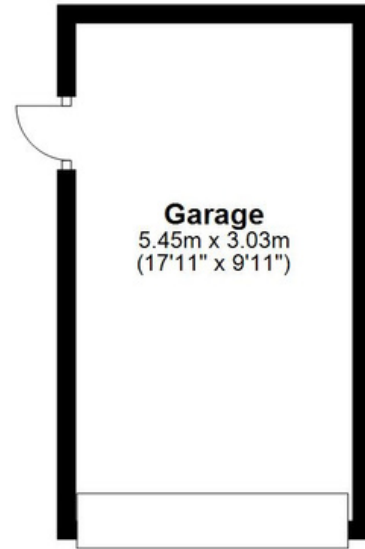
### The Mortgage Update

Get weekly insights and the best deals with our Mortgage Update, your shortcut to navigating the complex mortgage landscape confidently.



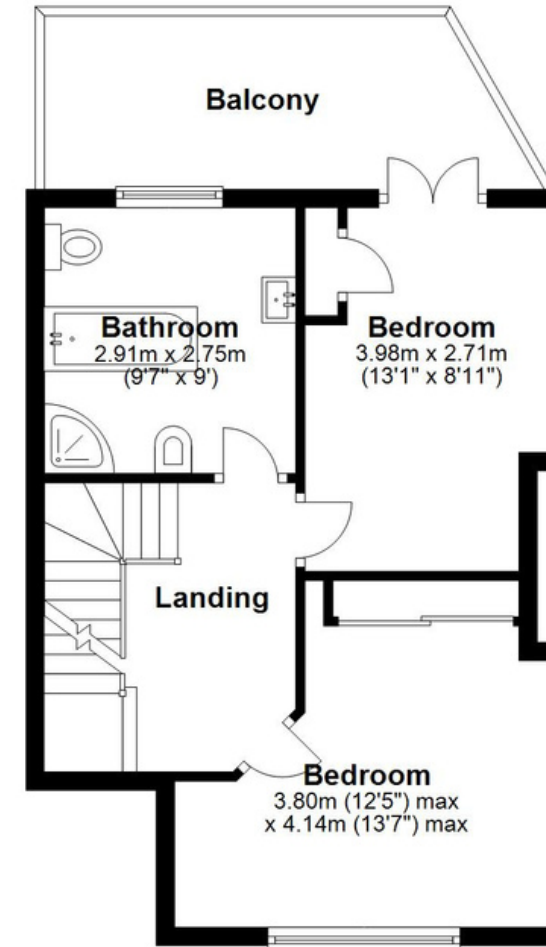
SCAN TO VIEW OUR WEEKLY FILMS & SUBSCRIBE

**Ground Floor**  
 Main area: approx. 48.5 sq. metres (521.7 sq. feet)  
 Plus garages, approx. 16.5 sq. metres (177.9 sq. feet)  
 Plus outbuildings, approx. 4.0 sq. metres (43.0 sq. feet)



**Main area: Approx. 102.4 sq. metres (1102.7 sq. feet)**  
 Plus garages, approx. 16.5 sq. metres (177.9 sq. feet)  
 Plus outbuildings, approx. 4.0 sq. metres (43.0 sq. feet)

**First Floor**  
 Approx. 40.5 sq. metres (436.5 sq. feet)



**Second Floor**  
 Approx. 13.4 sq. metres (144.6 sq. feet)

