

Need a Mortgage in principle to make offers? Call us now for quick assistance!
0121 775 0101



Do you need to sell? Start your journey now! Call us we can help.
01564 777 314



SCAN FOR MORE INFO
SIZE - 997 Sq Ft
TENURE - Freehold
COUNCIL TAX - Solihull MBC - C
BROADBAND - Upload Max 1 MBps
 Download Max 15 MBps
MOBILE - EE Three O2 Vodafone
EPC - B - 83
PARKING - Driveway Parking
FLOODRISK - Very Low
SERVICES - Mains
COVENANTS - N/A

Oak Lane, Barston

Offers over £425,000

Nestled within Barston village, which was voted in 2022, one of the premier villages to live with excellent transport links and the M42 just 5 minutes drive away and being within the Heart of England catchment area. This beautifully presented three bedroom end terraced property offers ample space for a family as well as delightful views of greenbelt fields from the rear landscaped garden. The property is located in a quiet rural area with a great community feel, with just approximately 600 residences in the village.

FEATURES

- Well Presented Three Bedroom End Terrace
- Modern Integrated Kitchen
- Utility
- Extended Spacious Lounge
- Ample Storage
- Large Family Bathroom
- Stunning Open Views To Fields
- South Facing Rear Garden

Are you an investor interested in expanding your portfolio?

Call 01564 777 314 to provide your investment criteria for alerts.



SCAN TO VIEW OUR WEEKLY FILMS & SUBSCRIBE

Sneak Peeks

Every week, we unveil "Sneak Peeks," a feature showcasing exclusive properties before they hit Rightmove and other platforms.

The Landlord Club

Join our Landlord Club for weekly updates on legislation, market trends, and our Letting Director's 'Investment Pick of the Week' for optimal ROI.

HTSPMD

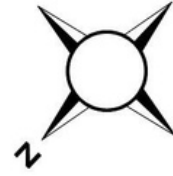
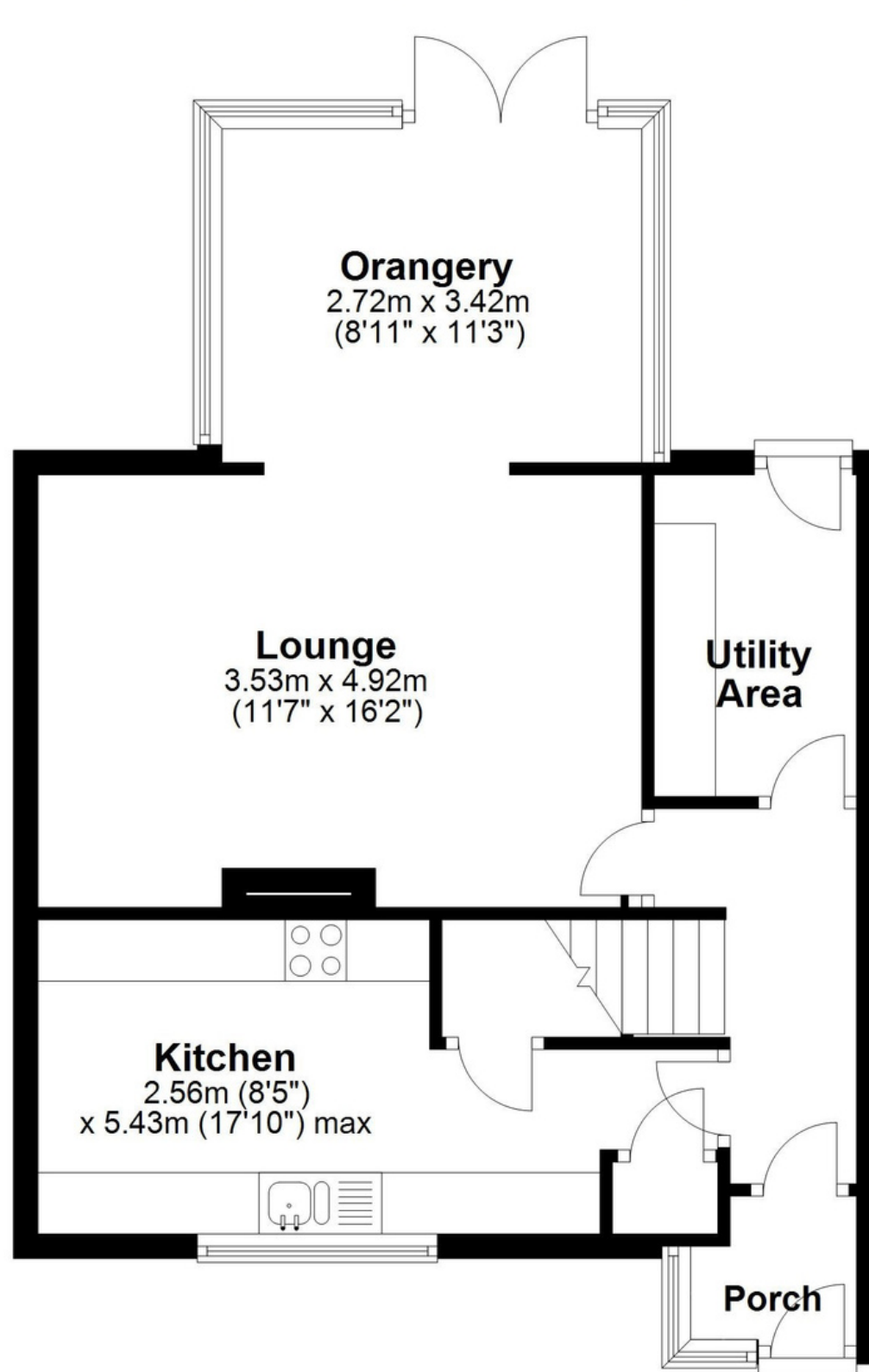
Tune into 'How's The Solihull Property Market Dom' weekly for a quick, insightful snapshot of the market.

The Mortgage Update

Get weekly insights and the best deals with our Mortgage Update, your shortcut to navigating the complex mortgage landscape confidently.

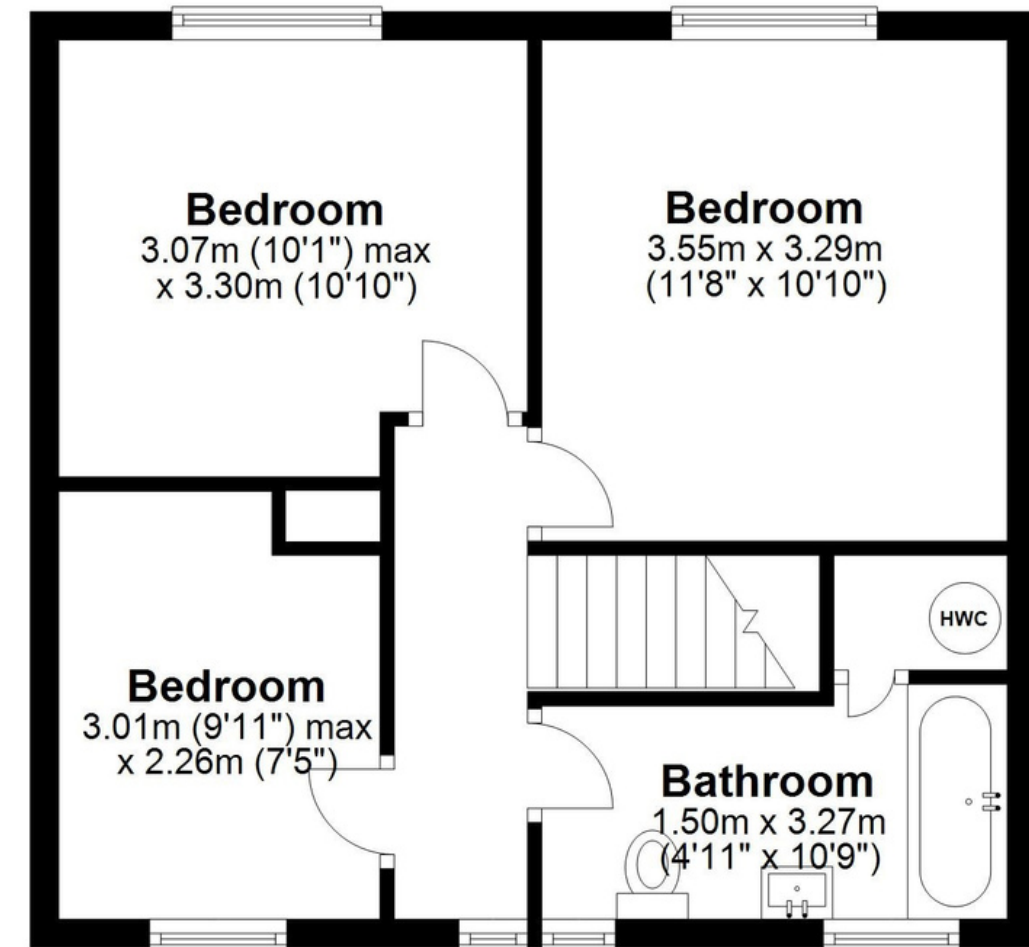
Ground Floor

Approx. 51.2 sq. metres (550.8 sq. feet)



First Floor

Approx. 41.5 sq. metres (446.7 sq. feet)



Total area: approx. 92.7 sq. metres (997.5 sq. feet)

This floor plan is for illustration purposes only, this is not intended to be a measured/scaled survey or comply with RICS guidelines. All measurements (including total floor area) openings, orientation and floor area are approximate. No details are guaranteed, they cannot be relied upon for any purpose and do not form part of any agreement. A party must rely upon its own inspection(s). No responsibility is taken for any error, omission, or mis-statement.
Plan produced using PlanUp.