

Need a Mortgage in principle to make offers? Call us now for quick assistance!  
0121 775 0101



Do you need to sell? Start your journey now! Call us we can help.  
01564 777 314



**SCAN FOR MORE INFO**  
**SIZE** - 1651 Sq Ft  
**TENURE** - Freehold  
**COUNCIL TAX** - Solihull MBC - G  
**BROADBAND** - Upload Max 1000 Mbps  
 Download Max 1000 Mbps  
**MOBILE** - EE/O2/Vodafone  
**EPC** - C  
**PARKING** - Double Garage & Off Road Parking  
**FLOODRISK** - Very Low  
**SERVICES** - Mains  
**COVENANTS** - N/A

Are you an investor interested in expanding your portfolio?

Call 01564 777 314 to provide your investment criteria for alerts.

## 5 Boningale Way, Dorridge

Purchase Price £850,000

Nestled in a quiet cul-de-sac within the prestigious Arden Academy catchment, 5 Boningale Way is a four-bedroom detached home boasting a spacious lounge, an extensively modernised kitchen diner, and a private garden. Ideal for families, it's just a short walk from Dorridge Station and local amenities.

### FEATURES

- Four Bedroom Detached House
- Spacious Through Lounge with Feature Fireplace
- Extended Modern Kitchen Living Diner
- Private Garden with Patio
- Detached Garage Partially Converted to Home Office/Games Room
- Separate Utility and Downstairs WC
- Within Arden Academy Catchment Area
- Walking Distance to Dorridge Station

### Sneak Peeks

Every week, we unveil "Sneak Peeks," a feature showcasing exclusive properties before they hit Rightmove and other platforms.

### The Landlord Club

Join our Landlord Club for weekly updates on legislation, market trends, and our Letting Director's 'Investment Pick of the Week' for optimal ROI.

### HTSPMD

Tune into 'How's The Solihull Property Market Dom' weekly for a quick, insightful snapshot of the market.

### The Mortgage Update

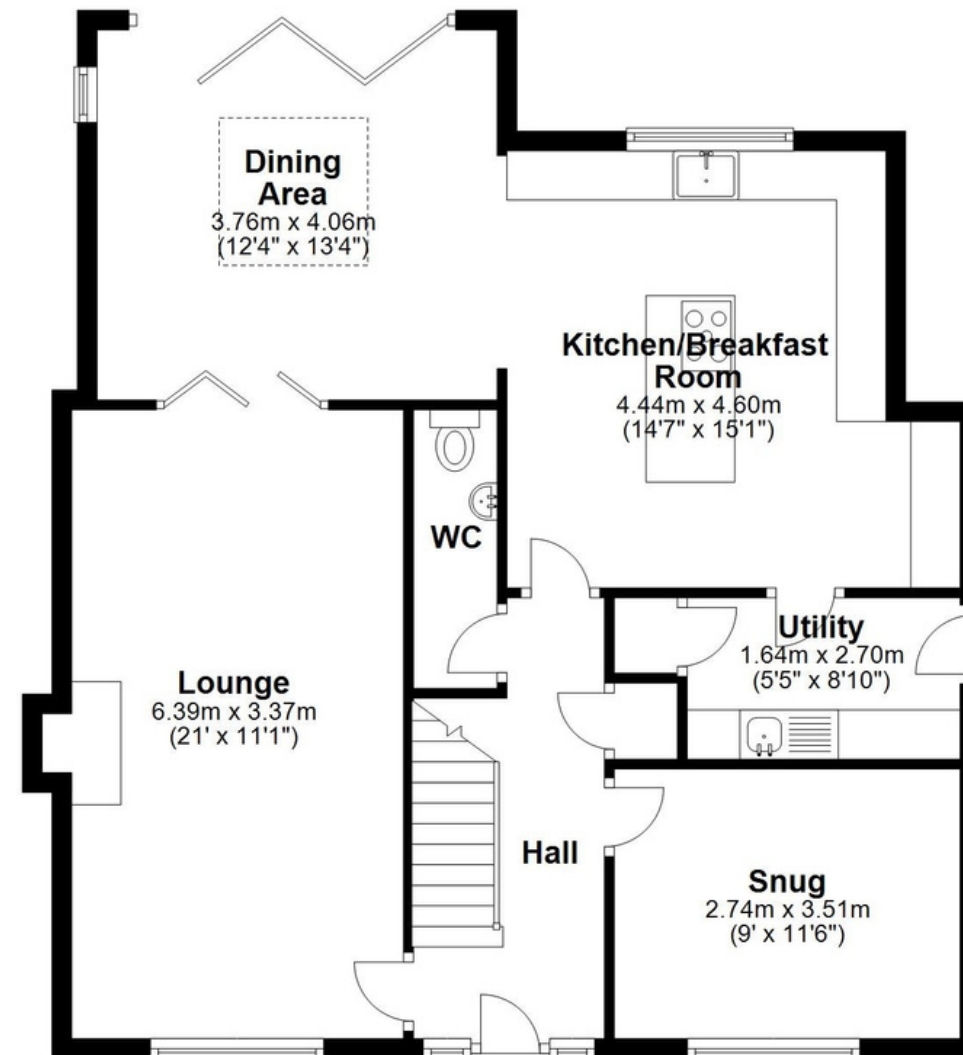
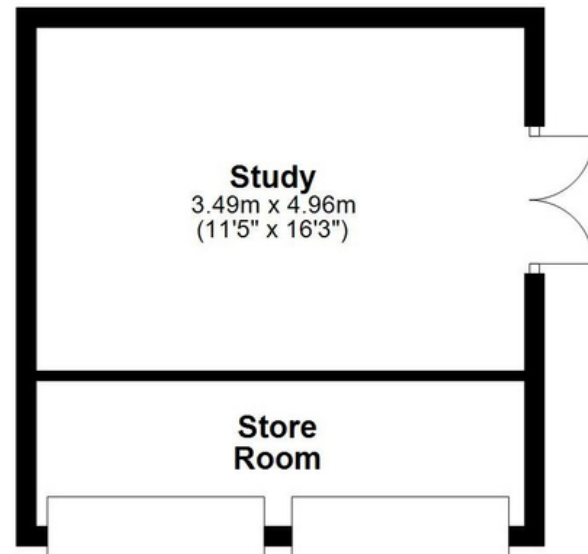
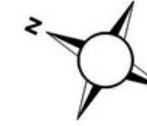
Get weekly insights and the best deals with our Mortgage Update, your shortcut to navigating the complex mortgage landscape confidently.



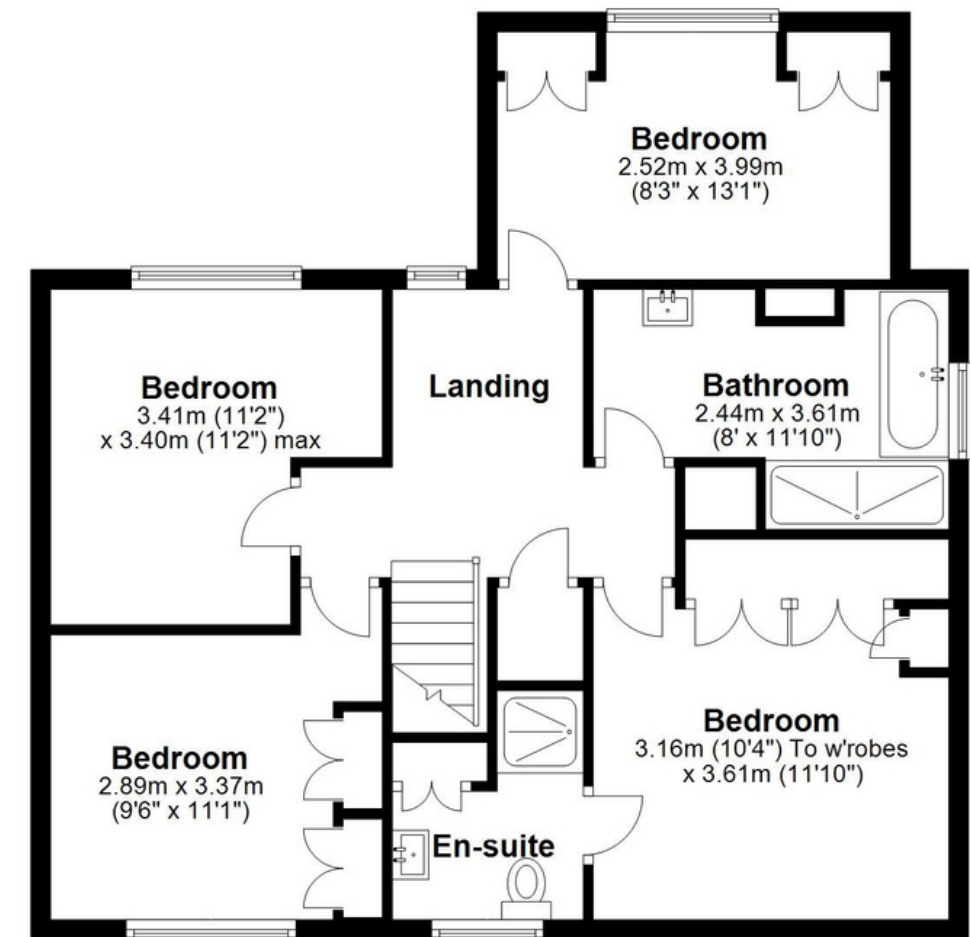
SCAN TO VIEW OUR WEEKLY FILMS & SUBSCRIBE



**Ground Floor**



**First Floor**



This floor plan is for illustration purposes only, this is not intended to be a measured/scaled survey or comply with RICS guidelines. All measurements (including total floor area) openings, orientation and floor area are approximate. No details are guaranteed, they cannot be relied upon for any purpose and do not form part of any agreement. A party must rely upon its own inspection(s). No responsibility is taken for any error, omission, or mis-statement.

Plan produced using PlanUp.