

**Need a Mortgage in principle to make offers?** Call us now for quick assistance!  
**0121 775 0101**



**Do you need to sell? Start your journey now!** Call us we can help.  
**01564 777 314**



## Woodstock Crescent

Offers in the region of £800,000

A well presented four bedroom detached house nestled in a quiet spot on this popular cul-de-sac in Dorridge. Offering spacious family accommodation, being a short walk to Dorridge village and train station, and within catchment for desirable schools, this is one not to miss. This property also offers the potential to extend (STPP).

### FEATURES

- Viewing is Highly Recommended
- Stunning Four Bedroom Detached Family Home
- Lounge, Dining Room & Study
- Extended Modern Breakfast Kitchen
- Useful Study
- Principal Bedroom with Large En Suite
- Three Further Double Bedrooms
- Modern Family Bathroom
- Detached Double Garage & Driveway Parking
- Mature, Rear Garden with Paved Patio Area



### SCAN FOR MORE INFO

**SIZE** - 1744 Sq Ft  
**TENURE** - Freehold  
**COUNCIL TAX** - Solihull MBC - G  
**BROADBAND** - Superfast 75 Mbps  
Ultrafast 1000 Mbps  
**MOBILE** - EE Three O2  
**EPC** - C  
**PARKING** - Garage and two car driveway  
**FLOODRISK** - Very Low  
**SERVICES** - Mains  
**COVENANTS** - N/A

**Are you an investor interested in expanding your portfolio?**

**Call 01564 777 314 to provide your investment criteria for alerts.**

### Sneak Peeks

Every week, we unveil "Sneak Peeks," a feature showcasing exclusive properties before they hit Rightmove and other platforms.

### The Landlord Club

Join our Landlord Club for weekly updates on legislation, market trends, and our Letting Director's 'Investment Pick of the Week' for optimal ROI.

### HTSPMD

Tune into 'How's The Solihull Property Market Dom' weekly for a quick, insightful snapshot of the market.

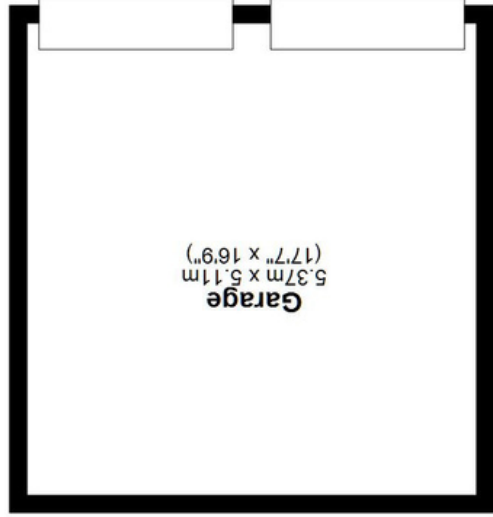
### The Mortgage Update

Get weekly insights and the best deals with our Mortgage Update, your shortcut to navigating the complex mortgage landscape confidently.

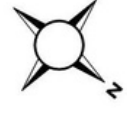
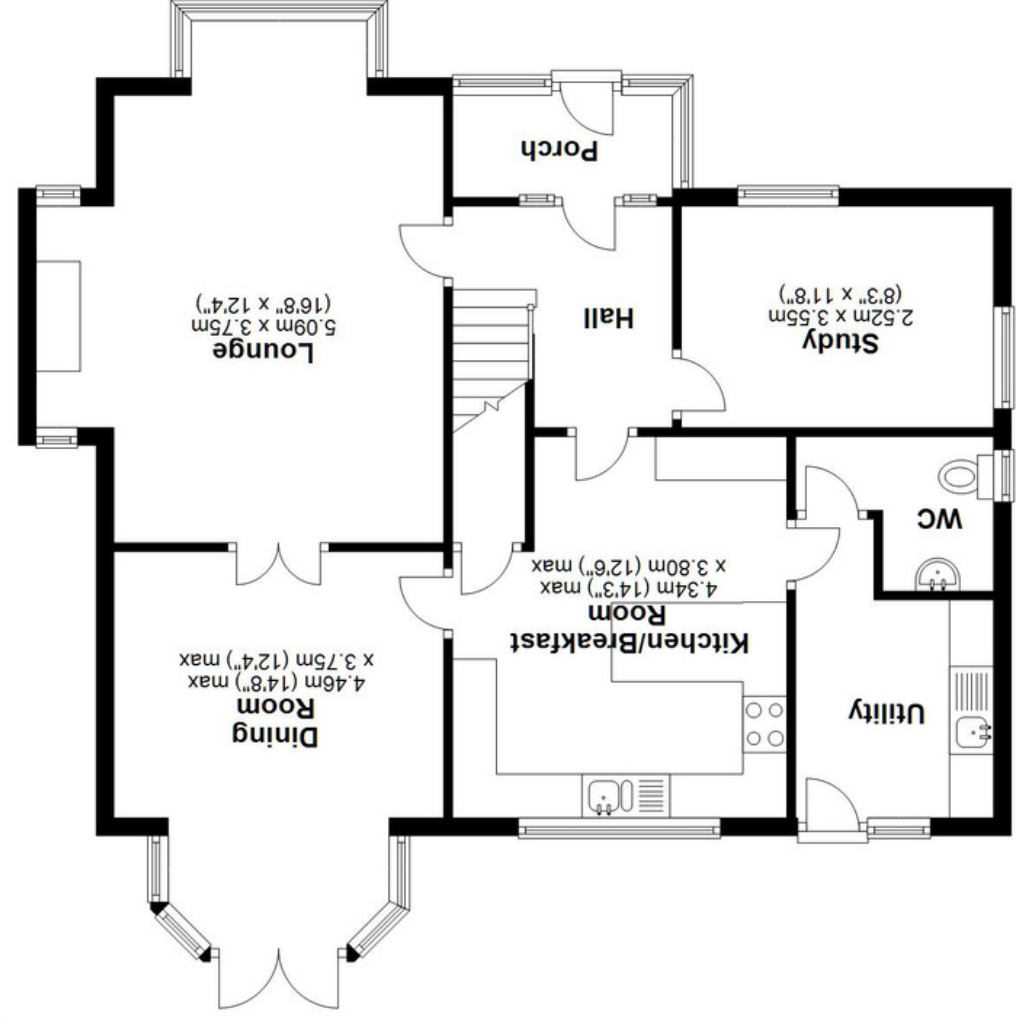


SCAN TO VIEW OUR WEEKLY FILMS & SUBSCRIBE

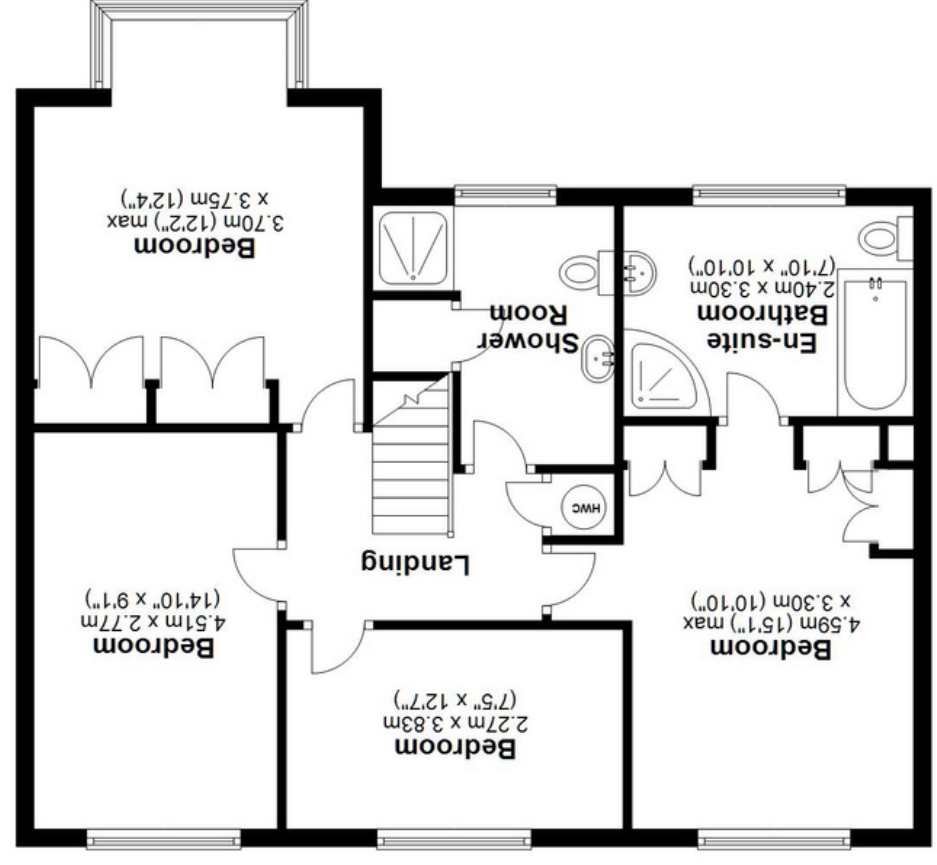




Ground Floor  
Approx. 84.6 sq. metres (910.8 sq. feet)



First Floor  
Approx. 77.4 sq. metres (833.3 sq. feet)



Total area: approx. 162.0 sq. metres (1744.1 sq. feet)

Please note this plan is for illustration purposes only, this is not intended to be a measured survey or comply with RICS guidelines. All measurements are for the actual floor area and are approximate so should be checked by prospective buyers/tenants. No responsibility is taken for any error, omission, or mis-statement.  
Plan produced using PlanUp.