

WELCOME TO



ST. RUMBOLD'S FIELDS

— BUCKINGHAM —



WELCOME TO ST RUMBOLD'S FIELDS

St Rumbold's Fields is a new community of 2, 3, 4 and 5 bedroom homes within the historic town of Buckingham. Positioned along sweeping tree-line roads and with many homes enjoying views across St Rumbold's Park, there is a real sense of style and space.

The traditional architectural designs have stayed true to local style, while contemporary interiors and energy-efficient technology will help you to save on your utility bills. Being close to the things that really matter is crucial when you are looking for a new home. We put a lot of thought into where we build our developments, choosing the best locations for both town and country living. Set against a beautiful rural backdrop of farmland and countryside, St Rumbold's Fields offers all the benefits of a country lifestyle but is just a walk away from the historic town centre.

CREATING A SUSTAINABLE COMMUNITY WHERE FAMILIES AND NATURE CAN THRIVE

At Barratt Homes, we do more than simply craft beautiful homes and desirable developments.

We design and build great places that meet the highest standards, and that promote sustainable, healthy and happy living for our customers.

We know we must give our customers confidence that their homes are designed and built to meet the challenges of the future. We do this through creating places where people and nature can thrive.





ST RUMBOLD'S FIELDS

A LOCATION LIKE NO OTHER

- Located in the historic market town of Buckingham, surrounded by idyllic countryside but within easy reach of everyday amenities
- 14 minute walk to a range of shops, pubs & restaurants in the town centre
- Reach London in under 40 minutes from Milton Keynes or Bletchley Train Station
- Located between the M1 & M40, you'll be within easy access to Milton Keynes, Bicester & Aylesbury

IDEALLY LOCATED FOR YOUR FAMILY

- 43% of the development allocated to open space - including play areas, vegetation & landscaping for all to enjoy
- Fully equipped park & sporting facilities within the development
- A Range of 'Outstanding' & 'Good' rated schools nearby, including Royal Latin Grammar School



THIRTY MINUTES FROM YOUR NEW HOME



Buckingham Town Centre

14 minute walk



Royal Latin Grammar School

4 minutes by car



Bletchley Train Station

20 minutes by car



Bicester Village

18 minutes by car



Milton Keynes

23 minutes by car



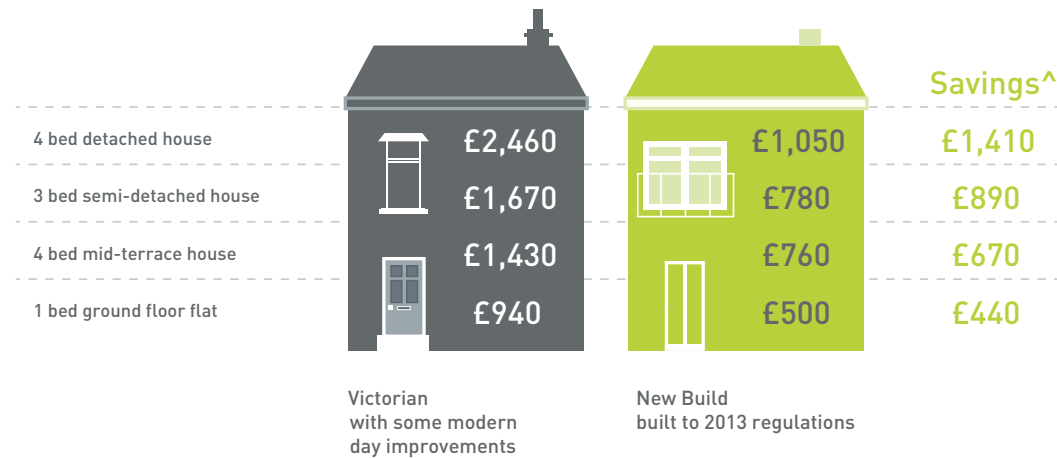
OUTSTANDING DESIGN

Barratt Homes are built around the way you want to live. Careful consideration and attention to detail go into every home we build – our homes are flexible and adaptable to suit every lifestyle. Open-plan living spaces are integral to our design, helping you make the most of space and natural light, which allows every room to be enjoyed to its maximum potential.


We also know how vital outdoor space is in creating places people love to live in - whether it's gardens or landscaped areas. That's why we have made sure there is plenty surrounding these homes, with over 40% of the development dedicated to open space, for the whole neighbourhood to enjoy.

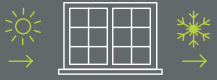
WE'RE HELPING TO MAKE YOUR HOME MORE ENERGY-EFFICIENT


We create low-carbon and efficient homes that are designed and built for better living and meet the challenges of the future.



THE BENEFITS OF A SUSTAINABLE, ENERGY-EFFICIENT NEW HOME


- 


Highly-efficient insulation could mean lower heating costs
- 

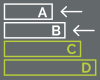
Argon-filled double-glazing as standard. letting heat in and keeping cold out
- 

Save up to £1,410 a year on energy bills compared to an updated Victorian equivalent

ENERGY-EFFICIENCY AS STANDARD

- 

Clever design cuts the amount of water used
- 

Up to 57% more energy-efficient than an updated Victorian equivalent
- 

EPC A or B energy-efficiency rating, shared by just 3.1% of existing homes

[^]Source: Annual Household Energy Spend | Zero Carbon Hub

ST RUMBOLD'S FIELDS

DEVELOPMENT LAYOUT

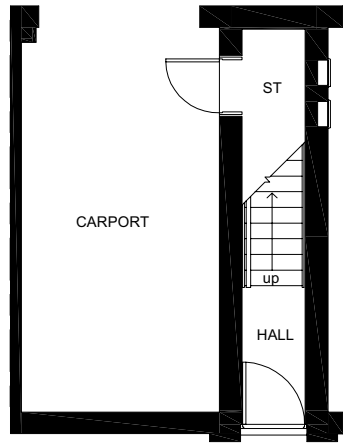
- **Block B**
1-2 bedroom apartments
- **Alverton**
2 bedroom home
- **Haxby**
2 bedroom home
- **Leiston**
2 bedroom home
- **Moresby**
3 bedroom home
- **Folkestone**
3 bedroom home
- **Eskdale**
3 bedroom home
- **Eskdale Curve**
3 bedroom home
- **Buchanan**
3 bedroom home
- **Maldstone**
3 bedroom home
- **Norbury**
3 bedroom home
- **Tamerlan**
4 bedroom home
- **Milfield**
4 bedroom home
- **Alnmouth**
4 bedroom home
- **Alderney**
4 bedroom home
- **Woodcole**
4 bedroom home
- **Oxford**
4 bedroom home
- **Lamberlan**
5 bedroom home
- **Affordable Housing Rented**
- **Affordable Housing Shared Ownership**
- **Bin Store**
- **Visitor Parking Space**
- **Cycle Store**
- ⊞ **Sub Station**



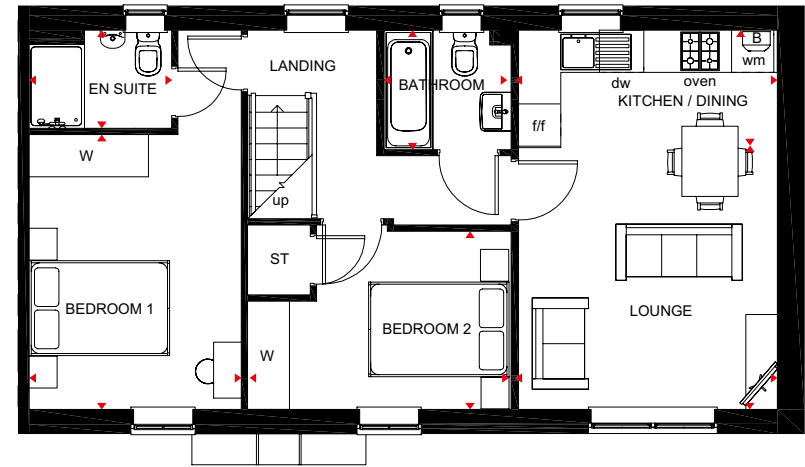
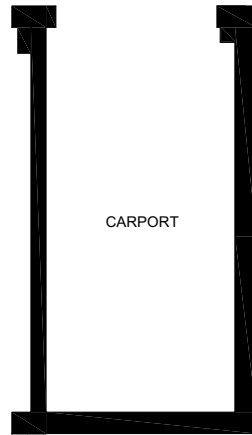


ALVERTON 2 BEDROOM HOME

- This attractive first-floor home will appeal to first-time buyers
- The open-plan fitted kitchen with dining area and lounge is a bright and airy place to relax or entertain friends
- There are two double bedrooms, the largest with its own en suite shower room, and a fully fitted bathroom



DRIVE-THROUGH



First Floor

Kitchen/Dining	1789 x 3732mm	5'10" x 12'3"
Lounge	3611 x 3732mm	11'10" x 12'3"
Bedroom 1	3024 x 3914mm	9'11" x 12'10"
En suite	1398 x 2035mm	4'7" x 6'8"
Bedroom 2	2538 x 3692mm	8'4" x 12'1"
Bathroom	1701 x 1755mm	5'7" x 5'9"

[Approximate dimensions]

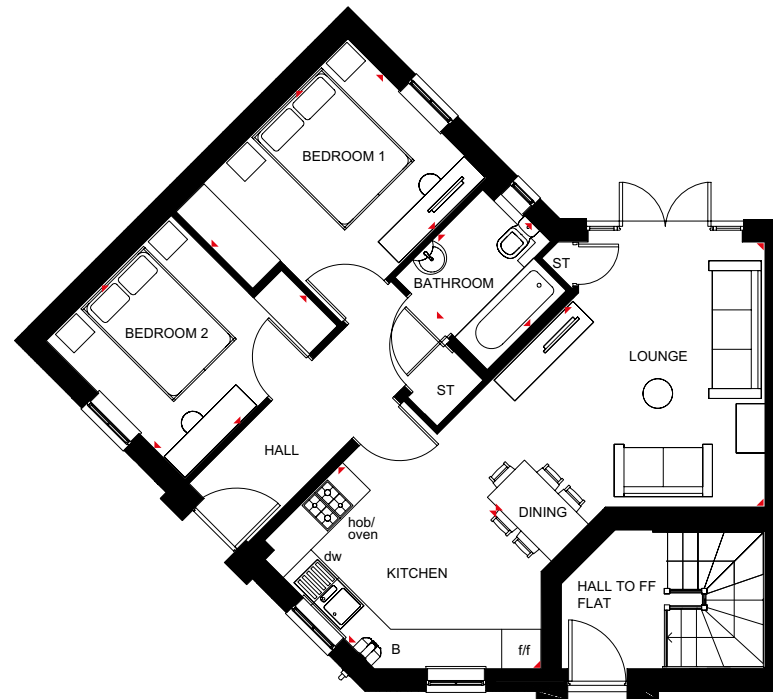
KEY	B Boiler	f/f Fridge/freezer space	◄► Dimension location
	ST Store	dw Dishwasher space	
	wm Washing machine space	W Wardrobe	

All images used are for illustrative purposes. These and the dimensions given are illustrative for this house type and individual properties may differ. Please check with your Sales Adviser in respect of individual properties. We give maximum dimensions within each room which includes areas of fixtures and fittings including fitted furniture. These dimensions should not be used for carpet or flooring sizes, appliance spaces or items of furniture. All images, photographs and dimensions are not intended to be relied upon for, nor to form part of, any contract unless specifically incorporated in writing into the contract.



HAXBY 2 BEDROOM HOME

- A stylish ground-floor home featuring open-plan lounge and dining area with French doors opening on to the rear garden
- Dual-aspect kitchen area comes with quality units and appliances in a range of finishes
- Two double bedrooms and a main family bathroom complete this home



Ground Floor

Lounge / Dining	4320 x 5967mm	14'2" x 19'7"
Kitchen	4375 x 2845mm	14'4" x 9'4"
Bedroom 1	2970 x 3722mm	9'9" x 12'3"
Bedroom 2	2994 x 3295mm	9'10" x 10'10"
Bathroom	1987 x 2061mm	6'6" x 6'9"

[Approximate dimensions]

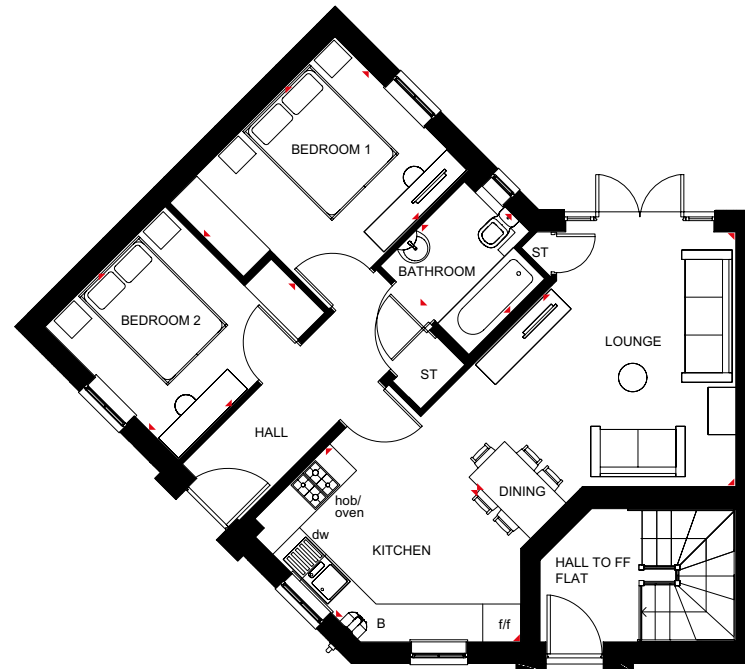
KEY	B	Boiler	dw	Dishwasher space
	ST	Store	◀▶	Dimension location
	ff	Fridge/freezer space		

All images used are for illustrative purposes. These and the dimensions given are illustrative for this house type and individual properties may differ. Please check with your Sales Adviser in respect of individual properties. We give maximum dimensions within each room which includes areas of fixtures and fittings including fitted furniture. These dimensions should not be used for carpet or flooring sizes, appliance spaces or items of furniture. All images, photographs and dimensions are not intended to be relied upon for, nor to form part of, any contract unless specifically incorporated in writing into the contract.



LEISTON 2 BEDROOM HOME

- A stylish ground-floor home featuring open-plan lounge and dining area with French doors opening on to the rear garden
- Dual-aspect kitchen area comes with quality units and appliances in a range of finishes
- Two double bedrooms and a main family bathroom complete this home



Ground Floor

Lounge / Dining	4320 x 5967mm	14'2" x 19'7"
Kitchen	4375 x 2845mm	14'4" x 9'4"
Bedroom 1	2970 x 3722mm	9'9" x 12'3"
Bedroom 2	2994 x 3295mm	9'10" x 10'10"
Bathroom	1987 x 2061mm	6'6" x 6'9"

(Approximate dimensions)

KEY	B	Boiler	dw	Dishwasher space
	ST	Store	↔	Dimension location
	/f	Fridge/freezer space		

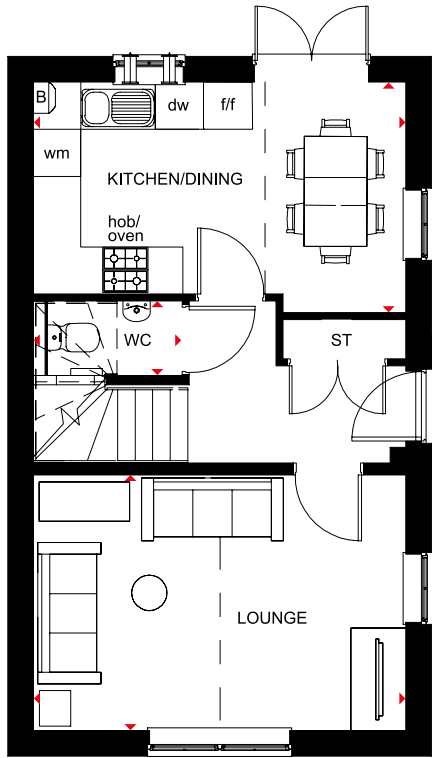
All images used are for illustrative purposes. These and the dimensions given are illustrative for this house type and individual properties may differ. Please check with your Sales Adviser in respect of individual properties. We give maximum dimensions within each room which includes areas of fixtures and fittings including fitted furniture. These dimensions should not be used for carpet or flooring sizes, appliance spaces or items of furniture. All images, photographs and dimensions are not intended to be relied upon for, nor to form part of, any contract unless specifically incorporated in writing into the contract.



MORESBY

3 BEDROOM DETACHED HOME

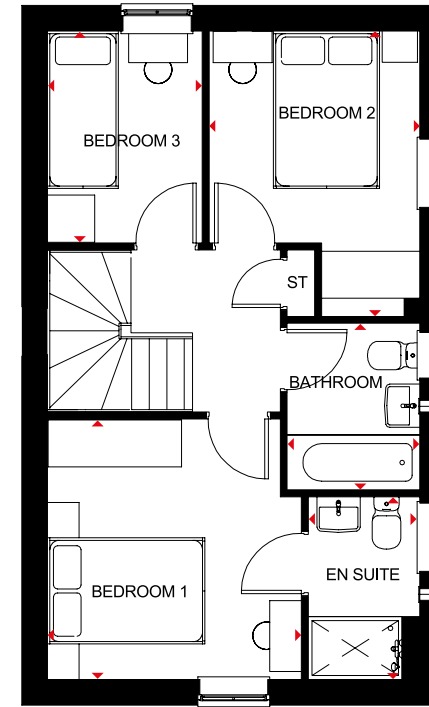
- A bright family home full of light and plenty of space
- The ground floor has a dual-aspect lounge and an open-plan kitchen with dining area opening on to the garden
- On the first floor there are two double bedrooms, the **main** with en suite a single bedroom and family bathroom



Ground Floor

Lounge	4735 x 3250mm	15'6" x 10'6"
Kitchen/Dining	2930 x 4735mm	9'7" x 15'6"
WC	950 x 1825mm	3'1" x 6'0"

(Approximate dimensions)



First Floor

Bedroom 1	3310 x 3220mm	10'10" x 10'7"
En suite	1420 x 2320mm	4'8" x 6'7"
Bedroom 2	2680 x 3625mm	8'9" x 11'10"
Bedroom 3	2065 x 2690mm	6'9" x 8'9"
Bathroom	2100 x 1685mm	6'1" x 5'6"

(Approximate dimensions)

KEY	B	Boiler	f/f	Fridge/freezer space
	ST	Stair	dw	Dishwasher space
	wm	Washing machine space	↔	Dimension location

All images used are for illustrative purposes. These and the dimensions given are illustrative for this house type and individual properties may differ. Please check with your Sales Adviser in respect of individual properties. We give maximum dimensions within each room which includes areas of fixtures and fittings including fitted furniture. These dimensions should not be used for carpet or flooring sizes, appliance spaces or items of furniture. All images, photographs and dimensions are not intended to be relied upon for, nor to form part of, any contract unless specifically incorporated in writing into the contract.

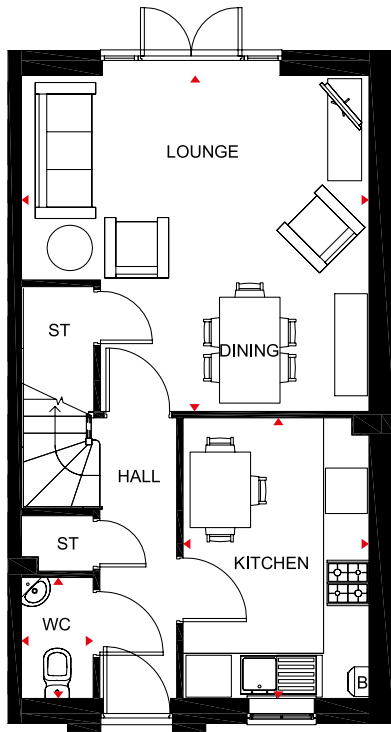
XXXXXX



FOLKESTONE

3 BEDROOM SEMI-DETACHED

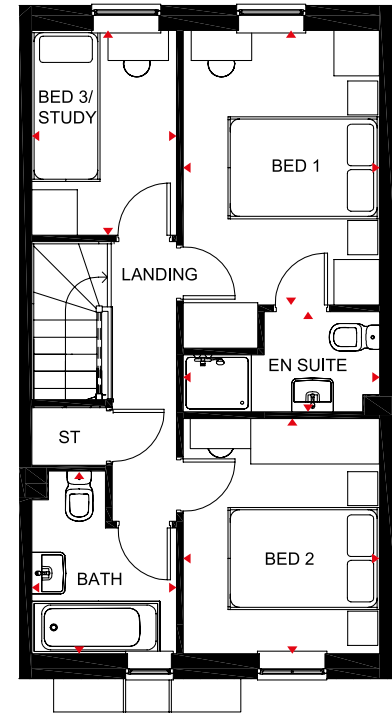
- Bright three bedroom home with flexible space designed for practical modern living
- Open-plan living and dining area opens onto the rear garden, while a fully fitted kitchen includes room for a breakfast area
- Upstairs are a good-sized **main** bedroom with en suite, a further double bedroom, single bedroom and family bathroom



Ground Floor

Lounge/Dining	4445 x 4598mm	14'7" x 15'1"
Kitchen	2458 x 3713mm	8'1" x 12'2"
WC	949 x 1600mm	3'1" x 5'3"

[Approximate dimensions]



First Floor

Bedroom 1	2595 x 3633mm	8'6" x 11'11"
En Suite	1325 x 2595mm	4'4" x 8'6"
Bedroom 2	2595 x 3112mm	8'6" x 10'2"
Bedroom 3/ Study	1913 x 2708mm	6'3" x 8'10"
Bathroom	1913 x 2406mm	6'3" x 7'10"

[Approximate dimensions]

- KEY**
- B Boiler
 - ST Store
 - ◀▶ Dimension location

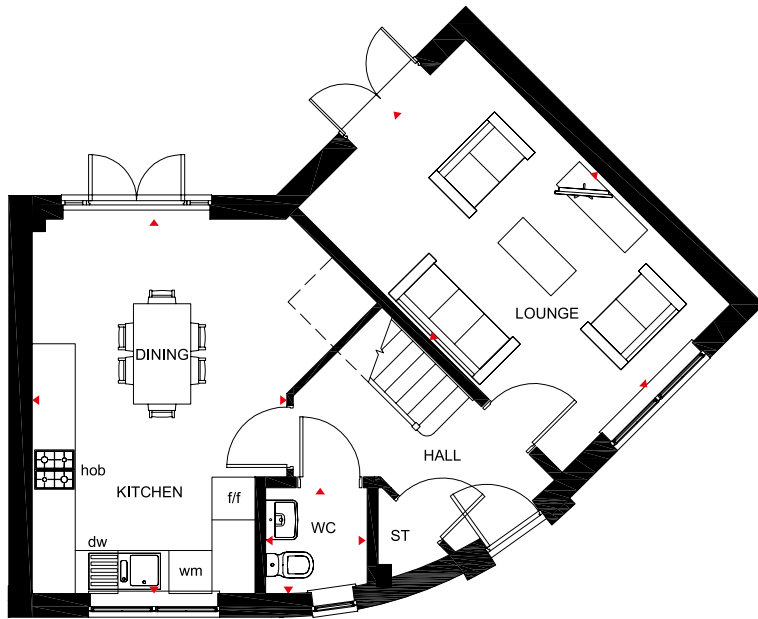
All images used are for illustrative purposes. These and the dimensions given are illustrative for this house type and individual properties may differ. Please check with your Sales Adviser in respect of individual properties. We give maximum dimensions within each room which includes areas of fixtures and fittings including fitted furniture. These dimensions should not be used for carpet or flooring sizes, appliance spaces or items of furniture. All images, photographs and dimensions are not intended to be relied upon for, nor to form part of, any contract unless specifically incorporated in writing into the contract.

XXXXXX



ESKDALE 3 BEDROOM HOME

- Natural light floods into this home via oversized windows and two sets of French doors leading to the rear garden
- A large open-plan kitchen and dining area creates a hub for the family, while the dual-aspect lounge provides room to entertain
- Upstairs are two spacious double bedrooms, the main with en suite, a single bedroom and the family bathroom



Ground Floor

Lounge	3321 x 5230mm	10'11" x 17'2"
Kitchen/Dining	3558 x 5230mm	11'8" x 17'2"
WC	1418 x 1480mm	4'8" x 4'10"

[Approximate dimensions]



First Floor

Bedroom 1	3030 x 4260mm	9'11" x 14'0"
En suite	1723 x 2398mm	5'8" x 7'10"
Bedroom 2	2929 x 3950mm	9'7" x 12'11"
Bedroom 3	2213 x 2310mm	7'3" x 7'7"
Bathroom	1863 x 2113mm	6'1" x 6'11"

[Approximate dimensions]

KEY	ST	Store	dw	Dishwasher space
	wm	Washing machine space	W	Wardrobe space
	f/f	Fridge/freezer space	◀▶	Dimension location

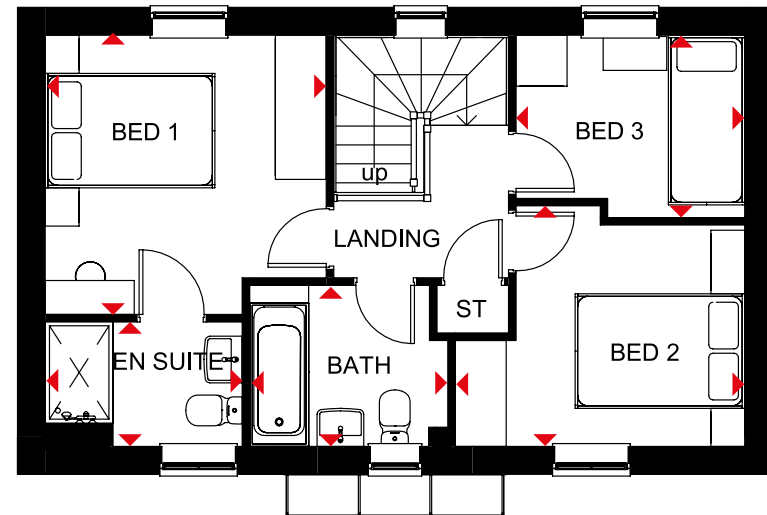
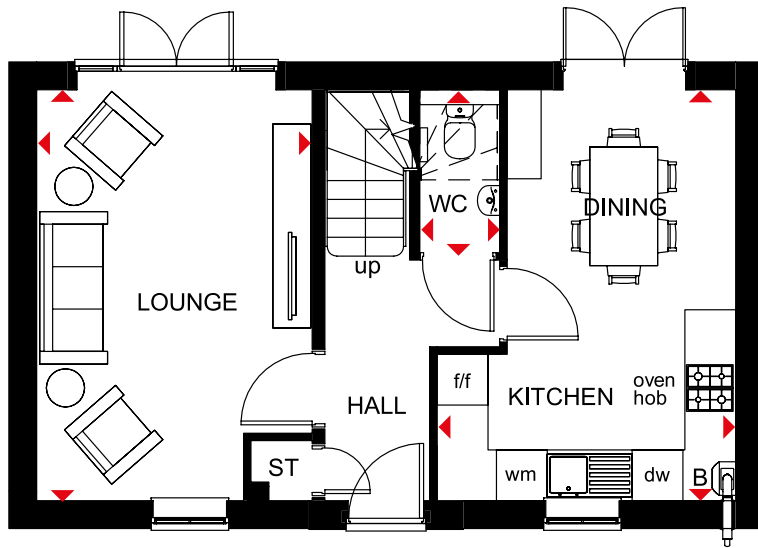
All images used are for illustrative purposes. These and the dimensions given are illustrative for this house type and individual properties may differ. Please check with your Sales Adviser in respect of individual properties. We give maximum dimensions within each room which includes areas of fixtures and fittings including fitted furniture. These dimensions should not be used for carpet or flooring sizes, appliance spaces or items of furniture. All images, photographs and dimensions are not intended to be relied upon for, nor to form part of, any contract unless specifically incorporated in writing into the contract.

XXXXXX



BUCHANAN 3 BEDROOM HOME

- A three bedroom home offering open-plan kitchen and dining area with French doors opening onto the rear garden
- Well-proportioned lounge with French doors leading to the garden
- First floor features two double bedrooms with en suite to main bedroom, single bedroom and family bathroom



Ground Floor

Lounge	4848 x 3250mm	15'11" x 10'8"
Kitchen/Dining	4848 x 3521mm	15'11" x 11'7"
WC	1921 x 943mm	6'4" x 3'1"

[Approximate dimensions]

First Floor

Bedroom 1	3312 x 3292mm	10'10" x 10'10"
En Suite	2322 x 1468mm	7'7" x 4'10"
Bedroom 2	3413 x 2836mm	11'2" x 9'4"
Bedroom 3	2696 x 2150mm	8'10" x 7'1"
Bathroom	2335 x 1900mm	7'8" x 6'3"

[Approximate dimensions]

KEY	B	Boiler	f/f	Fridge/freezer space
	ST	Store	dw	Dishwasher space
	wm	Washing machine space	◀▶	Dimension location

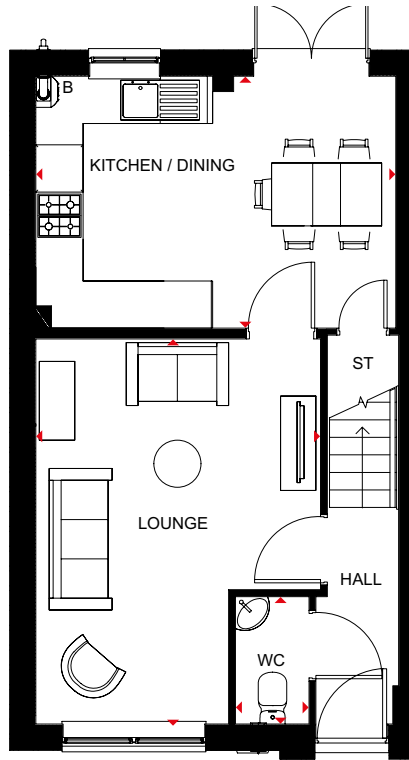
All images used are for illustrative purposes. These and the dimensions given are illustrative for this house type and individual properties may differ. Please check with your Sales Adviser in respect of individual properties. We give maximum dimensions within each room which includes areas of fixtures and fittings including fitted furniture. These dimensions should not be used for carpet or flooring sizes, appliance spaces or items of furniture. All images, photographs and dimensions are not intended to be relied upon for, nor to form part of, any contract unless specifically incorporated in writing into the contract.

SP415555



MAIDSTONE 3 BEDROOM HOME

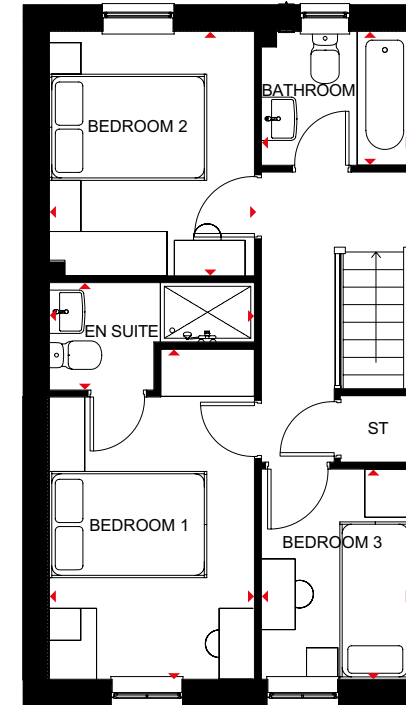
- An ideal family home designed with plenty of space for modern living
- The ground floor has a good-sized lounge and an open-plan kitchen with dining area and French doors leading to the garden
- The first floor has two double bedrooms - the generous main bedroom with en suite - a single bedroom and family bathroom



Ground Floor

Lounge	3619 x 4896mm	11'10" x 16'1"
Kitchen / Dining	4575 x 3203mm	15'0" x 10'6"
WC	935 x 960mm	3'1" x 5'4"

(Approximate dimensions)



First Floor

Bedroom 1	2607 x 4199mm	8'7" x 13'9"
En Suite	2607 x 1378mm	8'7" x 4'6"
Bedroom 2	2612 x 3107mm	8'7" x 10'2"
Bedroom 3	1918 x 2671mm	6'3" x 8'9"
Bathroom	1928 x 1702mm	6'4" x 5'7"

(Approximate dimensions)

KEY
 B Boiler
 ST Store
 ◀▶ Dimension location

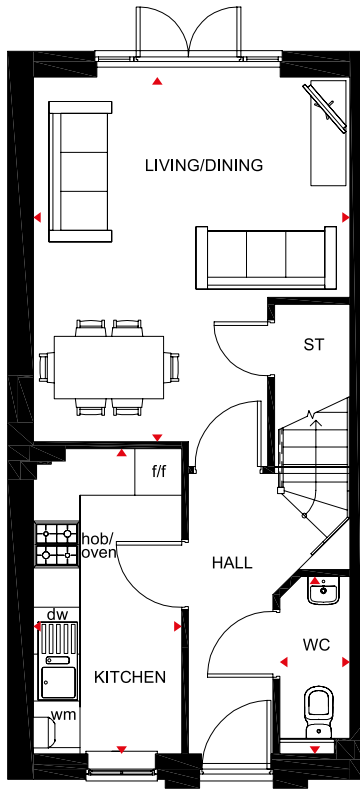
All images used are for illustrative purposes. These and the dimensions given are illustrative for this house type and individual properties may differ. Please check with your Sales Adviser in respect of individual properties. We give maximum dimensions within each room which includes areas of fixtures and fittings including fitted furniture. These dimensions should not be used for carpet or flooring sizes, appliance spaces or items of furniture. All images, photographs and dimensions are not intended to be relied upon for, nor to form part of, any contract unless specifically incorporated in writing into the contract.



NORBURY

3 BEDROOM SEMI-DETACHED HOME

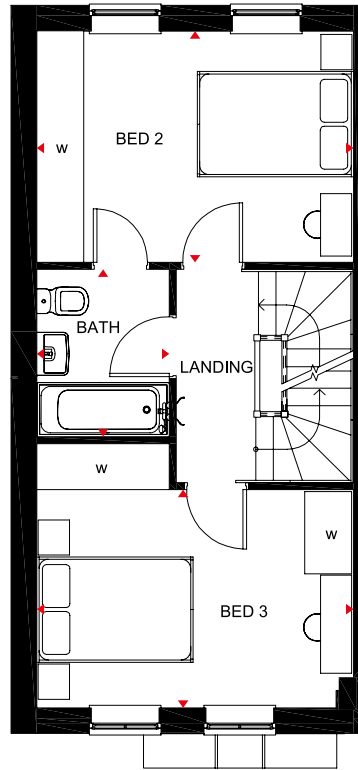
- Bright and spacious family home, designed over three floors
- Open-plan lounge with dining area leading to the rear garden through French doors
- Front-aspect, stylish fitted kitchen
- Two double bedrooms and a family bathroom on the first floor
- Large **main** bedroom with en suite and dressing area takes up the entire top floor



Ground Floor

Living/Dining	4056 x 4675mm	13'3" x 15'4"
Kitchen	1900 x 3910mm	6'3" x 12'10"
WC	897 x 2272mm	2'11" x 7'5"

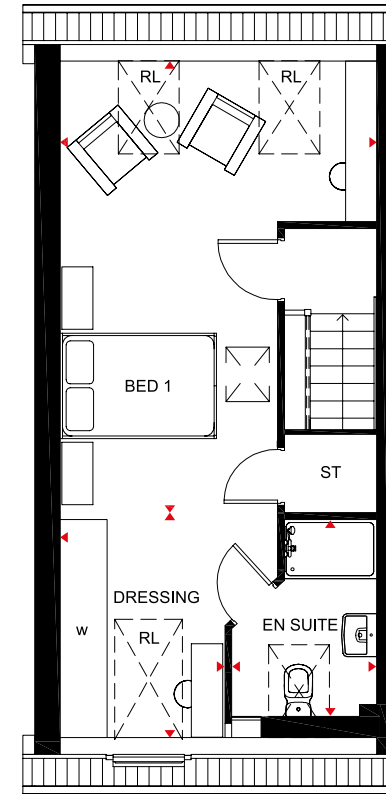
(Approximate dimensions)



First Floor

Bath	1698 x 2146mm	5'7" x 7'0"
Bedroom 2	2965 x 4056mm	9'9" x 13'3"
Bedroom 3	2799 x 4056mm	9'2" x 13'3"

(Approximate dimensions)



Second Floor

Bedroom 1	4056 x 5195*mm	13'4" x 17'0"
Dressing	2110 x 2987*mm	6'11" x 9'9"
En suite	1860 x 2800mm	6'1" x 9'2"

(Approximate dimensions)

*Overall floor dimensions include lower ceiling areas.

KEY

ST	Store	dw	Dishwasher space
wm	Washing machine space	RL	Roof light
f/f	Fridge/freezer space	◄►	Dimension location

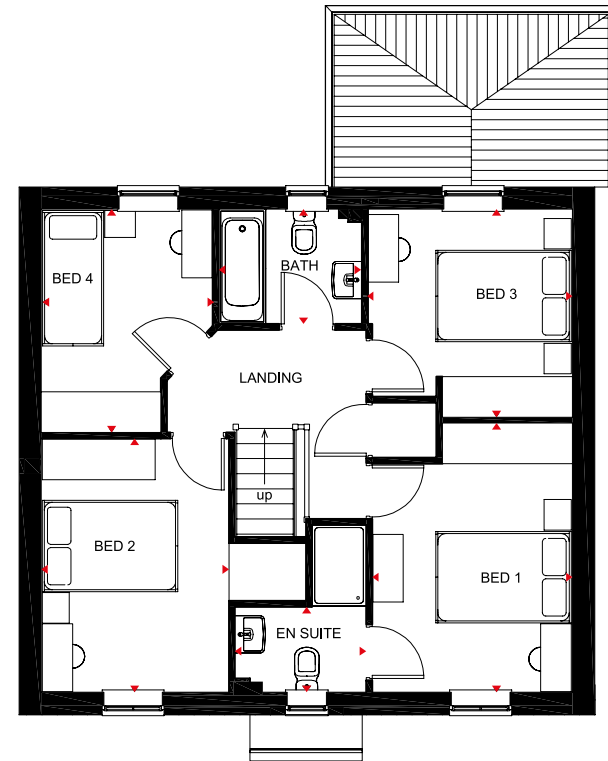
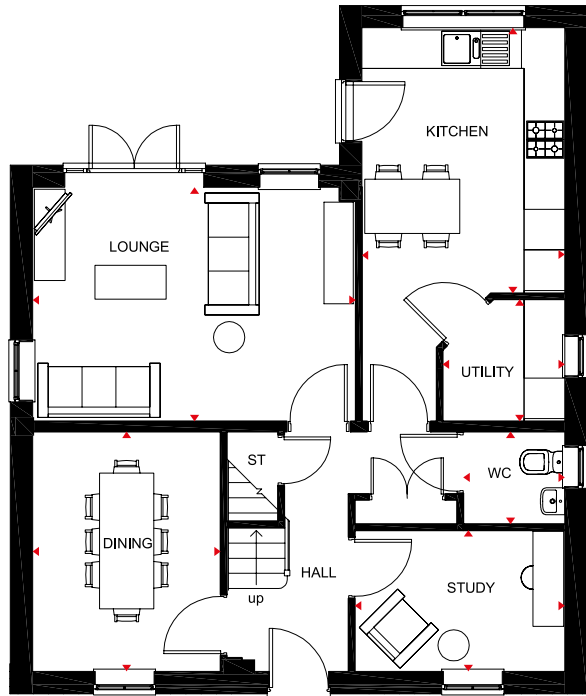
All images used are for illustrative purposes. These and the dimensions given are illustrative for this house type and individual properties may differ. Please check with your Sales Adviser in respect of individual properties. We give maximum dimensions within each room which includes areas of fixtures and fittings including fitted furniture. These dimensions should not be used for carpet or flooring sizes, appliance spaces or items of furniture. All images, photographs and dimensions are not intended to be relied upon for, nor to form part of, any contract unless specifically incorporated in writing into the contract.



TAMERTON

4 BEDROOM DETACHED HOME

- A spacious home designed to be light and airy with oversized windows
- The generous lounge has French doors leading to the rear garden
- A fitted kitchen with breakfast area and utility room, a separate dining room and a study are also on the ground floor
- Upstairs are three double bedrooms, the main with en suite, a single bedroom and a family bathroom



Ground Floor

Lounge	3452 x 4767mm	11'4" x 15'7"
Kitchen	2994 x 3917mm	9'10" x 12'10"
Utility	1801 x 1803mm	5'11" x 5'11"
WC	1366 x 1500mm	4'6" x 4'11"
Study	2084 x 3099mm	6'10" x 10'2"
Dining	2776 x 3537mm	9'1" x 11'7"

[Approximate dimensions]

First Floor

Bedroom 1	2961 x 3977mm	9'9" x 13'0"
En suite	1261 x 1939mm	4'2" x 6'4"
Bedroom 2	2773 x 3751mm	9'1" x 12'3"
Bedroom 3	3022 x 3074mm	9'11" x 10'1"
Bedroom 4	2535 x 3300mm	8'4" x 10'10"
Bathroom	2155 x 1710mm	6'11" x 5'7"

[Approximate dimensions]

KEY ST Store
 ◀▶ Dimension location

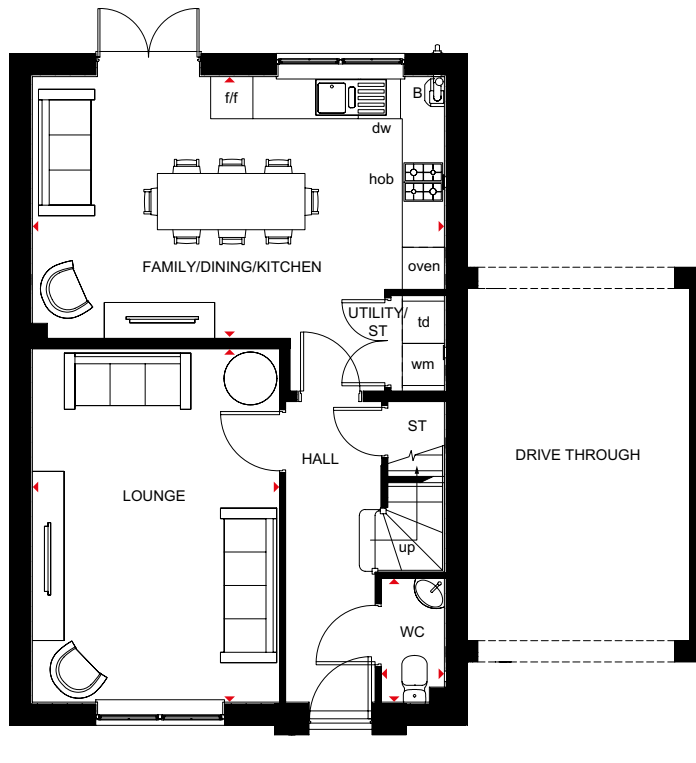
All images used are for illustrative purposes. These and the dimensions given are illustrative for this house type and individual properties may differ. Please check with your Sales Adviser in respect of individual properties. We give maximum dimensions within each room which includes areas of fixtures and fittings including fitted furniture. These dimensions should not be used for carpet or flooring sizes, appliance spaces or items of furniture. All images, photographs and dimensions are not intended to be relied upon for, nor to form part of, any contract unless specifically incorporated in writing into the contract.

SP399282



MILFIELD 4 BEDROOM HOME

- Spacious home with an open-plan kitchen/family/dining room with French doors opening out into the garden
- A bright separate lounge on the ground floor
- Upstairs the main bedroom with en suite, three further double bedrooms and a family bathroom



Ground Floor

Lounge	5026 x 3558mm	16'6" x 11'8"
Kitchen/Dining/Family	5835 x 3723mm	19'2" x 12'5"
WC	1760 x 900mm	5'9" x 2'11"

[Approximate dimensions]

First Floor

Bedroom 1	3512 x 3450mm	11'6" x 11'4"
En Suite	1813 x 1710mm	5'11" x 5'7"
Bedroom 2	3115 x 4960mm	10'3" x 16'3"
Bedroom 3	2886 x 3242mm	9'6" x 10'8"
Bedroom 4	2886 x 3242mm	9'6" x 10'8"
Bathroom	2258 x 1760mm	7'5" x 5'9"

[Approximate dimensions]

KEY	B Boiler	f/f Fridge/freezer space	w Wardrobe space
	ST Store	dw Dishwasher space	◀▶ Dimension location
	wm Washing machine space	td Tumble dryer space	

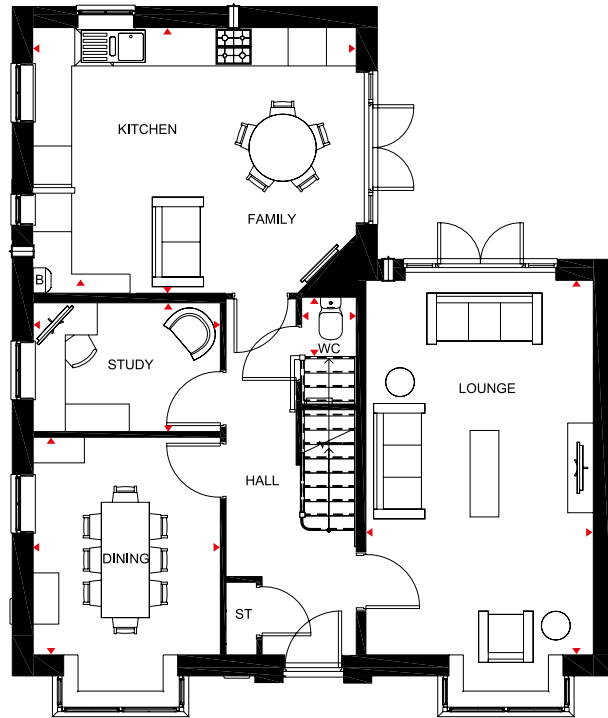
All images used are for illustrative purposes. These and the dimensions given are illustrative for this house type and individual properties may differ. Please check with your Sales Adviser in respect of individual properties. We give maximum dimensions within each room which includes areas of fixtures and fittings including fitted furniture. These dimensions should not be used for carpet or flooring sizes, appliance spaces or items of furniture. All images, photographs and dimensions are not intended to be relied upon for, nor to form part of, any contract unless specifically incorporated in writing into the contract.



ALNMOUTH

4 BEDROOM DETACHED HOME

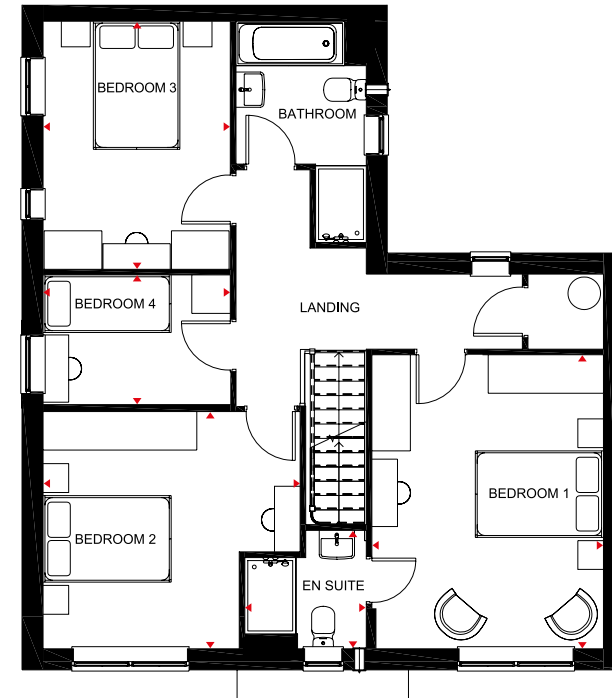
- The lounge of this bright and airy home is generously sized with ample room to relax
- The open-plan kitchen, with utility area and family space, makes an ideal family hub. Both the kitchen and lounge have French doors leading to the garden
- A separate dining room and study are also on the ground floor
- Upstairs are three double bedrooms, the **main** with en suite, a single bedroom and family bathroom



Ground Floor

Lounge	5901 x 3550mm	19'4" x 11'6"
Dining	3400 x 2920mm	11'2" x 9'7"
Kitchen/Family	5045 x 4150mm	16'6" x 13'7"
Study	2010 x 2920mm	6'7" x 9'7"
WC	850 x 1640mm	2'9" x 5'4"

[Approximate dimensions]



First Floor

Bedroom 1	3550 x 4590mm	11'6" x 15'0"
En suite	1850 x 1900mm	6'1" x 6'3"
Bedroom 2	3700 x 4025mm	12'1" x 13'2"
Bedroom 3	3870 x 2920mm	12'8" x 9'7"
Bedroom 4	2025 x 2920mm	6'8" x 9'7"
Bathroom	2030 x 2275mm	6'8" x 7'5"

[Approximate dimensions]

KEY
 B Boiler
 ST Store
 ◀▶ Dimension location

All images used are for illustrative purposes. These and the dimensions given are illustrative for this house type and individual properties may differ. Please check with your Sales Adviser in respect of individual properties. We give maximum dimensions within each room which includes areas of fixtures and fittings including fitted furniture. These dimensions should not be used for carpet or flooring sizes, appliance spaces or items of furniture. All images, photographs and dimensions are not intended to be relied upon for, nor to form part of, any contract unless specifically incorporated in writing into the contract.

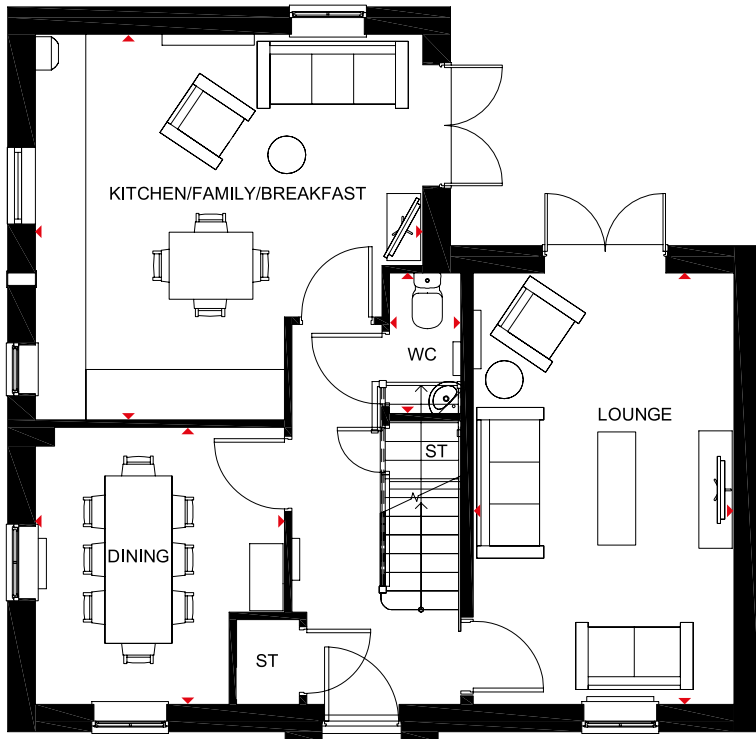
SP399267



ALDERNEY

4 BEDROOM DETACHED HOME

- A large fitted kitchen with family and breakfast area provides this spacious home with the ideal hub for all the family
- French doors leading to the rear garden from both the kitchen and the separate lounge give it a bright and airy feeling, and there is a separate, dual-aspect dining room
- Upstairs are three double bedrooms, the **main** bedroom with en suite, a single bedroom and a family bathroom



Ground Floor

Lounge	3110 x 5150mm	10'2" x 16'11"
Dining	3310 x 2970mm	10'10" x 9'9"
Kitchen/Family/Breakfast	4620 x 4600mm	15'2" x 15'1"
WC	840 x 1675mm	3'9" x 5'6"

(Approximate dimensions)

First Floor

Bedroom 1	3100 x 4600mm	10'2" x 15'1"
En Suite	2075 x 1190mm	6'9" x 3'11"
Bedroom 2	2640 x 4520mm	8'8" x 14'10"
Bedroom 3	3712 x 2785mm	12'2" x 9'1"
Bedroom 4	2275 x 2160mm	7'5" x 7'1"
Bathroom	1695 x 2075mm	5'6" x 6'9"

(Approximate dimensions)

KEY ST Store
 ◀▶ Dimension location

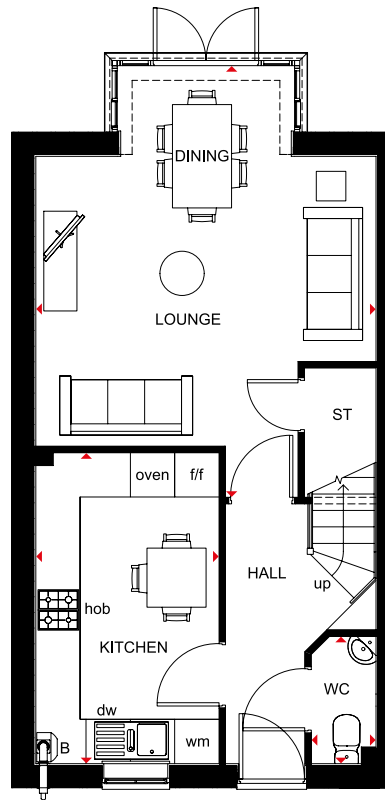
All images used are for illustrative purposes. These and the dimensions given are illustrative for this house type and individual properties may differ. Please check with your Sales Adviser in respect of individual properties. We give maximum dimensions within each room which includes areas of fixtures and fittings including fitted furniture. These dimensions should not be used for carpet or flooring sizes, appliance spaces or items of furniture. All images, photographs and dimensions are not intended to be relied upon for, nor to form part of, any contract unless specifically incorporated in writing into the contract.

SP399270



WOODCOTE 4 BEDROOM HOME

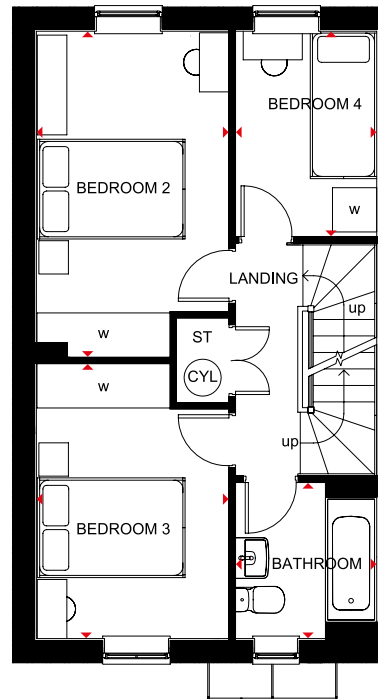
- Spacious home, perfectly designed over three floors for modern living
- A glazed bay in the lounge with dining room opens onto the rear garden and a fitted kitchen includes room for breakfast area
- Two double bedrooms, a single bedroom and bathroom are on the first floor
- Exceptionally spacious main bedroom with en suite and dressing area takes up the entire second floor



Ground Floor

Lounge/Dining	4610 x 5844mm	15'1" x 16'11"
Kitchen	2483 x 4213mm	8'2" x 13'10"
WC	877 x 1728mm	2'11" x 5'8"

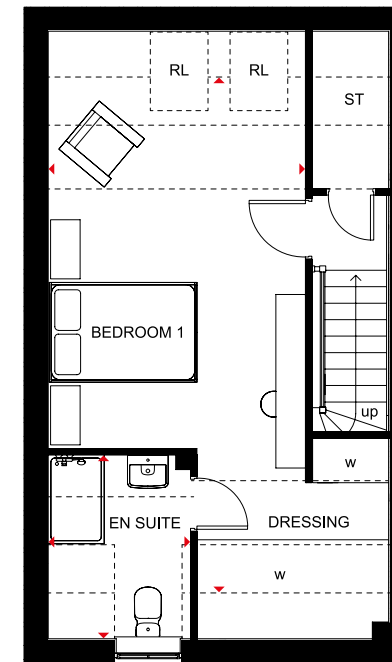
[Approximate dimensions]



First Floor

Bedroom 2	2610 x 4416mm	8'7" x 14'6"
Bedroom 3	2610 x 3724mm	8'7" x 12'3"
Bedroom 4	1912 x 2778mm	6'3" x 9'1"
Bathroom	1912 x 2114mm	6'3" x 6'11"

[Approximate dimensions]



Second Floor

Bedroom 1	3480 x 6985mm*	11'5" x 22'11"*
En Suite	1939 x 2488mm*	6'4" x 8'2"*

[Approximate dimensions]

*Overall floor dimension includes lower ceiling areas.

KEY	B	Boiler	wm	Washing machine space	w	Wardrobe space
	ST	Store	f/f	Fridge/freezer space	RL	Roof light
	CYL	Cylinder	dw	Dishwasher space	↔	Dimension location

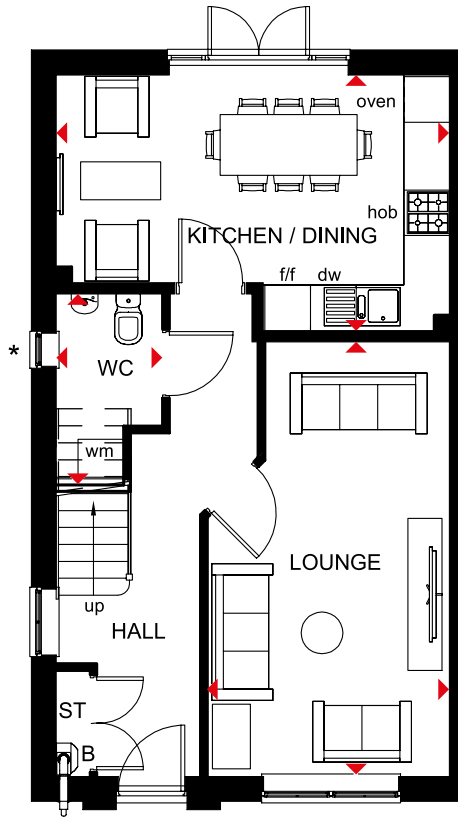
All images used are for illustrative purposes. These and the dimensions given are illustrative for this house type and individual properties may differ. Please check with your Sales Adviser in respect of individual properties. We give maximum dimensions within each room which includes areas of fixtures and fittings including fitted furniture. These dimensions should not be used for carpet or flooring sizes, appliance spaces or items of furniture. All images, photographs and dimensions are not intended to be relied upon for, nor to form part of, any contract unless specifically incorporated in writing into the contract.



OXFORD

4 BEDROOM SEMI DETACHED HOME

- This practical semi-detached home has been designed over three floors
- The ground floor has a large open-plan kitchen and dining room with French doors leading to the rear garden
- The spacious lounge has space for all the family to relax in
- Upstairs are two double bedrooms, a single bedroom and a study on the first floor, and a further double bedroom and shower room on the top floor

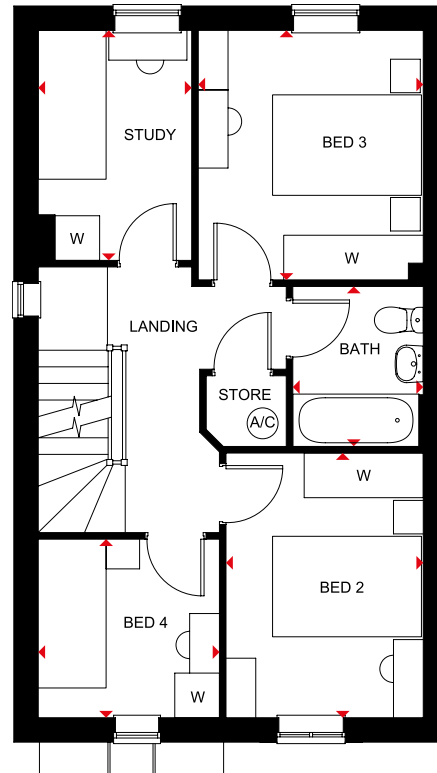


Ground Floor

Kitchen/Dining	3365 x 5173mm	11'0" x 16'11"
Lounge	3185 x 5720mm	10'5" x 18'9"
WC	1398 x 2512mm	4'7" x 8'3"

[Approximate dimensions]

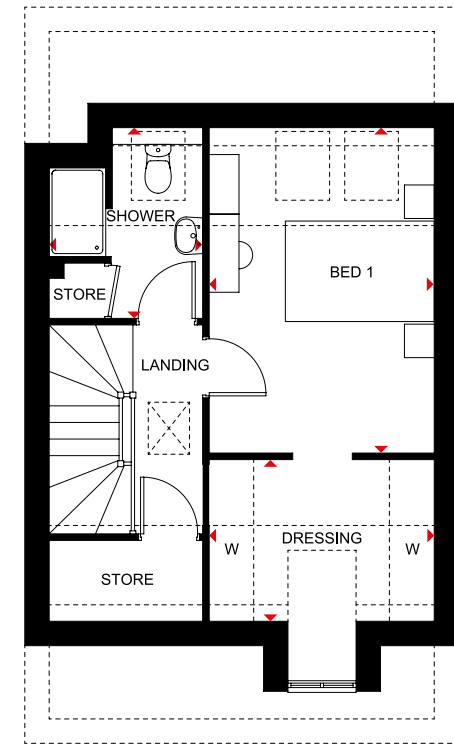
* Window W3 omitted Plots 63 & 83



First Floor

Study	2062 x 3091mm	6'9" x 10'1"
Bedroom 2	2650 x 3556mm	8'8" x 11'8"
Bedroom 3	3023 x 3353mm	9'11" x 11'0"
Bedroom 4	2435 x 2399mm	7'11" x 7'10"
Bathroom	1753 x 2150mm	5'9" x 7'0"

[Approximate dimensions]



Second Floor

Bedroom 1	3023 x 4372mm	9'11" x 14'4"
Dressing	3023 x 3574mm	9'11" x 11'8"
Shower Room	2062 x 2563mm	6'9" x 8'4"

[Approximate dimensions]

*Overall floor dimension includes lower ceiling areas

KEY	B	Boiler	wm	Washing machine space	◀▶	Dimension location
	ST	Store	f/f	Fridge/freezer space	RL	Rooflight
	CYL	Cylinder	dw	Dishwasher space		

All images used are for illustrative purposes. These and the dimensions given are illustrative for this house type and individual properties may differ. Please check with your Sales Adviser in respect of individual properties. We give maximum dimensions within each room which includes areas of fixtures and fittings including fitted furniture. These dimensions should not be used for carpet or flooring sizes, appliance spaces or items of furniture. All images, photographs and dimensions are not intended to be relied upon for, nor to form part of, any contract unless specifically incorporated in writing into the contract.

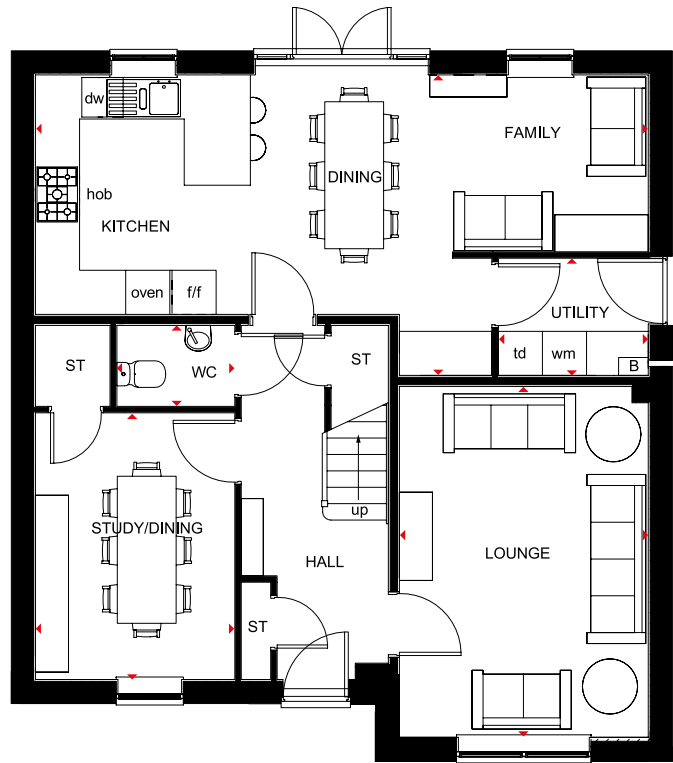
SP422309



LAMBERTON

5 BEDROOM DETACHED HOME

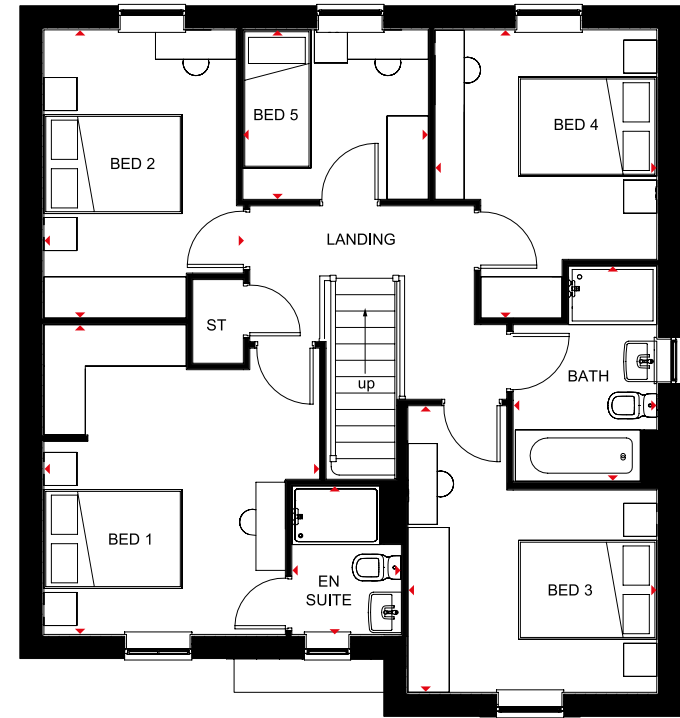
- Spacious family home where flexibility is the key
- Large open-plan kitchen with family area and access to the garden, as well as space for dining
- Front-aspect, separate lounge, and study or formal dining room
- Four double bedrooms - the **main** with en suite - a single bedroom and the family bathroom with shower are on the first floor



Ground Floor

Lounge	3385 x 4773mm	11'1" x 15'8"
Kitchen/Dining/ Family	8335 x 4088mm	27'4" x 13'5"
Study/Dining	2712 x 3627mm	8'11" x 11'11"
Utility	2039 x 1595mm	6'8" x 5'3"
WC	1501 x 1101mm	4'11" x 3'7"

[Approximate dimensions]



First Floor

Bedroom 1	3750 x 4214mm	12'4" x 13'10"
En suite	1490 x 2023mm	4'11" x 6'8"
Bedroom 2	2713 x 3921mm	8'11" x 12'10"
Bedroom 3	3385 x 3898mm	11'1" x 12'9"
Bedroom 4	3018 x 3921mm	9'11" x 12'10"
Bedroom 5	2523 x 2305mm	8'3" x 7'7"
Bathroom	1953 x 2931mm	6'5" x 9'7"

[Approximate dimensions]

KEY	B	Boiler	f/f	Fridge/freezer space	◀▶	Dimension location
	ST	Store	dw	Dishwasher space		
			wm	Washing machine space		
			td	Tumble dryer space		

All images used are for illustrative purposes. These and the dimensions given are illustrative for this house type and individual properties may differ. Please check with your Sales Adviser in respect of individual properties. We give maximum dimensions within each room which includes areas of fixtures and fittings including fitted furniture. These dimensions should not be used for carpet or flooring sizes, appliance spaces or items of furniture. All images, photographs and dimensions are not intended to be relied upon for, nor to form part of, any contract unless specifically incorporated in writing into the contract.

SP399520



THE CONSUMER CODE

The Consumer Code for Home Builders ("the Code"), which came into effect in April 2010, applies to all home builders registered with the UK's main new Home Warranty Bodies: NHBC, Premier Guarantee and LABC Warranty.

The Code gives protection and rights to purchasers of new homes. It requires all new home buyers to be treated fairly and ensure they are fully informed about their purchase before and after they sign the contract.

The aim of the Code is for all new home buyers to:

- be treated fairly
- know what levels of service to expect
- be given reliable information about their purchase and their consumer rights before and after they move in
- know how to access speedy, low-cost dispute resolution arrangements to deal with complaints about breaches of the Code.

The Code reinforces best practice among home builders to encourage a consistently high level of information and customer service. It builds on successful efforts already made by the industry to improve consumer satisfaction in recent years.

The Code covers every stage of the home-buying purchase – pre-contract, exchange of contract and during occupation.

As a 5 Star Housebuilder, we are committed to the Consumer Code for Home Builders. For more information on the Consumer Code for Home Builders, please visit <http://www.consumercode.co.uk/>



barratthomes.co.uk

0333 3558 500

IMPORTANT NOTICE:

These particulars are for illustration only. We operate a policy of continuous product development and individual features such as windows and elevational treatments may vary from time to time. Consequently these particulars should be treated as general guidance only and cannot be relied upon as accurately describing any of the Specified Matters prescribed by any Order made under the Property Misdescriptions Act 1991. Nor do they constitute a contract, part of a contract or a warranty. Computer generated images are indicative only and do not accurately depict individual plots. Photography depicts typical David Wilson Homes developments. Photography, computer generated imagery and floorplans depicts a representation of the interiors, they are indicative only and do not accurately depict a specific plot. As such they are not intended to be used for carpet sizes, appliances, spaces or items of furniture. Every effort has been made to give an accurate representation of the plot layouts with final dimensions due for release. Please check with the Sales Adviser at point of sale for final confirmed dimensions of the specific plot. Kitchen designs are indicative only and are subject to change. Travel times and distances are as sourced from Google Maps.co.uk.

We are the only major national housebuilder to be awarded this key industry award 13 years in a row. "We" refers to the Barratt Developments PLC group brands including Barratt London, Barratt Homes and David Wilson Homes. Based on HBF star rating scheme from 2010 to 2022 derived from the NHBC national new homes survey at eight weeks, over 90% of Barratt Developments PLC group customer would recommend our brands to a friend.



BARRATT
HOMES