

TO LET

HERON

ROAD

Sowton Industrial Estate EXETER EX2 7NF



26,079 ft² (2,423 m²) plus mezzanine



Manufacturing / warehouse / distribution



Short term or long term lease available



Accessible location close to M5



A30

J29

M5

J30

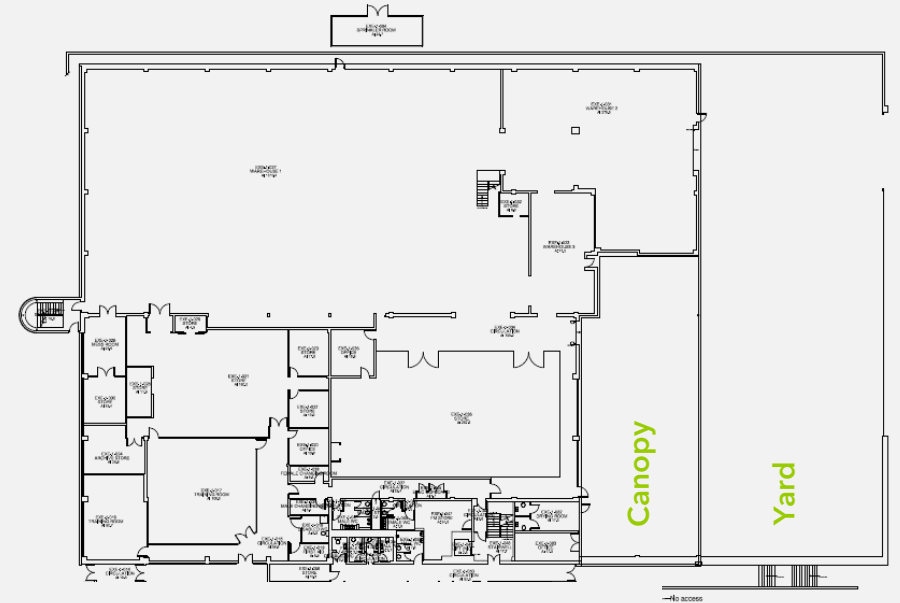
SOWTON INDUSTRIAL ESTATE



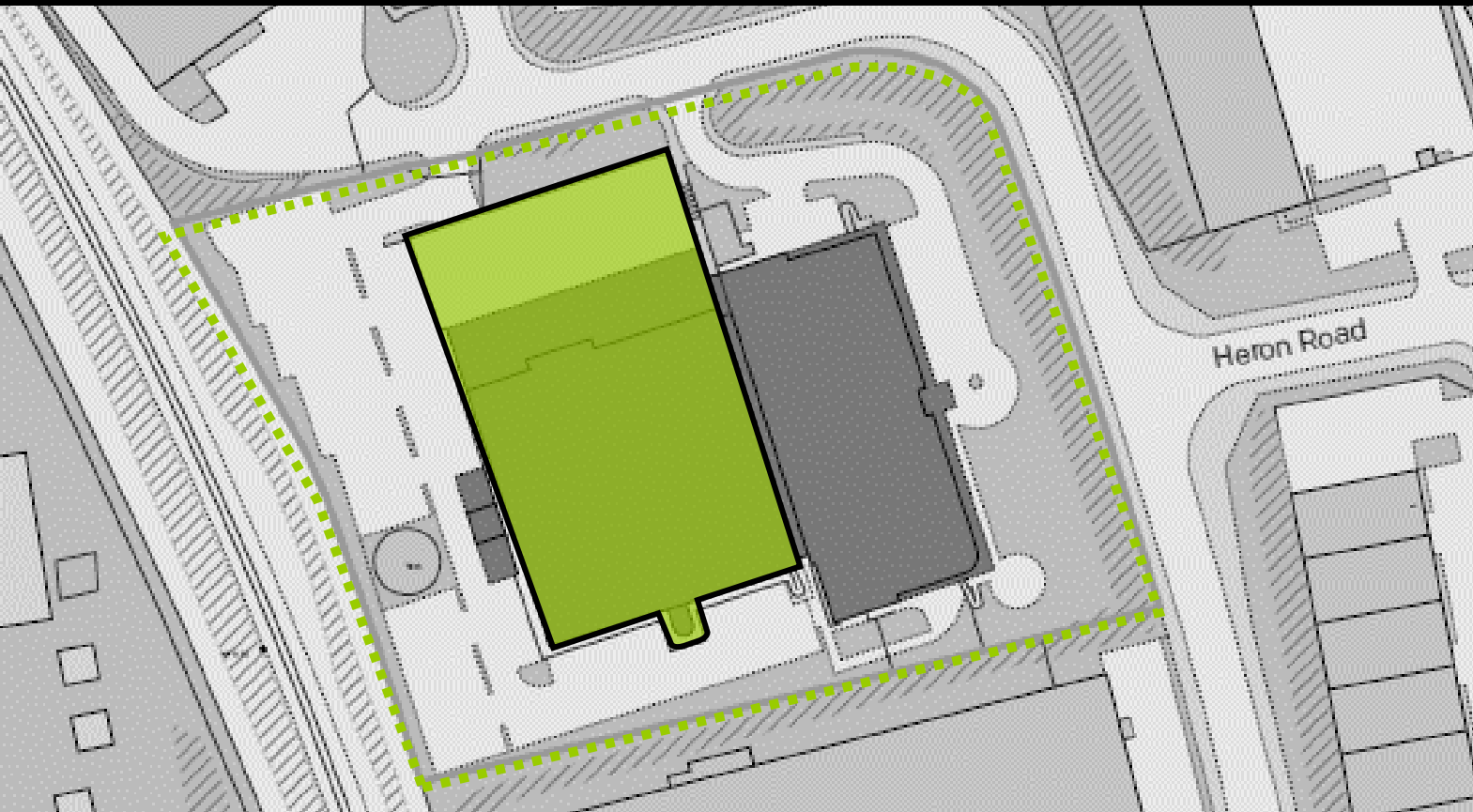
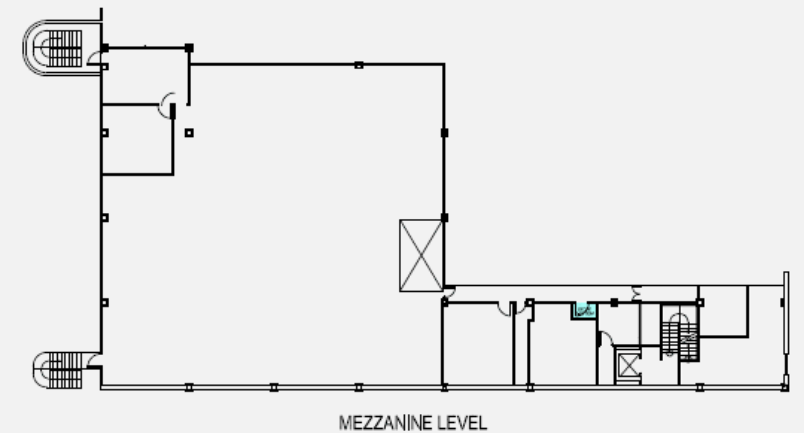
ACCOMMODATION

| Areas - GIA | m ² | ft ² |
|---|----------------|-----------------|
| Upper floor warehouses, stores, training rooms | 2,423 | 26,079 |
| Mezzanine | 706 | 7,599 |
| Total | 6,258 | 33,678 |
| Canopy | 332 | 3,571 |

Upper Ground Floor



Mezzanine Level



TENURE AND TERMS

The property is immediately available on a new lease for terms to be agreed. Proposals can be given to individual applicant based on lease term requirement.

ANTI-MONEY LAUNDERING

Anti-money laundering ('AML') legislation require estate and letting agents to verify the identities of parties involved in property transactions and to determine the legality of funds supporting a property transaction.

A party interested in this property transaction must provide certain AML information and documents to the vendor's agent. This also includes documents on those who may run and own the interested party, or the ultimate beneficiary of the property transaction.





CONTACT



Tim Western
M: 07711 851459
tim.western@jll.com



Katie Purrington
M: 07513 482451
katie.purrington@jll.com

DISCLAIMER
The material herein is intended as a guide only, no liability for negligence or otherwise is assumed for the material contained herein by Jones Lang LaSalle, its principal or its servants or its agents. No material contained herein shall form the basis of or be part of any agreement and no warranty is given or implied as to the accuracy of the whole or any part of the material. Prospective purchasers/tenants should not rely on the material but should make their own enquiries and satisfy themselves of all aspects of the material. Any liability by Jones Lang LaSalle, its principal, its servants or its agents in any way connected with the brochure, whether or not such liability results from or involves negligence, will not exceed \$1000.
June 2024