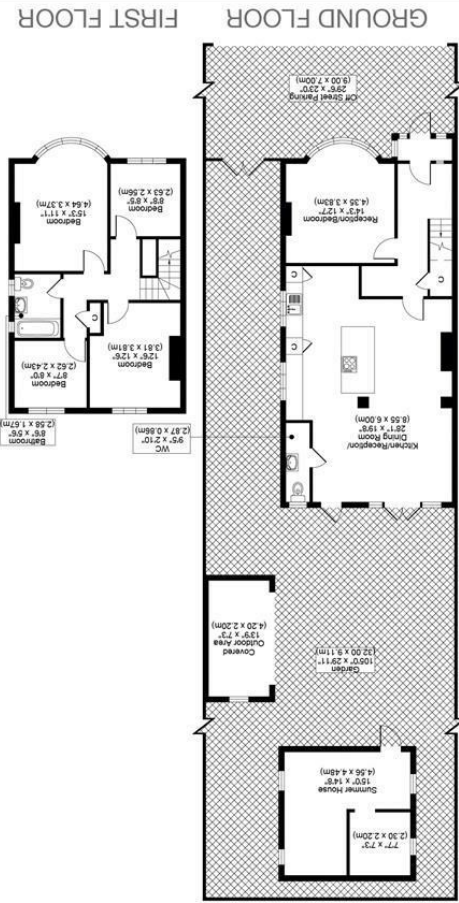




CHRISTIES



ALBERTA AVENUE, SM1
TOTAL APPROX FLOOR PLAN AREA INCLUDING OUTBUILDINGS 1730 SQ.FT (161 SQ.M)
TOTAL APPROX FLOOR PLAN AREA EXCLUDING OUTBUILDINGS 1411 SQ.FT (131 SQ.M)



All measurements, walls, doors, windows, fittings and their appliances, their size and locations are shown conventionally and are approximate only and cannot be regarded as being a representation either by the seller or his agent.

optica
MEDIA
optimedia.co.uk

CHRISTIES



RICS

rightmove

zoopla.co.uk

onTheMarket.com

MAYFAIR
OFFICE.CO.UK



www.centro.plc.uk | Telephone 020 8401 5000
www.christiesworld.com | Telephone 020 8643 7777

CHAIN FREE
LOCATED IN THE CHARMING AREA OF CHEAM, THIS IMPRESSIVE, DETACHED HOUSE OFFERS A PERFECT BLEND OF SPACE AND MODERN LIVING. WITH FIVE GENEROUSLY SIZED BEDROOMS, THIS PROPERTY IS IDEAL FOR FAMILIES SEEKING COMFORT AND CONVENIENCE. THE HEART OF THE HOME IS A SPACIOUS OPEN-PLAN MODERN KITCHEN, WHICH SEAMLESSLY CONNECTS TO TWO INVITING RECEPTION ROOMS, PROVIDING AMPLE SPACE FOR BOTH RELAXATION AND ENTERTAINING.

THE PROPERTY BOASTS A LARGE GARDEN, PERFECT FOR CHILDREN TO PLAY AND FOR FAMILY GATHERINGS, MAKING IT AN IDEAL OUTDOOR SPACE FOR THOSE SUNNY DAYS. ADDITIONALLY, THERE IS PARKING AVAILABLE FOR TWO VEHICLES, ENSURING THAT YOU AND YOUR GUESTS CAN COME AND GO WITH EASE.

SITUATED WITHIN WALKING DISTANCE TO CHEAM VILLAGE, RESIDENTS WILL ENJOY EASY ACCESS TO A VARIETY OF SHOPS, CAFES, AND AMENITIES. THE AREA IS ALSO RENOWNED FOR ITS EXCELLENT SCHOOLS, MAKING IT A DESIRABLE LOCATION FOR FAMILIES. FURTHERMORE, LOCAL PARKS ARE JUST A STONE'S THROW AWAY, OFFERING BEAUTIFUL GREEN SPACES FOR LEISURELY STROLLS AND OUTDOOR ACTIVITIES.

THIS DELIGHTFUL HOME IN CHEAM PRESENTS A WONDERFUL OPPORTUNITY FOR THOSE LOOKING TO SETTLE IN A VIBRANT COMMUNITY WHILE ENJOYING THE COMFORTS OF A SPACIOUS AND MODERN LIVING ENVIRONMENT. DO NOT MISS THE CHANCE TO MAKE THIS HOUSE YOUR NEW FAMILY HOME.

CALL CHRISTIES TODAY ON 0208 770 1625.

- LARGE 5-BED SEMI-DETACHED
- MODERN STYLE THROUGHOUT
- WALKING DISTANCE TO CHEAM VILLAGE
- COUNCIL TAX BAND E
- EPC RATING D

