



www.centro-pic.uk | Telephone 020 8401 5000
www.christiesworld.com | Telephone 020 8643 7777

MAYFAIR
OFFICE.CO.UK

onTheMarket.com

zoopla.co.uk

rightmove

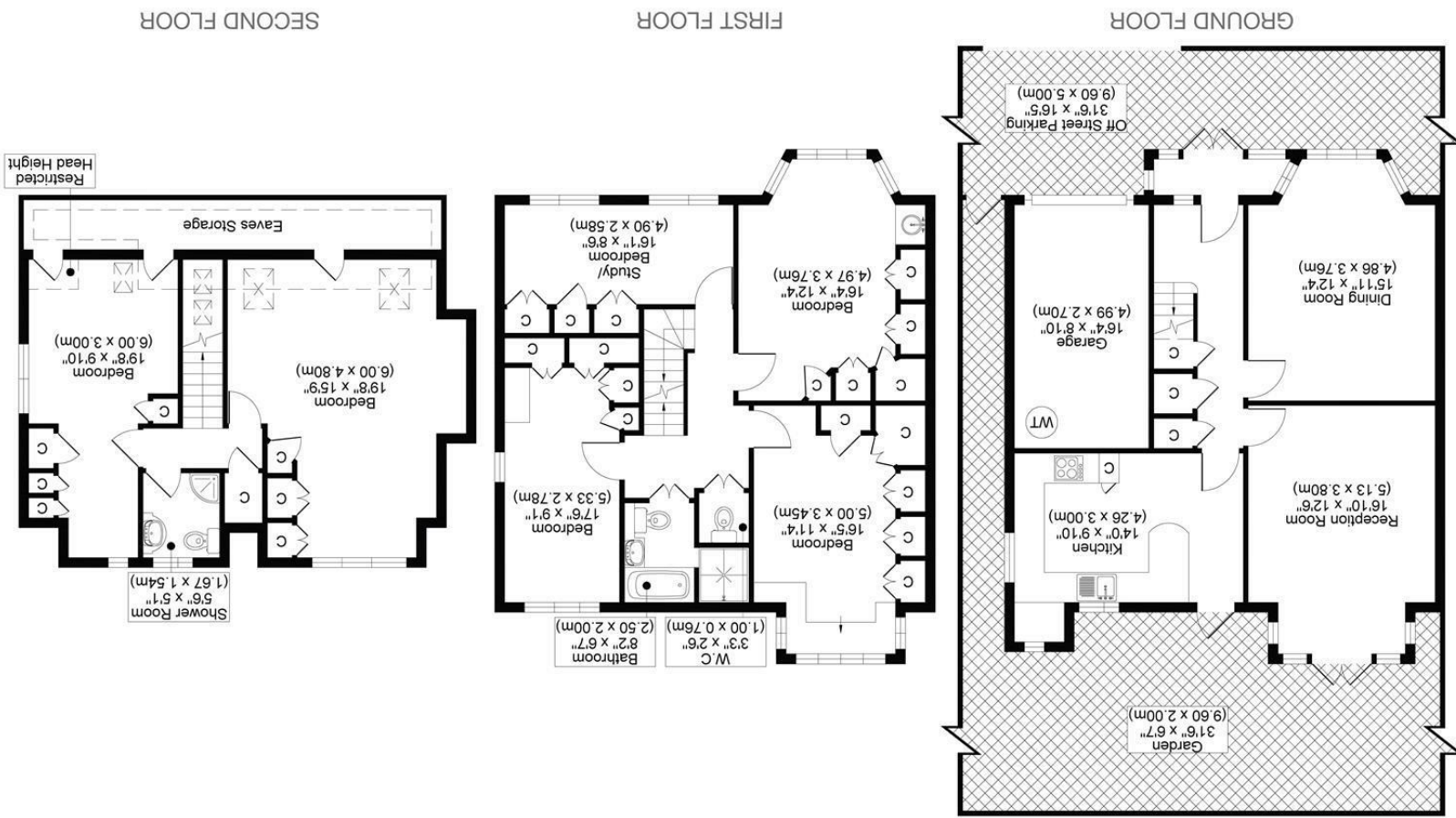
RICS

The Property Ombudsman

CHRISTIES

optica
MEDIA
optimedia.co.uk

All measurements, walls, doors, windows, fittings and their appliances, their size and locations are shown conventionally and are approximate only and cannot be regarded as being a representation either by the seller or his agent.



QUARRY PARK ROAD, SM1
TOTAL APPROX FLOOR PLAN AREA INCLUDING GARAGE & EAVES STORAGE & RESTRICTED HEAD HEIGHT 2214 SQ.FT (206 SQ.M)
TOTAL APPROX FLOOR PLAN AREA EXCLUDING GARAGE & EAVES STORAGE & RESTRICTED HEAD HEIGHT 1918 SQ.FT (178 SQ.M)



CHRISTIES



****GUIDE PRICE £1,000,000 - £1,100,000****
LOCATED ON THE HIGHLY DESIRABLE QUARRY PARK ROAD IN SURREY, THIS IMPRESSIVE DETACHED HOUSE OFFERS THE PERFECT BLEND OF SPACE, COMFORT, AND STYLE.

WITH SIX GENEROUSLY SIZED DOUBLE BEDROOMS, EACH FEATURING BUILT-IN WARDROBES, THE PROPERTY PROVIDES IDEAL ACCOMMODATION FOR FAMILIES SEEKING ROOM TO GROW. TWO SPACIOUS RECEPTION ROOMS OFFER VERSATILE LIVING AREAS, PERFECT FOR BOTH RELAXING EVENINGS AND ENTERTAINING GUESTS. TWO WELL-APPOINTED BATHROOMS ADD CONVENIENCE AND A TOUCH OF LUXURY TO EVERYDAY LIFE.

ONE OF THE HOME'S STANDOUT FEATURES IS ITS BEAUTIFUL GARDEN – A PRIVATE OUTDOOR SPACE IDEAL FOR FAMILY GATHERINGS, GARDENING, OR SIMPLY UNWINDING IN PEACE. FROM THE HOUSE ITSELF, YOU CAN ENJOY PICTURESQUE VIEWS ACROSS SEARS PARK, CREATING A WONDERFUL SENSE OF OPENNESS AND CONNECTION TO NATURE.

THE PROPERTY ALSO OFFERS AMPLE PARKING FOR SEVERAL VEHICLES, ADDING PRACTICALITY TO ITS APPEAL.

MORE THAN JUST A PLACE TO LIVE, THIS HOME IS A TRUE SANCTUARY – COMBINING COMFORT, ELEGANCE, AND GENEROUS LIVING SPACE IN A SOUGHT-AFTER SURREY LOCATION. WITH ITS EXCEPTIONAL LAYOUT, BEAUTIFUL GARDEN, AND PROXIMITY TO LOCAL AMENITIES, THIS PROPERTY IS A RARE FIND NOT TO BE MISSED.

- VIEWS OVER SEARS PARK
- SOUGHT AFTER LOCATION
- SIX DOUBLE BEDROOMS
- COUNCIL TAX BAND F
- EPC RATING: D

