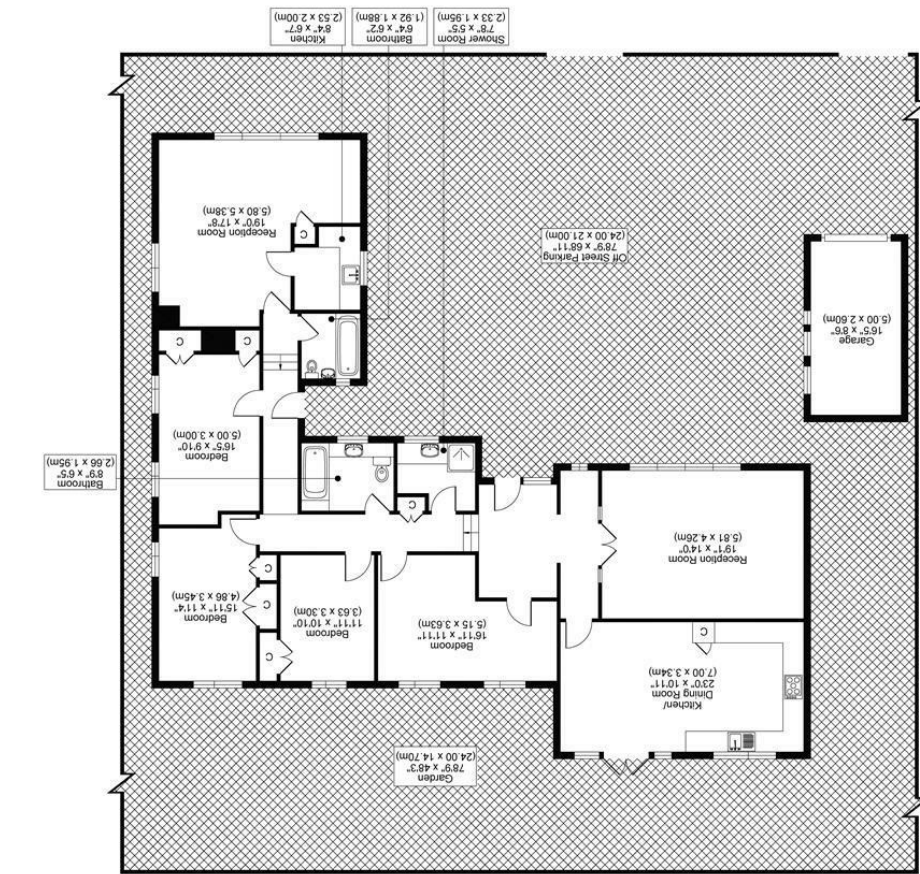




CHRISTIES



BURDON LANE, SM2
TOTAL APPROX FLOOR PLAN AREA INCLUDING GARAGE 2080 SQ.FT (193 SQ.M)
TOTAL APPROX FLOOR PLAN AREA EXCLUDING GARAGE 1940 SQ.FT (180 SQ.M)

GROUND FLOOR

All measurements, walls, doors, windows, fittings and their appliances, their size and locations are shown conventionally and are approximate only and cannot be regarded as being a representation either by the seller or his agent.

optica
MEDIA
optimedia.co.uk



www.centro-pic.uk | Telephone 020 8401 5000
www.christiesworld.com | Telephone 020 8643 7777

CHRISTIES

BURDON LANE, SOUTH CHEAM SM2 7PP

OFFERS IN EXCESS OF £1,100,000

LOCATED JUST MOMENTS FROM THE HEART OF VIBRANT CHEAM VILLAGE, THIS EXQUISITE, DETACHED BUNGALOW PERFECTLY BLENDS STYLE, SPACE, AND CONVENIENCE. BOASTING TWO ELEGANT RECEPTION ROOMS AND A GENEROUS KITCHEN-DINER, IT OFFERS VERSATILE SPACE FOR RELAXING, DINING, AND ENTERTAINING.

THE HOME FEATURES FOUR SPACIOUS BEDROOMS AND THREE WELL-APPOINTED BATHROOMS, PROVIDING COMFORT AND FLEXIBILITY FOR FAMILY LIFE OR HOSTING GUESTS. LARGE WINDOWS FILL THE INTERIORS WITH NATURAL LIGHT, CREATING A WARM AND INVITING ATMOSPHERE THROUGHOUT.

OUTSIDE, THE PRIME LOCATION PUTS CHEAM VILLAGE'S SHOPS, CAFES, AND LOCAL AMENITIES ALL WITHIN EASY REACH, MAKING DAILY LIFE BOTH CONVENIENT AND ENJOYABLE.

THIS BUNGALOW IS MORE THAN A HOME—IT'S A LIFESTYLE. OFFERING A PEACEFUL RETREAT WHILE KEEPING YOU CONNECTED TO THE COMMUNITY, IT'S IDEAL FOR DOWNSIZERS OR FAMILIES SEEKING BOTH SPACE AND SOPHISTICATION. DON'T MISS THE OPPORTUNITY TO MAKE THIS EXCEPTIONAL PROPERTY YOUR OWN.

- DETACHED BUNGALOW JUST MOMENTS FROM CHEAM VILLAGE.
- FOUR GENEROUS BEDROOMS AND THREE BEAUTIFULLY APPOINTED BATHROOMS.
- TWO ELEGANT RECEPTION ROOMS AND A SPACIOUS KITCHEN-DINER.
- PERFECT BLEND OF PEACEFUL LIVING AND CONVENIENT ACCESS TO SHOPS, CAFES, AND AMENITIES.
- EPC RATING D
- COUNCIL TAX BAND G

