



www.centro-pic.uk | Telephone 020 8401 5000  
 www.christiesworld.com | Telephone 020 8643 7777

MAYFAIR OFFICE.CO.UK

OnTheMarket.com

zoopla.co.uk

rightmove

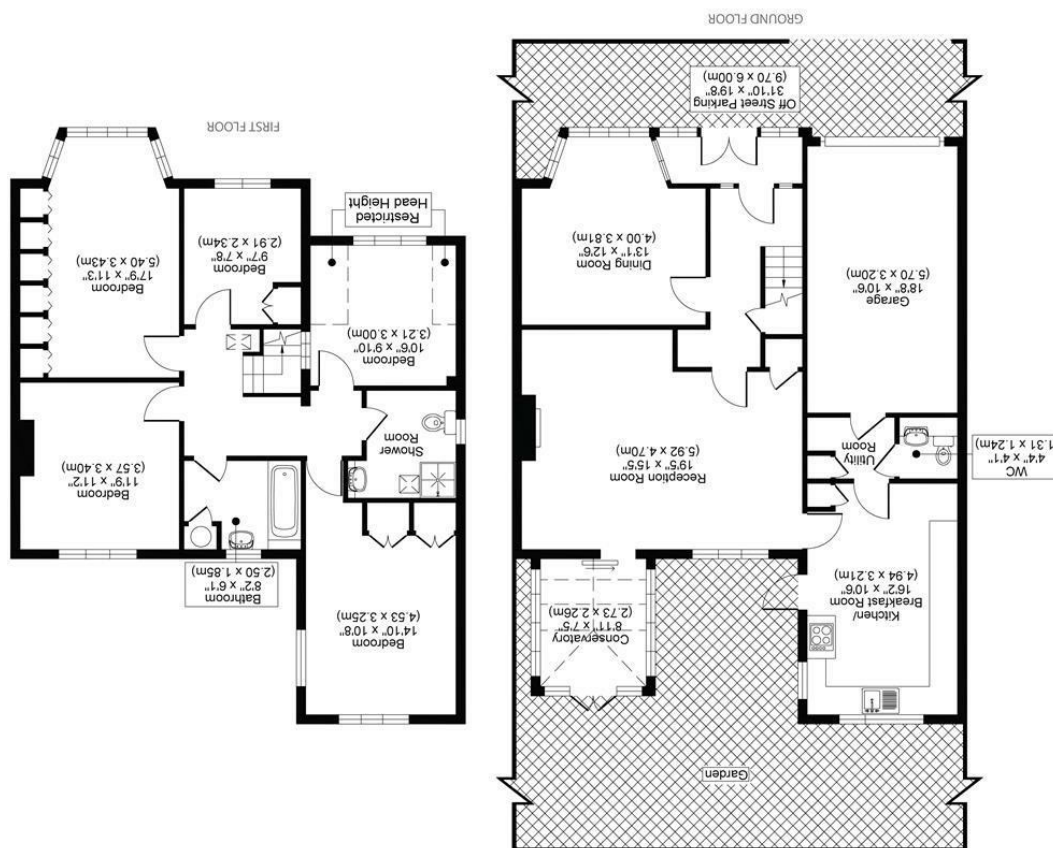
RICS

The Property Ombudsman

CHRISTIES

optica MEDIA optica.co.uk

All measurements, walls, doors, windows, fittings and their appliances, their size and locations are shown conventionally and are approximate only and cannot be regarded as being a representation either by the seller or his agent.



WICKHAM AVENUE, SM3  
 TOTAL APPROX FLOOR PLAN AREA INCLUDING RESTRICTED HEAD HEIGHT AND GARAGE 1,938 SQ.FT (180 SQ.M)  
 TOTAL APPROX FLOOR PLAN AREA EXCLUDING RESTRICTED HEAD HEIGHT AND GARAGE 1,701 SQ.FT (158 SQ.M)



CHRISTIES



**\*\* GUILD PRICE £900,000 TO £950,000 \*\***

WELCOME TO WICKHAM AVENUE, CHEAM - A DELIGHTFUL LOCATION OFFERING THE PERFECT BLEND OF COMFORT AND CONVENIENCE. THIS SEMI-DETACHED HOUSE BOASTS AMPLE SPACE WITH TWO RECEPTION ROOMS, FIVE BEDROOMS, AND TWO BATHROOMS SPREAD ACROSS 1,786 SQ FT.

ONE OF THE STANDOUT FEATURES OF THIS PROPERTY IS THE PARKING PROVISION FOR TWO VEHICLES, ENSURING YOU NEVER HAVE TO WORRY ABOUT FINDING A SPOT. ADDITIONALLY, THE PROXIMITY TO OUTSTANDING LOCAL SCHOOLS MAKES IT AN IDEAL CHOICE FOR FAMILIES LOOKING TO SETTLE IN A VIBRANT COMMUNITY.

IMAGINE WAKING UP TO THE SERENE VIEWS OF NONSUCH PARK RIGHT IN YOUR BACKYARD. THE LUSH GREENERY AND TRANQUIL SURROUNDINGS PROVIDE A PEACEFUL RETREAT FROM THE HUSTLE AND BUSTLE OF EVERYDAY LIFE.

WHETHER YOU ARE LOOKING FOR A SPACIOUS FAMILY HOME OR A CHARMING PROPERTY WITH GREAT POTENTIAL, THIS HOUSE ON WICKHAM AVENUE TICKS ALL THE BOXES. DO NOT MISS OUT ON THE OPPORTUNITY TO MAKE THIS HOUSE YOUR HOME SWEET HOME.

- 5 BEDROOMS
- 2 BATHROOMS
- OUTSTANDING LOCAL SCHOOLS
- BACKING NONSUCH PARK
- EPC RATING C
- COUNCIL TAX BAND F

