



www.centro-pic.uk | Telephone 020 8401 5000  
 www.christiesworld.com | Telephone 020 8643 7777

MAYFAIR OFFICE.CO.UK

onTheMarket.com

zoopla.co.uk

rightmove

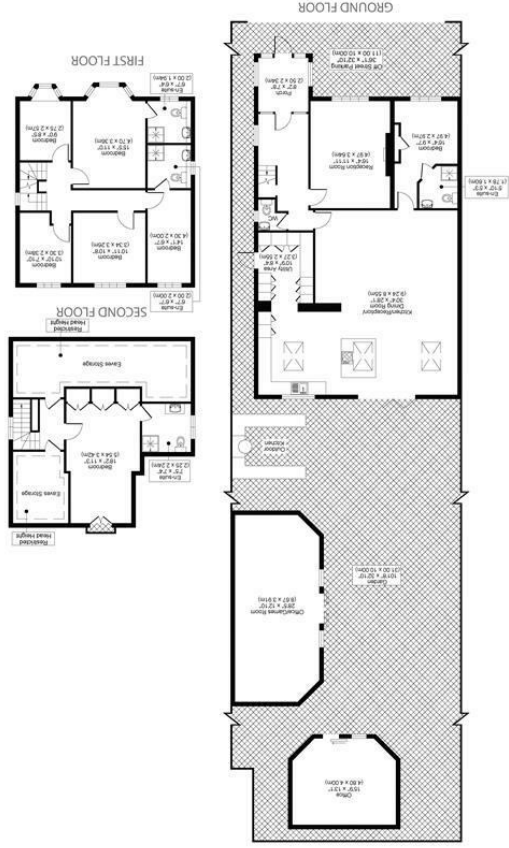
RICS

The Property Ombudsman

CHRISTIES

optica MEDIA  
 optimedia.co.uk

All measurements, walls, doors, windows, fittings and their appliances, their size and locations are shown conventionally and are approximate only and cannot be regarded as being a representation either by the seller or his agent.



NORTHEY AVENUE, SM2  
 TOTAL APPROX FLOOR PLAN AREA INCLUDING RESTRICTED HEAD HEIGHT, EAVES STORAGE AREAS AND GARDEN OFFICES 3,348 SQ.FT (311 SQ.M)  
 (EXCLUDING OUTDOOR KITCHEN)  
 TOTAL APPROX FLOOR PLAN AREA EXCLUDING RESTRICTED HEAD HEIGHT AND EAVES STORAGE AREAS AND GARDEN OFFICES 2,476 SQ.FT (230 SQ.M)  
 (EXCLUDING OUTDOOR KITCHEN)



CHRISTIES



ONCE IN A WHILE WE HAVE THE DISTINCT PRIVILEGE TO BE ABLE TO OFFER FOR SALE AN EXCEPTIONAL PROPERTY IN EXCEPTIONAL CONDITION - THIS IS ONE SUCH HOME.

WE ARE DELIGHTED TO BE ABLE TO OFFER THIS SUBSTANTIAL THREE STOREY, SEVEN BEDROOM/FOUR-BATHROOM FAMILY HOME BENEFITTING FROM A TOP FLOOR MASTER BEDROOM SUITE AND ALSO OFFERING A GENEROUS GROUND FLOOR BEDROOM - AGAIN WITH EN-SUITE. MAIN FEATURES OF THE PROPERTY INCLUDE A SPECTACULAR REAR-FACING KITCHEN/RECEPTION/DINING ROOM AND A WONDERFUL REAR GARDEN INCORPORATING TWO SUPERB OUTBUILDINGS, IDEAL FOR USE AS OFFICES (ONE IS CURRENTLY SET UP AS A GAMES ROOM).

ONE LOOK AT THE PHOTOS AND VIDEO WILL, WE ARE SURE, CONVINCED YOU THAT THIS IS A HOME YOU SIMPLY MUST SEE! CALL US TODAY TO CONFIRM YOUR VIEWING ON 0208 770 1625.

- SEVEN BEDROOMS AND FOUR BATHROOMS
- SPECTACULAR REAR FACING FAMILY KITCHEN/RECEPTION/DINING ROOM
- HOMES OF THIS QUALITY ARE RARE IN THE CURRENT MARKET
- COUNCIL TAX BAND F
- EPC RATING C

