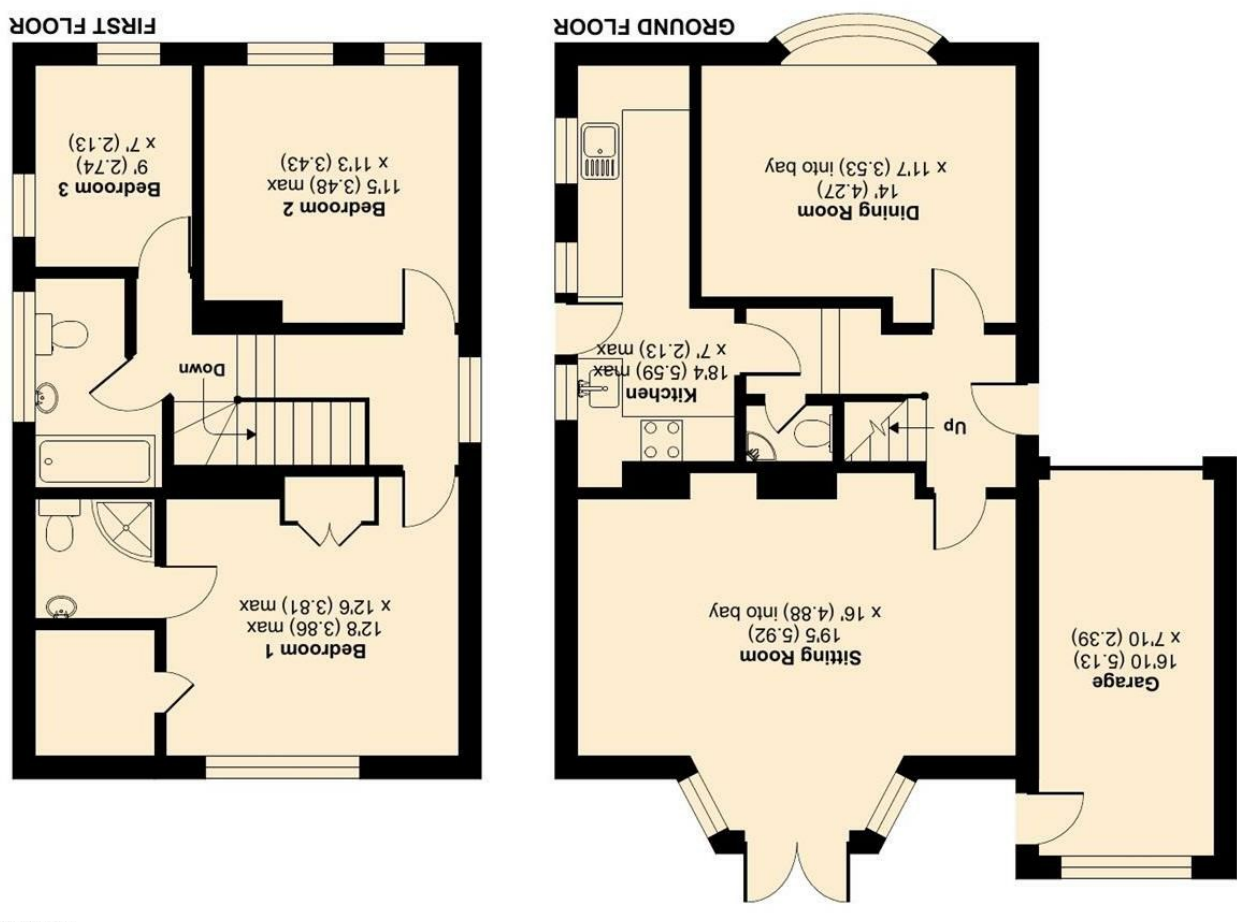


Floor plan produced in accordance with RICS Property Measurement Standards incorporating International Property Measurement Standards (IPMS2 Residential). © nchecom 2023. RICS Certified Property Measurer REF: 522171



Tudor Close, Cheam, Sutton, SM3
Approximate Area = 1476 sq ft / 137.1 sq m
For identification only - Not to scale



****GUIDE PRICE £700,000 TO £750,000****

****VERY UNEXPECTEDLY BACK ON THE MARKET****

AN ATTRACTIVE CHARACTER DETACHED DUTCH BARN STYLE HOME ENVIABLY LOCATED JUST ONE HOUSE AWAY FROM A GATE TO THE EVER POPULAR CHEAM PARK. THE PROPERTY OFFERS THREE BEDROOMS, THE MASTER BEDROOM HAVING AN EN-SUITE SHOWER ROOM PLUS A WALK IN WARDROBE/DRESSING ROOM. THERE IS ALSO A FULL UPSTAIRS BATHROOM AS WELL AS A SEPARATE GROUND FLOOR WC. TWO FINE RECEPTION ROOMS AND A WELL FITTED KITCHEN COMPLETE THE ACCOMMODATION, AND THE PROPERTY IS FURTHER ENHANCED BY A LOVELY REAR GARDEN AND OFF STREET PARKING AT THE FRONT LEADING TO A SIDE GARAGE. NOT TO BE MISSED, CALL US TODAY TO RESERVE YOUR VIEWING APPOINTMENT.

- WONDERFUL CHARACTER DETACHED DUTCH BARN STYLE HOME CLOSE TO GATE TO CHEAM PARK
- THREE BEDROOMS - ONE WITH EN-SUITE DRESSING ROOM AND SHOWER ROOM
- TWO EXCELLENT RECEPTION ROOMS, THE LOUNGE LOOKING OUT ONTO AN ATTRACTIVE REAR GARDEN
- OFF STREET PARKING AND GARAGE
- CLOSE TO LOCAL SHOPS AND TRANSPORT LINKS - EARLY VIEWING RECOMMENDED
- EPC RATING - D
- COUNCIL TAX BAND E

