

75 ETON HILL ROAD

RADCLIFFE, MANCHESTER, M26 2XQ





Charming 2-Bedroom End-of-Terrace House

Ideal Investment Opportunity

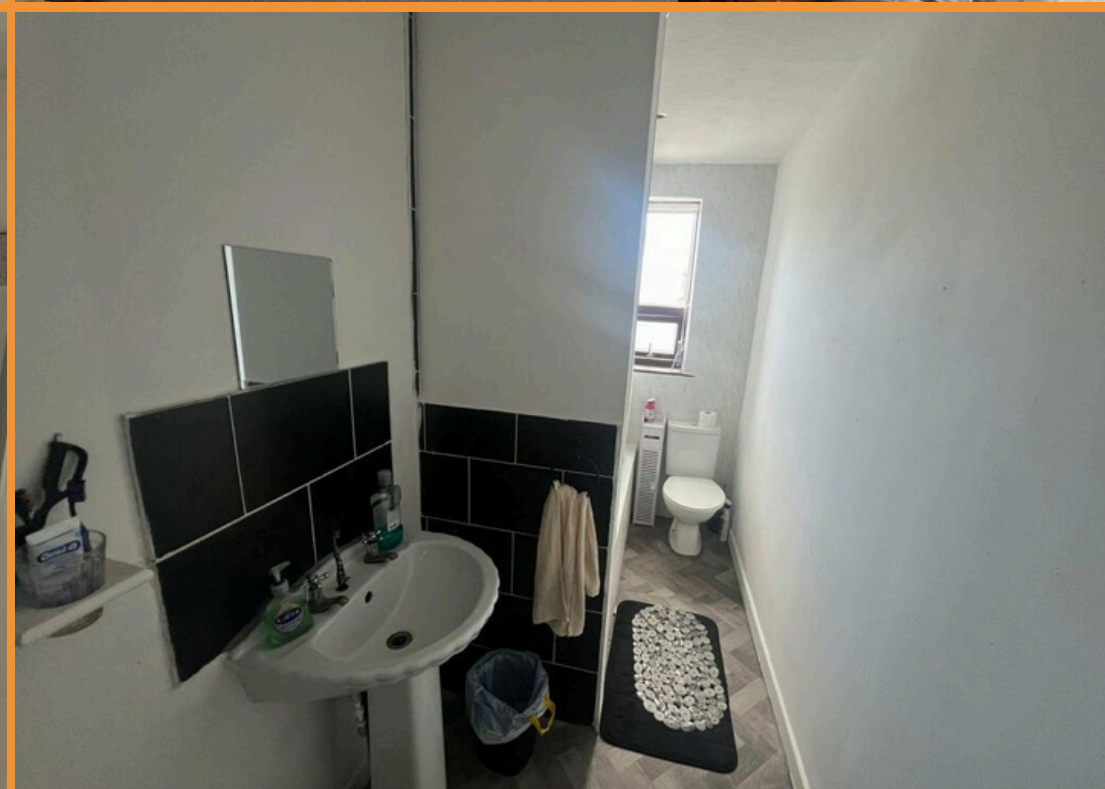
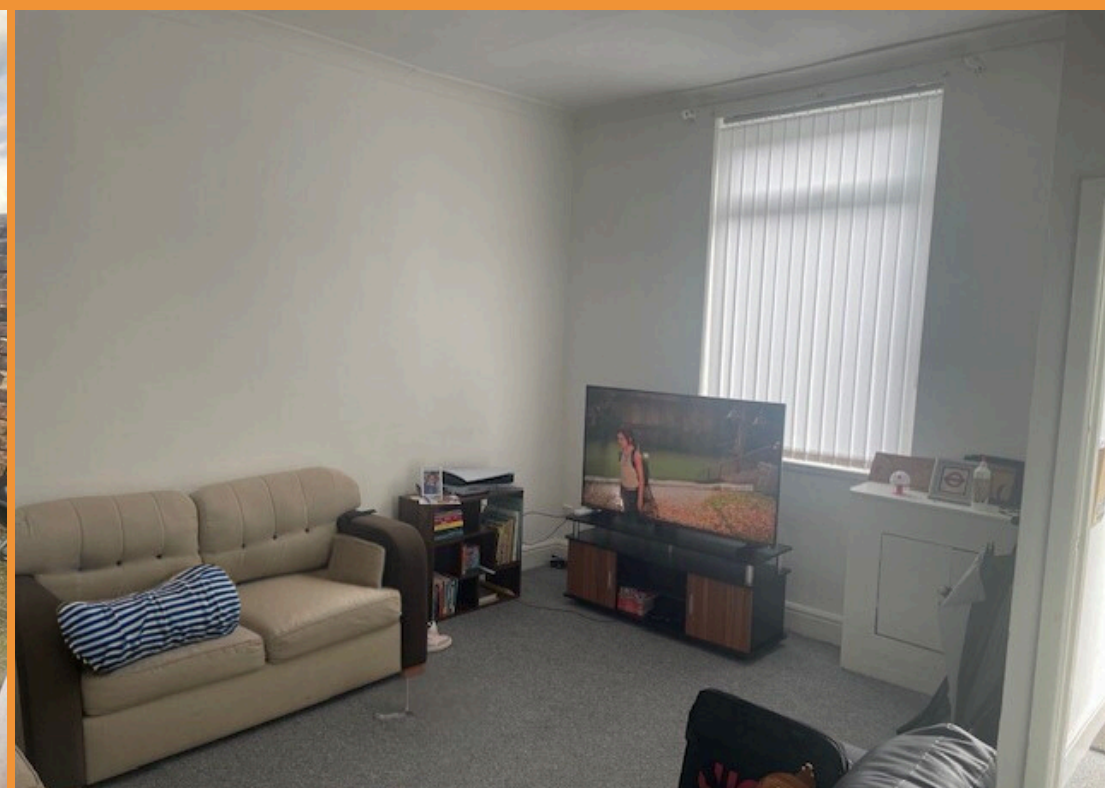
Nestled in a popular residential area of Radcliffe, this well-presented 2-bedroom end-of-terrace property offers an excellent investment opportunity for landlords looking to expand their portfolio.

Perfect for a first time buyer or an investor with a potential income of £750pcm.

The property features a bright and spacious living area, a modern fitted kitchen with ample storage, and two generously sized bedrooms, complemented by a family bathroom. Outside, the home benefits from a low-maintenance rear yard and on-street parking. Its position as an end-terrace ensures added privacy and light throughout the home.

Conveniently located close to local amenities, schools, and transport links, this property combines comfort with practicality, making it highly appealing to tenants and investors alike.

Don't miss out on this ready-made investment opportunity in a sought-after Radcliffe location!



Pre-auction sales are invited

Sold on an unconditional basis, purchasers considering alternative uses or even development are deemed to rely upon their own enquiries.

Every care has been taken with the preparation of these Particulars but complete accuracy cannot be guaranteed. If there is any point, which is of particular importance to you, please obtain professional confirmation.

75 Eton Hill Road

Approx. 872 square feet

Guide Price: £120,000

