



**198 Falside Crescent, Bathgate**

RE/MAX Select - *By Niall McCabe*

Offers Over **£160,000**





## 198 Falside Crescent

Bathgate

Niall McCabe & RE/MAX Select Bathgate are delighted to present to the market this exceptional end-terraced family home, perfectly positioned on the sought-after Falside Crescent in Bathgate. Exuding style and sophistication throughout, the property showcases breathtaking interiors, a striking semi open-plan design, and generously proportioned living spaces. Finished to an impeccable standard and flawlessly styled, this residence stands as a true testament to the care and vision of its current owners.

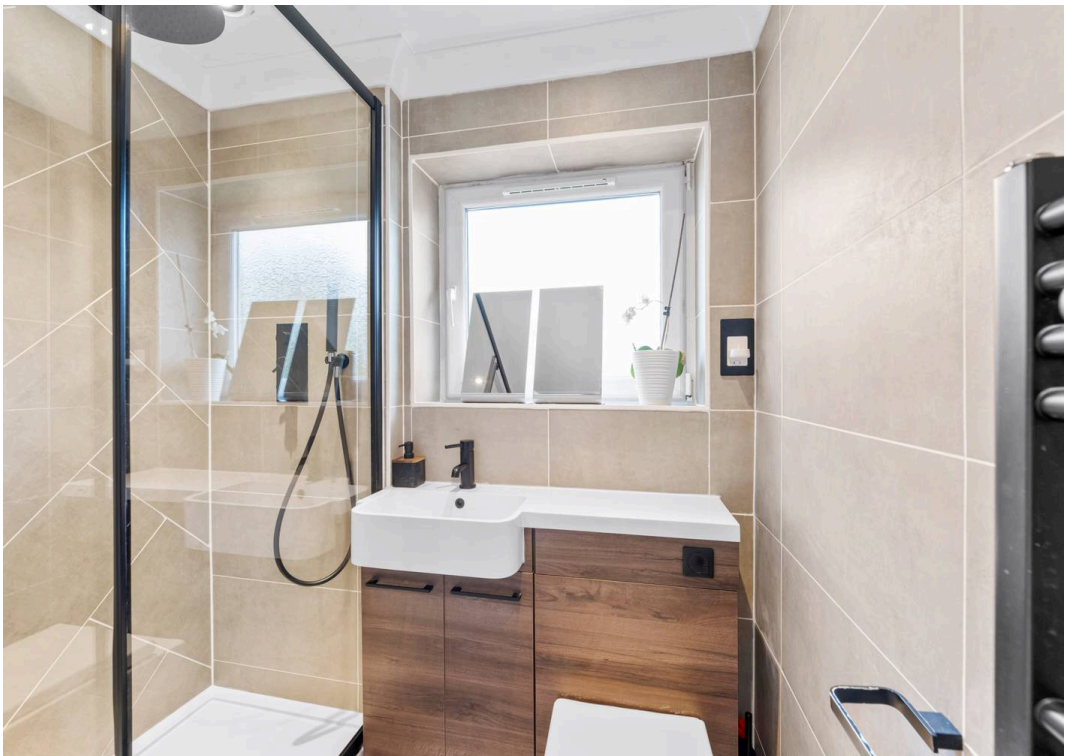
Council Tax band: B

Tenure: Freehold

EPC Energy Efficiency Rating: D

EPC Environmental Impact Rating: D

- Delightful End-Terrace Home
- 2 Sizeable Bedrooms
- Chic Lounge/Diner
- Modern Kitchen
- Bespoke Shower Room
- Large Gardens, Detached Garage & Off-Street Parking







**REMAX SELECT**

6 Whitburn Road, Bathgate - EH48 1HH

01506 532684 • [bathgate@remax-scotland.homes](mailto:bathgate@remax-scotland.homes) •