

Buy. Sell. Rent. Let.



Nelthorpe Street, Lincoln



4



2



1

When it comes to
property it must be


lovelle



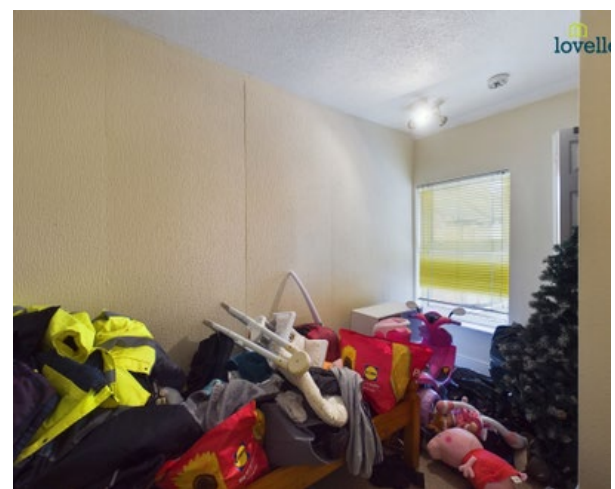
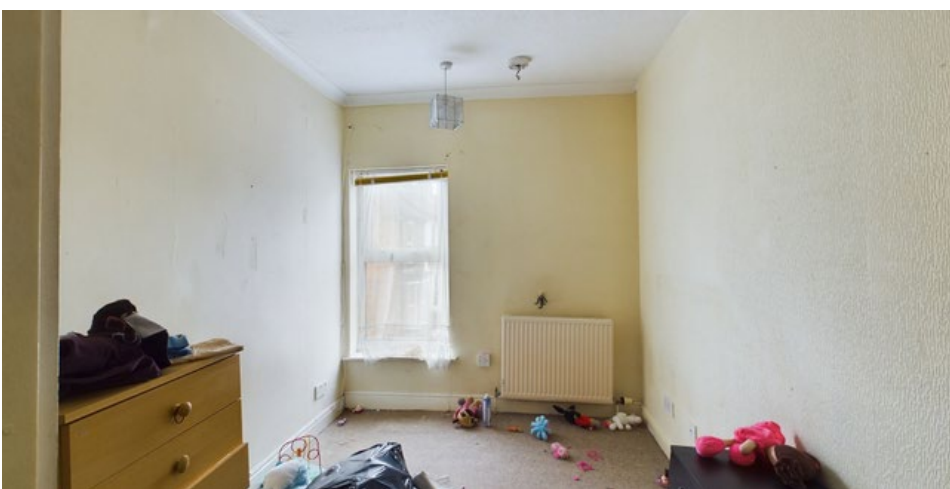
£159,950

 4
  2
  1

VICTORIAN BAY FRONTED TERRACED HOUSE in the Heart of Lincoln. Spacious & Flexible accommodation, comprising hall, lounge, dining room, kitchen, shower room, 4 bedrooms and 2 bathrooms. Courtyard garden to rear. VIEWING ADVISED

Key Features

- Victorian Terraced House
- City Centre Location
- Spacious & Flexible Accommodation
- Hall, Lounge, Dining Room, Kitchen
- 4 Bedrooms, 2 Bathrooms
- Courtyard Garden
- EPC rating E
- Tenure: Freehold





Welcome to Nelthorpe Street, a charming 3-story property situated in the heart of Lincoln, England. With a total area of 1112 square feet, this house brings together space and comfort, featuring 4 generous bedrooms and 2 well-appointed bathrooms. On the ground floor, you will find a lounge, a cosy dining room boasting a hearty fireplace, a user-friendly kitchen equipped with a stove, and a convenient bathroom with a shower. The first floor houses an additional bedroom, inconspicuously separated by four other rooms for privacy and an opulent bathroom complete with a bath. The second floor is dedicated to the last bedroom, providing peace and seclusion. This property is ideal for those who appreciate traditional charm combined with a family-friendly layout, making it perfect for families or professionals alike in the heart of Lincoln

Lounge

4.39m x 3.62m (14'5" x 11'11")

Dining Room

4.98m x 3.63m (16'4" x 11'11")

Kitchen

6.69m x 2.25m (21'11" x 7'5")

Shower Room

1.52m x 2.21m (5'0" x 7'4")

Bedroom 2

3.65m x 1.94m (12'0" x 6'5")

Bedroom 3

3.64m x 2.28m (11'11" x 7'6")

Bedroom 4

3.12m x 2.12m (10'2" x 7'0")

Bathroom

3.09m x 2.06m (10'1" x 6'10")

Bedroom 1

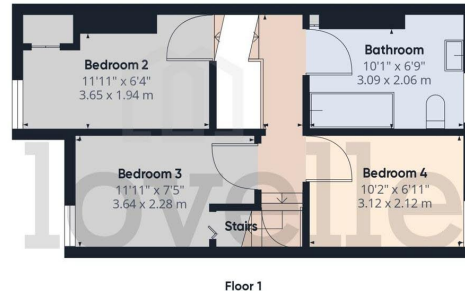
5.06m x 4.05m (16'7" x 13'4")

Agents Notes

These particulars are for guidance only. Lovelle Estate Agency, their clients and any joint agents give notice that:- They have no authority to give or make representation/warranties regarding the property, or comment on the SERVICES, TENURE and RIGHT OF WAY of any property.

These particulars do not form part of any contract and must not be relied upon as statements or representation of fact. All measurements/areas are approximate. The particulars including photographs and plans are for guidance only and are not necessarily comprehensive.





Approximate total area⁽¹⁾
1112.45 ft²
103.35 m²

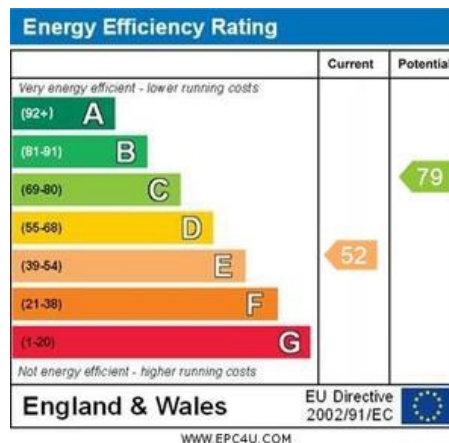
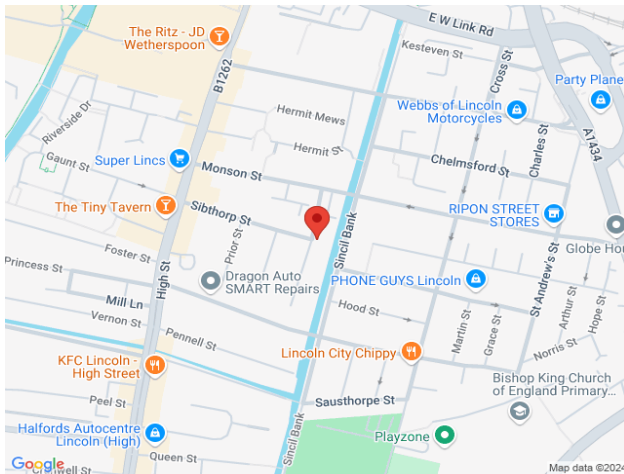
Reduced headroom
88.41 ft²
8.21 m²

(1) Excluding balconies and terraces

Reduced headroom
..... Below 5 ft/1.5 m

While every attempt has been made to ensure accuracy, all measurements are approximate, not to scale. This floor plan is for illustrative purposes only.

Calculations are based on RICS IPMS 3C standard.



When it comes to **property**
it must be



01673 844069

marktrassen@lovelle.co.uk