

Buy. Sell. Rent. Let.

lovelle

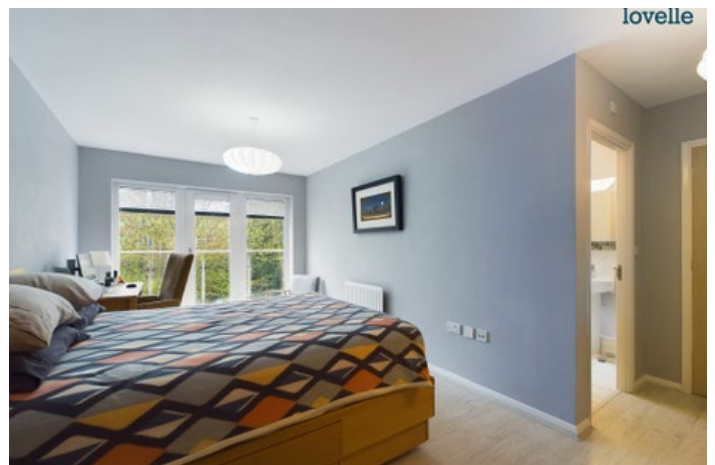


77 Manton Road, Lincoln LN2 2JL



When it comes to
property it must be


lovelle



Asking Price - £220,000



Beautifully presented two-bedroom apartment in secure gated community. Ideal location, close to amenities in Lincoln's uphill area. *CLICK ON OUR INTERACTIVE VIRTUAL 360 TOUR*

Key Features

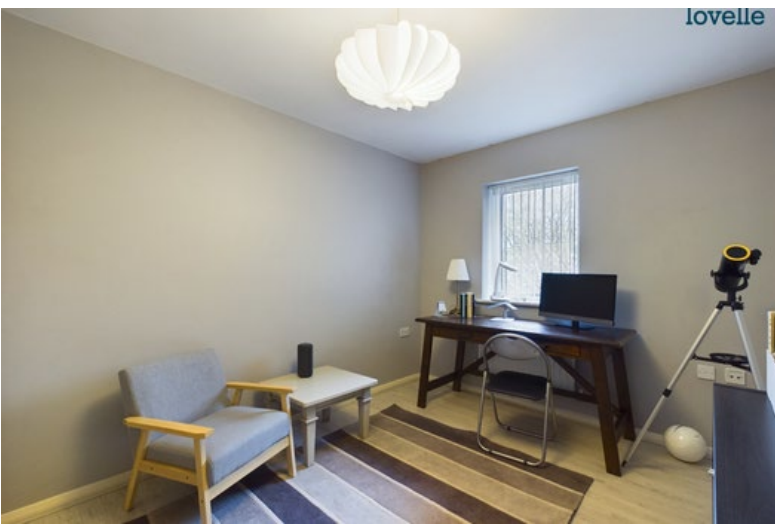
- 2-bedroom apartment
- Secure gated community
- Popular uphill area of Lincoln
- Close to Amenities
- GARAGE
- Two double bedrooms, one with an en-suite bathroom
- EPC rating B
- Tenure: Leasehold
- Council Tax Band : D



lovelle



lovelle



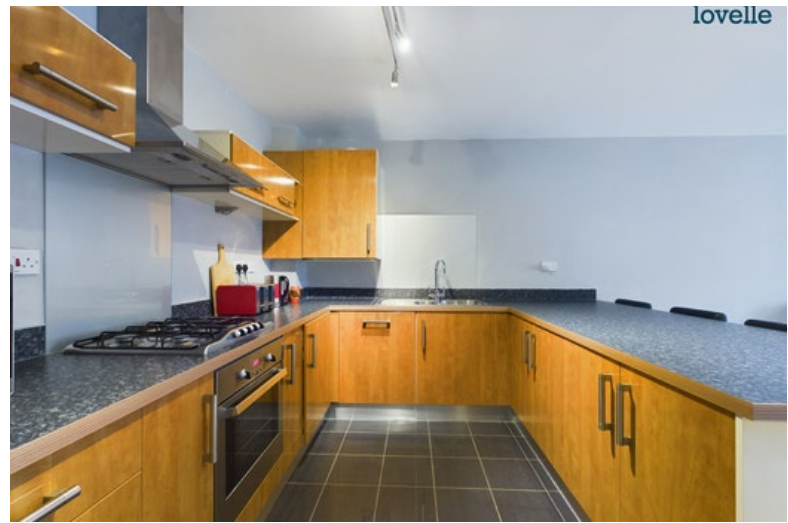
lovelle



lovelle



lovelle



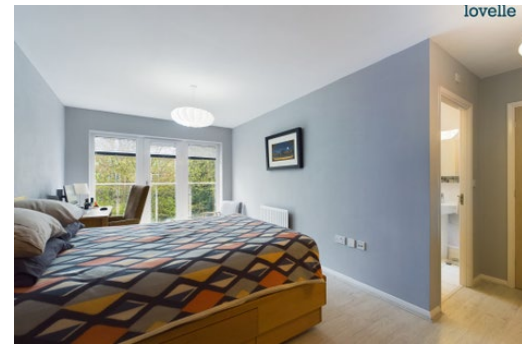
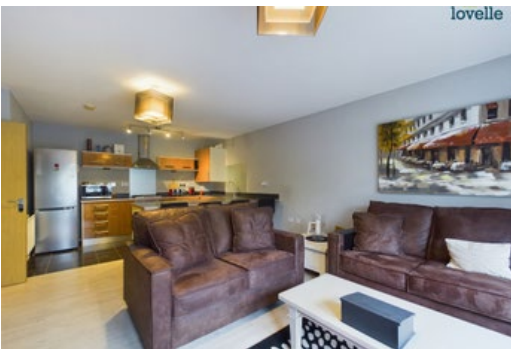
lovelle



lovelle



lovelle



Introducing a stunning 2-bedroom apartment nestled within the gated community on Manton Road, promising unparalleled security and tranquility. This residence offers an array of features tailored for comfortable living:

Step into a welcoming open-plan kitchen and living area, seamlessly extending onto a charming balcony, perfect for unwinding or enjoying your morning cup of coffee. The apartment boasts two generously sized double bedrooms, one with the added luxury of an en-suite bathroom, while a second bathroom caters to guests and the additional bedroom.

Located in the highly sought-after uphill area of Lincoln, this apartment offers convenience. Enjoy being just moments away from an abundance of amenities, including restaurants, shops, and the university.

In essence, this residence presents an opportunity for secure and comfortable living in a prime location. Don't miss out - contact us today to schedule a viewing.

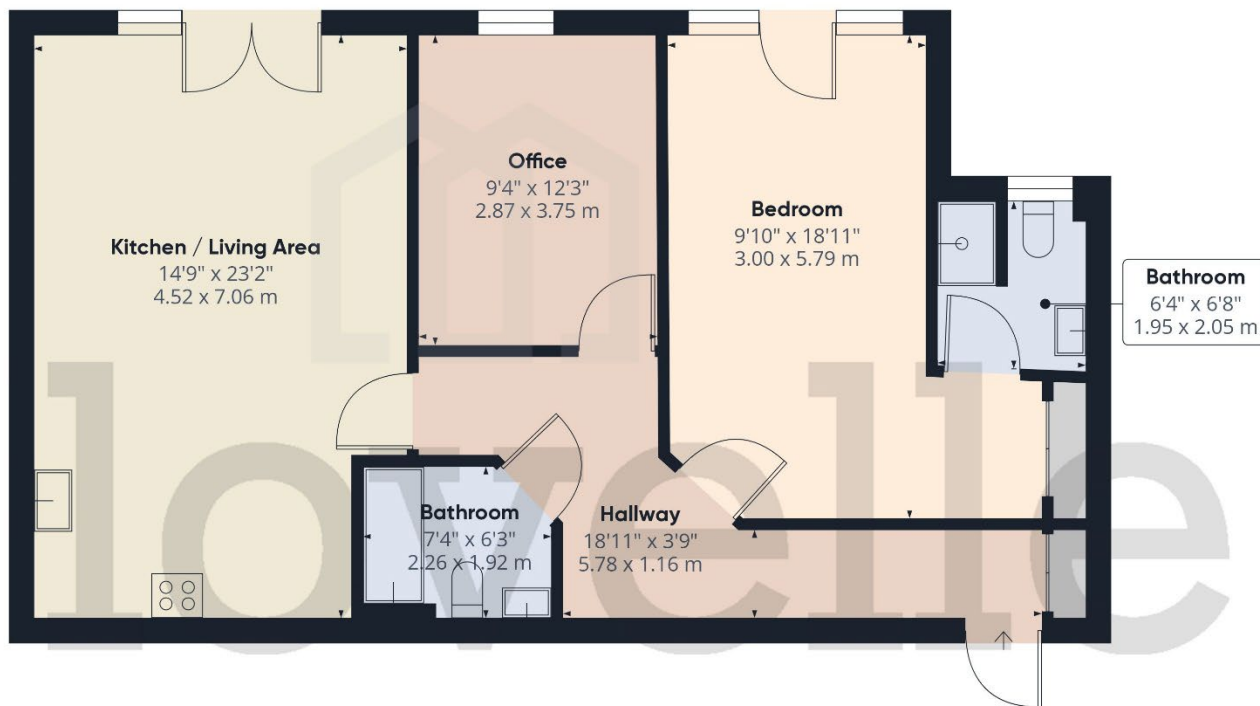
Agent Notes

These particulars are for guidance only. Lovelle Estate Agency, their clients and any joint agents give notice that:-

They have no authority to give or make representation/warranties regarding the property, or comment on the SERVICES, TENURE and RIGHT OF WAY of any property.

These particulars do not form part of any contract and must not be relied upon as statements or representation of fact.

All measurements/areas are approximate. The particulars including photographs and plans are for guidance only and are not necessarily comprehensive.



Approximate total area⁽¹⁾

895.24 ft²

83.17 m²

(1) Excluding balconies and terraces

While every attempt has been made to ensure accuracy, all measurements are approximate, not to scale. This floor plan is for illustrative purposes only.

GIRAFFE360

When it comes to **property**
it must be



01522 305605

lincoln@lovelle.co.uk