

Buy. Sell. Rent. Let.

lovelle



23 Cheviot Street, Lincoln LN2 5JD



3



1



2

When it comes to
property it must be


lovelle



Asking Price - £180,000



Charming 3-bed terrace in Lincoln with cosy living spaces, a courtyard garden, and proximity to amenities—ideal for convenient, comfortable living. *CLICK ON OUR INTERACTIVE VIRTUAL 360 TOUR*

Key Features

- 3-bed terraced home
- Cosy lounge, elegant dining room, and practical galley kitchen
- Charming rear courtyard garden
- Close proximity to local amenities, schools, and recreational facilities
- Tenure : Freehold
- EPC Rating : D
- Council Tax Band : A



Inviting 3-Bedroom Terraced Home in Lincoln

Discover comfort in this charming 3-bedroom terraced home on Cheviot Street, Lincoln. The ground floor features a cosy lounge, an elegant dining room, and a practical galley kitchen - perfect for family gatherings. Upstairs, a well-appointed bathroom and three comfortable bedrooms await.

Step outside to the rear courtyard garden, offering a private outdoor space. The property's proximity to local amenities ensures easy access to daily essentials and schools. Cheviot Street strikes the ideal balance between a peaceful residential setting and urban convenience.

Agent Notes

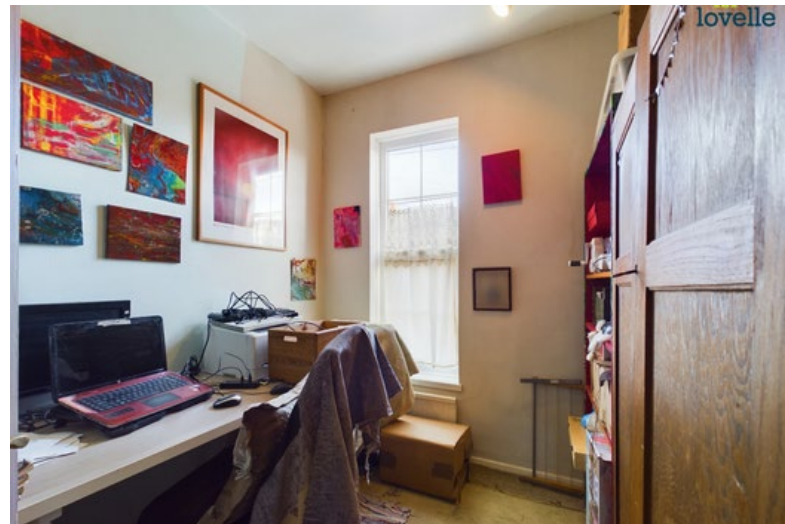
0.00m x 0.00m (0'0" x 0'0")

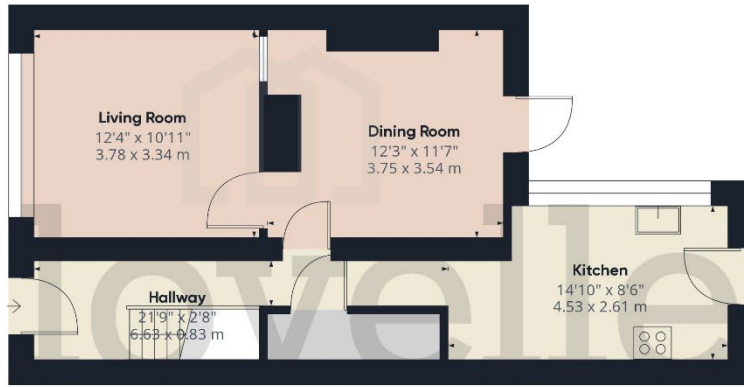
These particulars are for guidance only. Lovelle Estate Agency, their clients and any joint agents give notice that:-

They have no authority to give or make representation/warranties regarding the property, or comment on the SERVICES, TENURE and RIGHT OF WAY of any property.

These particulars do not form part of any contract and must not be relied upon as statements or representation of fact.

All measurements/areas are approximate. The particulars including photographs and plans are for guidance only and are not necessarily comprehensive.





Ground Floor



Floor 1

Approximate total area[®]

949.93 ft²
88.25 m²

Excluding balconies and terraces

While every attempt has been made to ensure accuracy, all measurements are approximate, not to scale. This floor plan is for illustrative purposes only.

GIRAFFE360



When it comes to **property**
it must be



01522 305605

lincoln@lovelle.co.uk