



851a Wolsley Road | Saltash Passage | PL5 1JR

In Excess Of 190,000

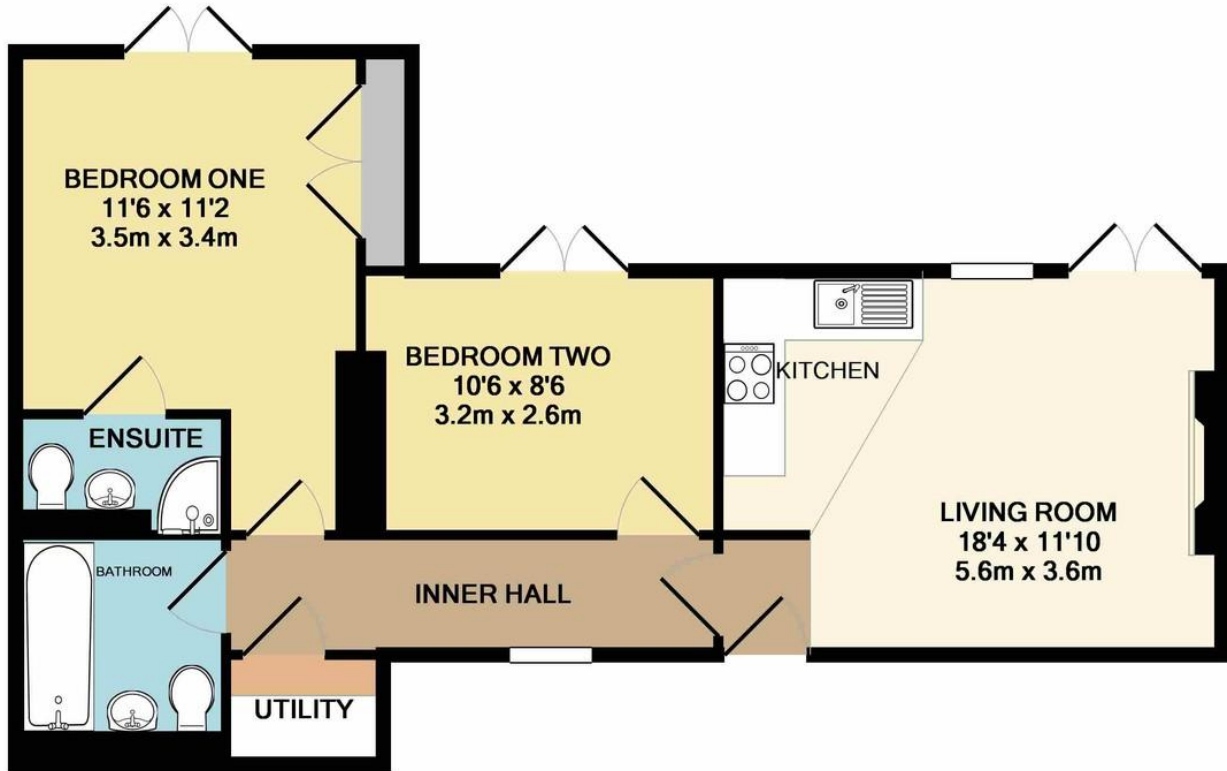
A two double bedroom waterside maisonette.

This garden apartment offers modern open plan living with a generous patio and garden area, backing onto The River Tamar.

Upon inspection you will find an entrance hall, open plan living kitchen with French Windows to the rear garden. Two bedrooms, the master having an en-suite and family bathroom.

Outside there is a generous patio and garden area, offering water views and wooded backdrop.

- Waterside Apartment
- Two Bedrooms
- Open Plan Living Room
- Two Bathrooms
- Upvc Double Glazing
- Gas Central Heating
- Spacious Garden with water views.

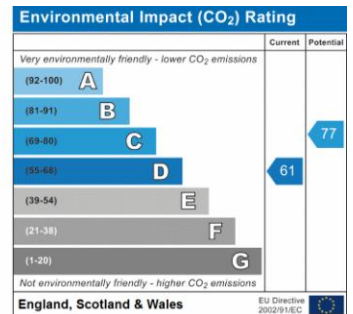
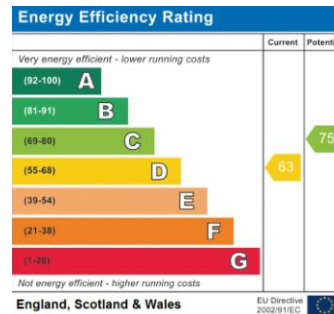


Whilst every attempt has been made to ensure the accuracy of the floor plan contained here, measurements of doors, windows, rooms and any other items are approximate and no responsibility is taken for any error, omission, or mis-statement. This plan is for illustrative purposes only and should be used as such by any prospective purchaser. The services, systems and appliances shown have not been tested and no guarantee as to their operability or efficiency can be given
 Made with Metropix ©2019

Contact Details

48 Ebrington Street
 Plymouth
 Devon
 PL4 9AD

www.athomelettings.com
 info@athomeproperty.co.uk
 01752 777070



Agents Note: Whilst every care has been taken to prepare these sales particulars, they are for guidance purposes only. All measurements are approximate are for general guidance purposes only and whilst every care has been taken to ensure their accuracy, they should not be relied upon and potential buyers are advised to recheck the measurements