



45 Whitsand Bay Fort | Whitsand Bay | Torpoint | PL10 1JZ Asking Price Of £165,000

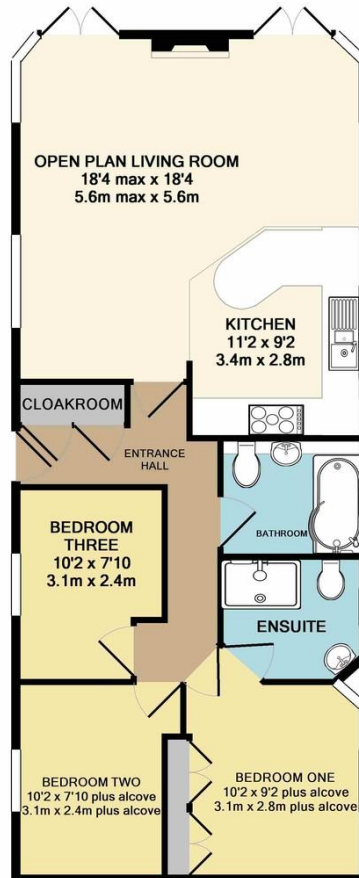
A detached holiday lodge situated within Whitsand Bay.

This well presented three three bedroomed cedar wood lodge benefits from Upvc double glazing, LPG central heating, balcony with hot tub and far reaching countryside and water views.

Upon inspection, you will find an entrance hall, large opening plan living, dining, kitchen area, three bedrooms, the master with en-suite shower room and a family bathroom.

The park also boasts, swimming pool, café, bar / restaurant, recreational walks and sit within a short walk to the outstanding beaches of Whitsand Bay.

- Detached Holiday Lodge
- Three Bedrooms
- Open Plan Living Room
- Far Reaching Views
- Balcony With Hot Tub



TOTAL APPROX. FLOOR AREA 819 SQ.FT. (76.1 SQ.M.)

Whilst every attempt has been made to ensure the accuracy of the floor plan contained here, measurements of doors, windows, rooms and any other items are approximate and no responsibility is taken for any error, omission, or mis-statement. This plan is for illustrative purposes only and should be used as such by any prospective purchaser. The services, systems and appliances shown have not been tested and no guarantee as to their operability or efficiency can be given
Made with Metropix ©2019

Contact Details

48 Ebrington Street
Plymouth
Devon
PL4 9AD

www.athomelettings.com
info@athomeproperty.co.uk
01752 777070



Agents Note: Whilst every care has been taken to prepare these sales particulars, they are for guidance purposes only. All measurements are approximate are for general guidance purposes only and whilst every care has been taken to ensure their accuracy, they should not be relied upon and potential buyers are advised to recheck the measurements