



20 Fairview Avenue | Crabtree | Plymouth | PL3 6DR

Guide £380,000-£400,000

A stunning semi detached home offering far reaching water and countryside views.

This four double bedroom property, benefits from open plan modern living on the ground floor with underfloor heating, modern fitted kitchen, downstairs WC and bright spacious accommodation.

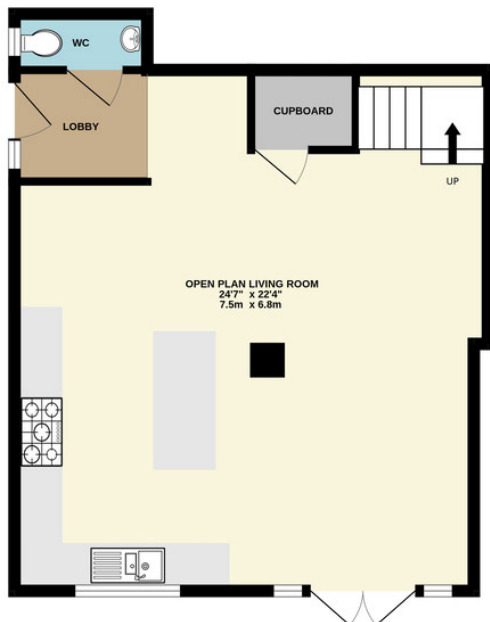
The first floor offers a landing, four double bedrooms (master en-suite), family bathroom and stunning views to the rear.

Outside is an elevated balcony to the rear, enjoying a Southerly aspect and interrupted views, descending onto a lower garden area, laid to astro turf, whilst the front offers a resin hardstand, The recently refurbished property needs to be seen to fully appreciated.

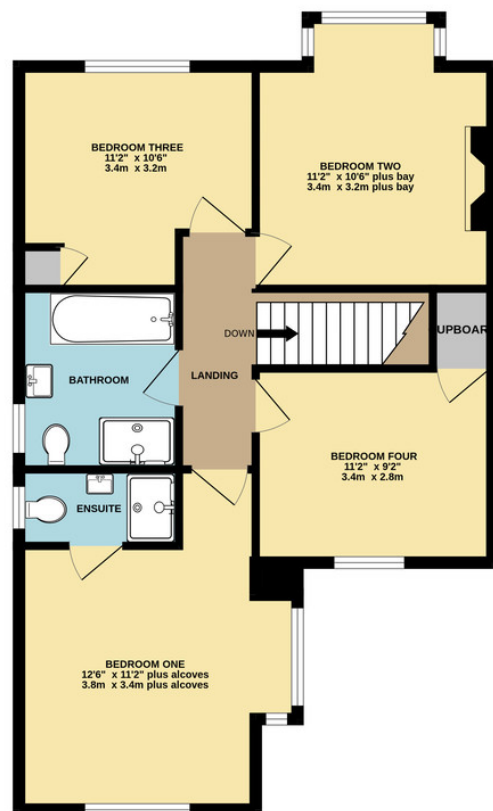
- Semi Detached Home
- Four Double Bedrooms
- Far Reaching Water Views
- Open Plan Living Kitchen
- Recently Refurbished
- Two Bathrooms
- Three WC's
- Popular Location



GROUND FLOOR
555 sq.ft. (51.6 sq.m.) approx.



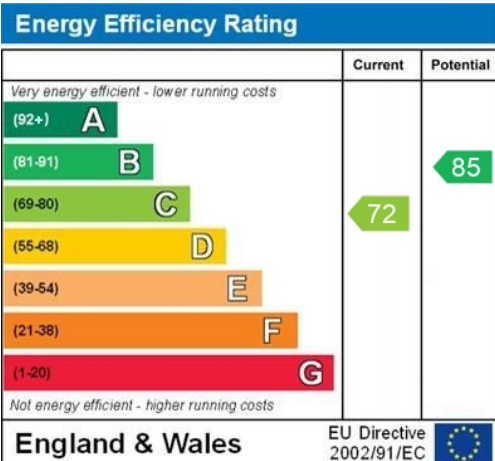
1ST FLOOR
674 sq.ft. (62.6 sq.m.) approx.



Contact Details

48 Ebrington Street
Plymouth
Devon
PL4 9AD

www.athomelettings.com
info@athomeproperty.co.uk
01752 777070



Agents Note: Whilst every care has been taken to prepare these sales particulars, they are for guidance purposes only. All measurements are approximate and for general guidance purposes only and whilst every care has been taken to ensure their accuracy, they should not be relied upon and potential buyers are advised to recheck the measurements