



192 Pasley Street | Stoke | Plymouth | PL2 1DT

In Region Of £220,000

A spacious three double bedroom Victorian Town House.

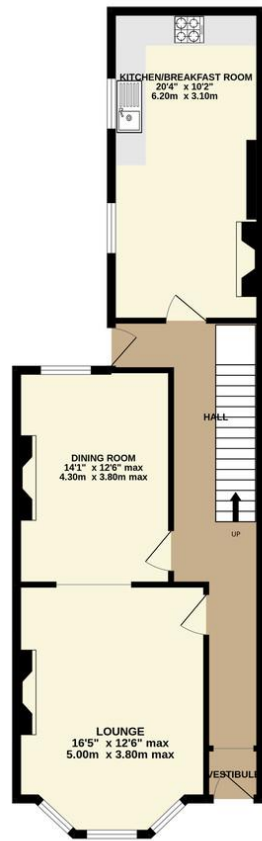
This bay fronted period property retains much character and charm boasting ornate coving and ceiling roses, mouldings and corbels. Upon inspection you will find an entrance vestibule, entrance hall, lounge with adjoining dining room, generous kitchen breakfast room on the ground floor. The first floor offers three double bedrooms and family bathroom. we are informed there is ongoing planning consent for a loft conversion with work already having been started. This property has huge potential.

- Period Town House
- Three Double Bedrooms
- Potential Fourth Bedroom
- Upvc Double Glazed Windows
- Gas Central Heating
- Many Period Features
- Loft Conversion Started



GROUND FLOOR
684 sq.ft. (63.5 sq.m.) approx.

1ST FLOOR
692 sq.ft. (64.3 sq.m.) approx.



Contact Details

48 Ebrington Street
Plymouth
Devon
PL4 9AD

www.athomelettings.com
info@athomeproperty.co.uk
01752 777070

Energy Efficiency Rating

	Current	Potential
Very energy efficient - lower running costs		
(92+) A		
(81-91) B		85
(69-80) C		
(55-68) D	65	
(39-54) E		
(21-38) F		
(1-20) G		
Not energy efficient - higher running costs		
England & Wales	EU Directive 2002/91/EC	

WWW.EPC4U.COM

Agents Note: Whilst every care has been taken to prepare these sales particulars, they are for guidance purposes only. All measurements are approximate are for general guidance purposes only and whilst every care has been taken to ensure their accuracy, they should not be relied upon and potential buyers are advised to recheck the measurements