



2 Paradise Place | Stoke | Plymouth | PL1 5QU

Guide £250,000-£260,000

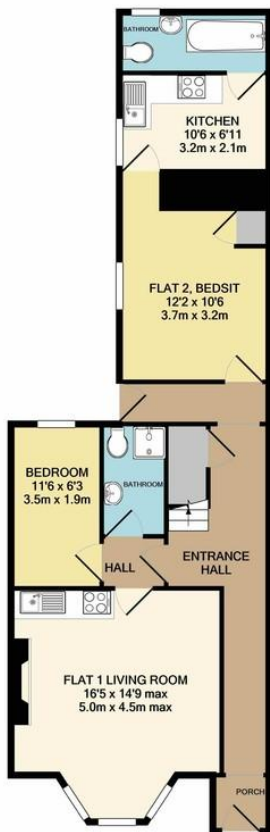
A large four story town house situated within a popular area.

This period property currently comprises six self contained flats / bedsits. Whilst the property needs some modernisation it benefits from Upvc double glazed windows, garden and double garage.

Upon inspection you will find a one bedroom flat and studio on the ground floor, the same on the first floor and a self contained flat on the second floor and a loft flat on the third floor.

The property is ideally placed for Devonport Dockyard, University College, Stoke Train Station and The City Centre. The property currently produces £26,100 pa which equates to 10.4%

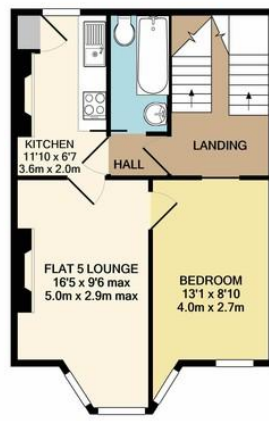
- Investment Property
- Six Units
- Upvc Double Glazed Windows
- Double Garage
- Proven Rental Income
- Close To University College
- Close To Train Station
- Close To Dockyard



GROUND FLOOR
APPROX. FLOOR
AREA 765 SQ.FT.
(71.1 SQ.M.)



1ST FLOOR
APPROX. FLOOR
AREA 643 SQ.FT.
(59.8 SQ.M.)



2ND FLOOR
APPROX. FLOOR
AREA 467 SQ.FT.
(43.3 SQ.M.)



3RD FLOOR
APPROX. FLOOR
AREA 446 SQ.FT.
(41.4 SQ.M.)

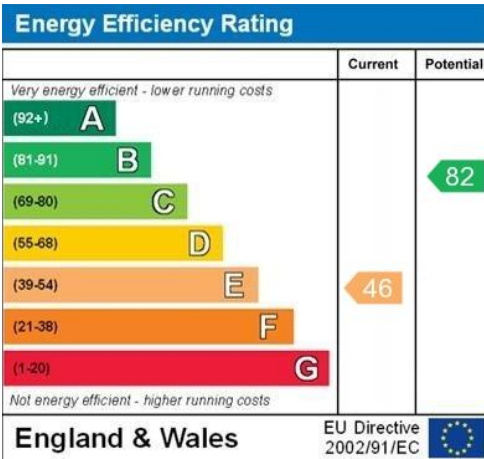
TOTAL APPROX. FLOOR AREA 2321 SQ.FT. (215.6 SQ.M.)

Whilst every attempt has been made to ensure the accuracy of the floor plan contained here, measurements of doors, windows, rooms and any other items are approximate and no responsibility is taken for any error, omission, or mis-statement. This plan is for illustrative purposes only and should be used as such by any prospective purchaser. The services, systems and appliances shown have not been tested and no guarantee as to their operability or efficiency can be given.
Made with Metropix ©2021

Contact Details

48 Ebrington Street
Plymouth
Devon
PL4 9AD

www.athomelettings.com
info@athomeproperty.co.uk
01752 777070



Agents Note: Whilst every care has been taken to prepare these sales particulars, they are for guidance purposes only. All measurements are approximate are for general guidance purposes only and whilst every care has been taken to ensure their accuracy, they should not be relied upon and potential buyers are advised to recheck the measurements