



28, Longfellow Crescent, Royal Wootton Bassett, SN4 8JU

Guide Price £230,000

richard james

Village & Country Homes

richard
james



richard
james



richard

Longfellow Crescent

Royal Wootton Bassett

Freehold



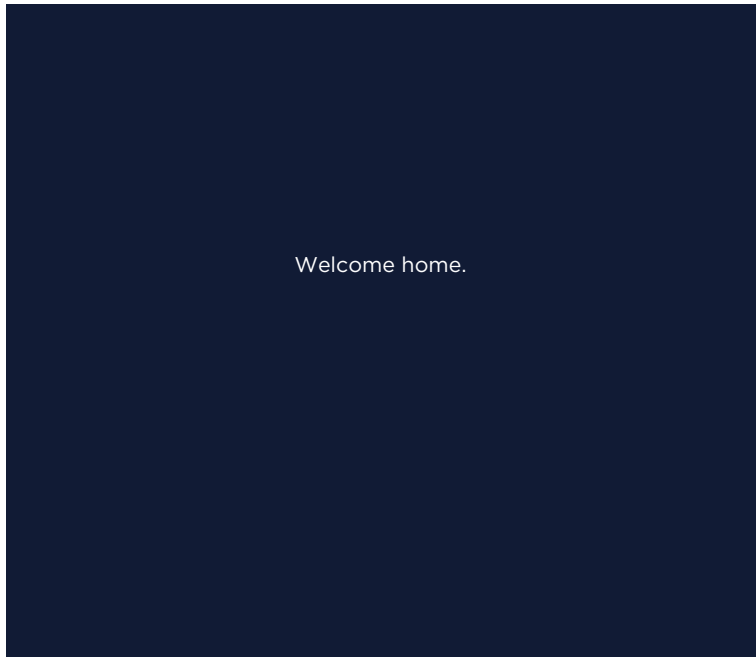
Located in the highly sought-after area of Royal Wootton Bassett, this well-presented two-bedroom home is just a short distance from local amenities, reputable schools, and excellent transport links. The accommodation comprises an inviting entrance hall, a modern kitchen, and a spacious living room with a door leading out to a generous private garden, offering an ideal space for relaxation or entertaining.

Upstairs, there is a comfortable double bedroom and a good-sized single bedroom, both served by a stylish family bathroom complete with both a bath and a separate shower. The property also benefits from an allocated parking space and well-maintained front and rear gardens, offering potential for future development.

The vendors previously obtained planning permission for a two-storey rear extension extending 4 metres, which has since lapsed.

Offered with no onward chain, this property presents an excellent opportunity for first-time buyers or investors, combining convenience, comfort, and future potential. Early viewing is highly recommended to fully appreciate all that this charming home has to offer.

Welcome Home...





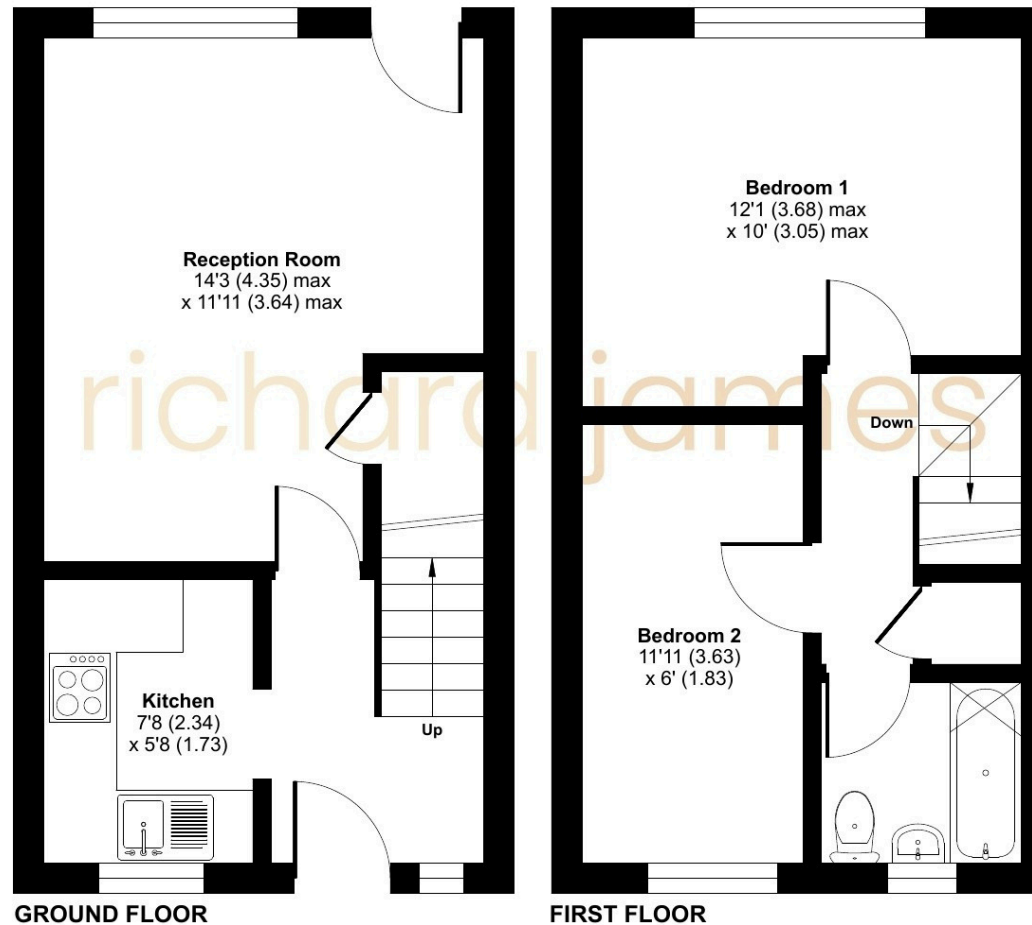




Floorplan

Approximate Area = 536 sq ft / 49.7 sq m

For identification only - Not to scale



 Floor plan produced in accordance with RICS Property Measurement 2nd Edition, Incorporating International Property Measurement Standards (IPMS2 Residential). © nichecom 2025. Produced for Richard James Estate Agents Ltd. REF: 1335232

01793 855 117

rwb@richardjames.uk

139 High Street | Royal Wootton Bassett | SN4 7AY

richard james

richardjames.uk